

Development WA
Bushfire Attack Level (BAL) Assessment Report
Various lots, Stages 15-19 Jindowie

8 September 2021
60921/140,452 (Rev 0)

JBS&G Australia Pty Ltd T/A Strategen-JBS&G

Table of Contents

1.	Introduction	1
1.1	Site/development summary	1
1.2	Purpose of report	1
2.	Bushfire assessment results	3
2.1	Assessment inputs	3
2.1.1	Vegetation classification	3
2.1.2	Effective slope	3
2.1.3	Summary of inputs	3
2.2	Assessment outputs	6
2.2.1	Bushfire Attack Level (BAL) contour assessment	6
2.2.2	BAL certificates	7
3.	Conclusion and recommendations	9
4.	References	10
5.	Limitations	11

List of Tables

Table 1:	Site/development summary	1
Table 2:	Summary of vegetation classifications, exclusions and effective slope	4
Table 3:	BAL contour assessment results	6

List of Figures

Figure 1:	Vegetation classification and effective slope	5
Figure 2:	BAL contour map	8

Appendices

- Appendix A BAL certificates
- Appendix B POS landscape plan
- Appendix C Vegetation plot photos and description

1. Introduction

1.1 Site/development summary

Table 1 provides a summary of the site and proposed development. The development layout and subject lots are shown in Figure 1 and Figure 2.

Table 1: Site/development summary

Site details	
Address details	55 residential lots within Stages 15–19 Jindowie, Yanchep, WA 6035
Local government area	City of Wanneroo
Description of building works	Construction of a single residential dwelling (Class 1a building and associated Class 10a building/s) within each lot

1.2 Purpose of report

This Bushfire Attack Level (BAL) assessment report has been prepared for 55 residential lots within Stages 15–19 Jindowie, Yanchep (hereafter referred to as the project area). This report provides a post-subdivisional works update of the Bushfire Attack Level (BAL) ratings for individual lots within the project area and has been prepared for the benefit of the developer, future lot purchasers and decision makers. BAL certificates for each individual lot situated within a designated bushfire prone area (contained in Appendix A) have been prepared based on detailed site inspection and are appended to this report for use at the building permit stage.

The majority of the project area is designated as bushfire prone on the *Map of Bush Fire Prone Areas* (DFES 2019, see Plate 1), such that 51 out of the 55 lots within the project area are affected. As such, bushfire management consideration and BAL assessment is required for the 51 lots situated within a designated bushfire prone area to facilitate future lot sale and building permit applications.



Plate 1: Map of Bush Fire Prone Areas (DFES 2019)

2. Bushfire assessment results

2.1 Assessment inputs

2.1.1 Vegetation classification

Strategen-JBS&G assessed classified vegetation and exclusions within the 150 m assessment area through on-ground verification on 5 August 2021 in accordance with AS 3959—2018 *Construction of Buildings in Bushfire-Prone Areas* (AS 3959; SA 2018) and the *Visual Guide for Bushfire Risk Assessment in Western Australia* (DoP 2016). Georeferenced site photos and a description of the vegetation classifications and exclusions are contained in Appendix C and depicted in Figure 1, with a summary provided in Table 2.

Site observations indicate that the following plots of classified vegetation exist within the 150 m of land surrounding the project area:

- Class B woodland to the north of the project area consisting of eucalypts with a grassy understorey and lack of shrubby middle layer
- Class D scrub to the south, southwest and northwest of the project area consisting of melaleuca with acacia and sparse sheoak. The majority of this plot is scrub regrowth which, at maturity, will have a continuous horizontal fuel profile of between 2–6 m in height.
- Class C shrubland to the south and northwest of the project area consisting of shrubs less than 2 m high; greater than 30% foliage cover with an understory that may contain grasses.

Areas within the 150 m assessment area that are excluded from classification include the following:

- existing non-vegetated areas (i.e. footpaths, buildings, roads, water bodies, playgrounds and driveways) excluded under Clause 2.2.3.2 (e)
- existing low threat managed vegetation (i.e. manicured lawns, street trees, mulched verges, cleared vacant lots, managed gardens and ground cover verge planting) excluded under Clause 2.2.3.2 (f)
- single area of vegetation within the central POS cell that is less than 1 ha in area and not within 100 m of other areas of vegetation being classified vegetation excluded, under Clause 2.2.3.2 (b).

POS areas within 150 m of the project area have been established as low threat either through construction and landscaping (i.e. central POS cell, refer to landscape plans in Appendix B) or through clearing and low threat maintenance in advance of formal construction and landscaping (southern POS cells).

2.1.2 Effective slope

Strategen-JBS&G assessed effective slope under classified vegetation within the 150 m assessment area through on-ground verification on 5 August 2021 in accordance with AS 3959. Results were cross-referenced with DPIRD 2 m contour data and are depicted in Figure 1, with a summary provided in Table 2.

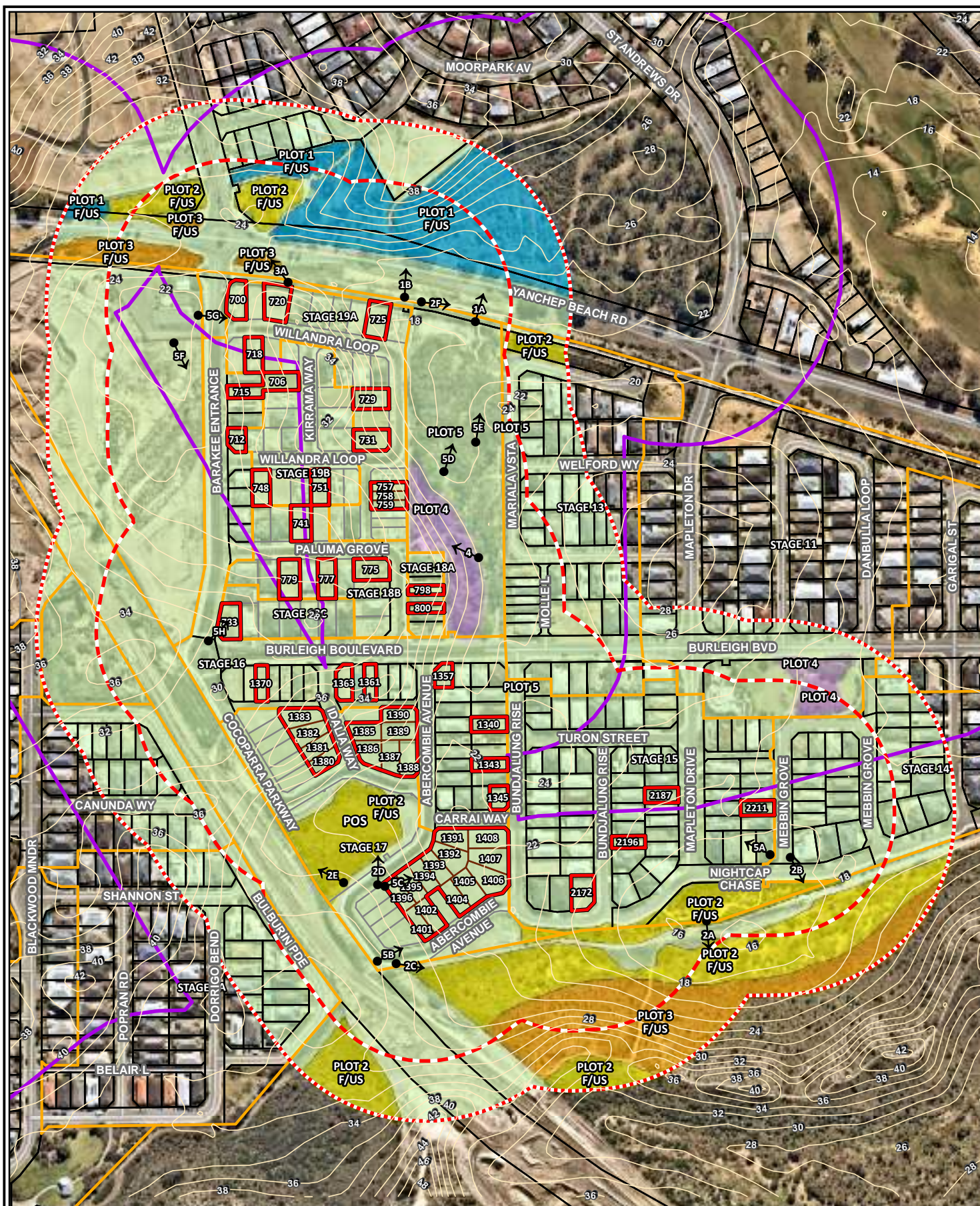
Site observations indicate that effective slope under classified vegetation is either flat or up-slope in relation to the project area (i.e. effective slope of 0 degrees).

2.1.3 Summary of inputs

Figure 1 illustrates the current vegetation classifications and exclusions and effective slopes observed during the site inspection. The vegetation classifications/exclusions and effective slope are summarised in Table 2.

Table 2: Summary of vegetation classifications, exclusions and effective slope

Vegetation plot	Vegetation classification	Effective slope	Comments
1	Class B Woodland	Flat/upslope (0°)	Woodland vegetation dominated by eucalypts with a grassy understorey and lack of shrubby middle layer.
2	Class D Scrub	Flat/upslope (0°)	Scrub vegetation dominated by melaleuca with acacia and sparse sheoak. The majority of this plot is scrub regrowth which, at maturity, will have a continuous horizontal fuel profile of between 2–6 m in height.
3	Class C Shrubland	Flat/upslope (0°)	Shrubs <2 m high; greater than 30% foliage cover. Understorey may contain grasses.
4	Excluded – Clause 2.2.3.2 [b]	N/A	Single areas of vegetation less than 1 ha in area and not within 100 m of other areas of vegetation being classified.
5	Excluded – Non-vegetated and Low threat (Clause 2.2.3.2 [e] and [f])	N/A	Existing non-vegetated areas (i.e. footpaths, buildings, roads, water bodies, playgrounds and driveways) and low threat managed vegetation (i.e. manicured lawns, street trees, mulched verges, cleared vacant lots, managed gardens and ground cover verge planting).



Legend

- Project area
- 100m assessment area
- 150m assessment area
- Cadastral boundary
- Bushfire prone areas
- Proposed lots
- Future indicative lot layout on adjacent stages
- Stage boundaries
- Vegetation classification
 - Class B Woodland
 - Class C Shrubland
 - Class D Scrub
 - Clause 2.2.3.2 (b)
 - Clause 2.2.3.2 (e) & (f)
- Photo point directions
- Topographic contours (mAHD)
- Roads (MRWA)

Scale 1:4,200 at A4

0 50 100
metres

Coord. Sys. GDA 1994 MGA Zone 50



Job No: 60921

Client: Development WA

Version: A

Drawn By: jcrute

Date: 31-Aug-2021

Checked By: CT

Various lots, Stages 15–19
Jindowie Estate, Yanchep, WA

VEGETATION CLASSIFICATION
AND EFFECTIVE SLOPE

FIGURE 1



2.2 Assessment outputs

2.2.1 Bushfire Attack Level (BAL) contour assessment

Strategen-JBS&G has undertaken a BAL contour assessment in accordance with Method 1 of AS 3959 for the project area (Figure 2). The Method 1 procedure incorporates the following factors:

- state-adopted FDI 80 rating
- vegetation classification
- effective slope
- distance maintained between proposed development areas and the classified vegetation.

The BAL contours are based on the current on-ground site conditions. Results of the BAL contour assessment are detailed in Table 3 and illustrated in Figure 2.

Table 3: BAL contour assessment results

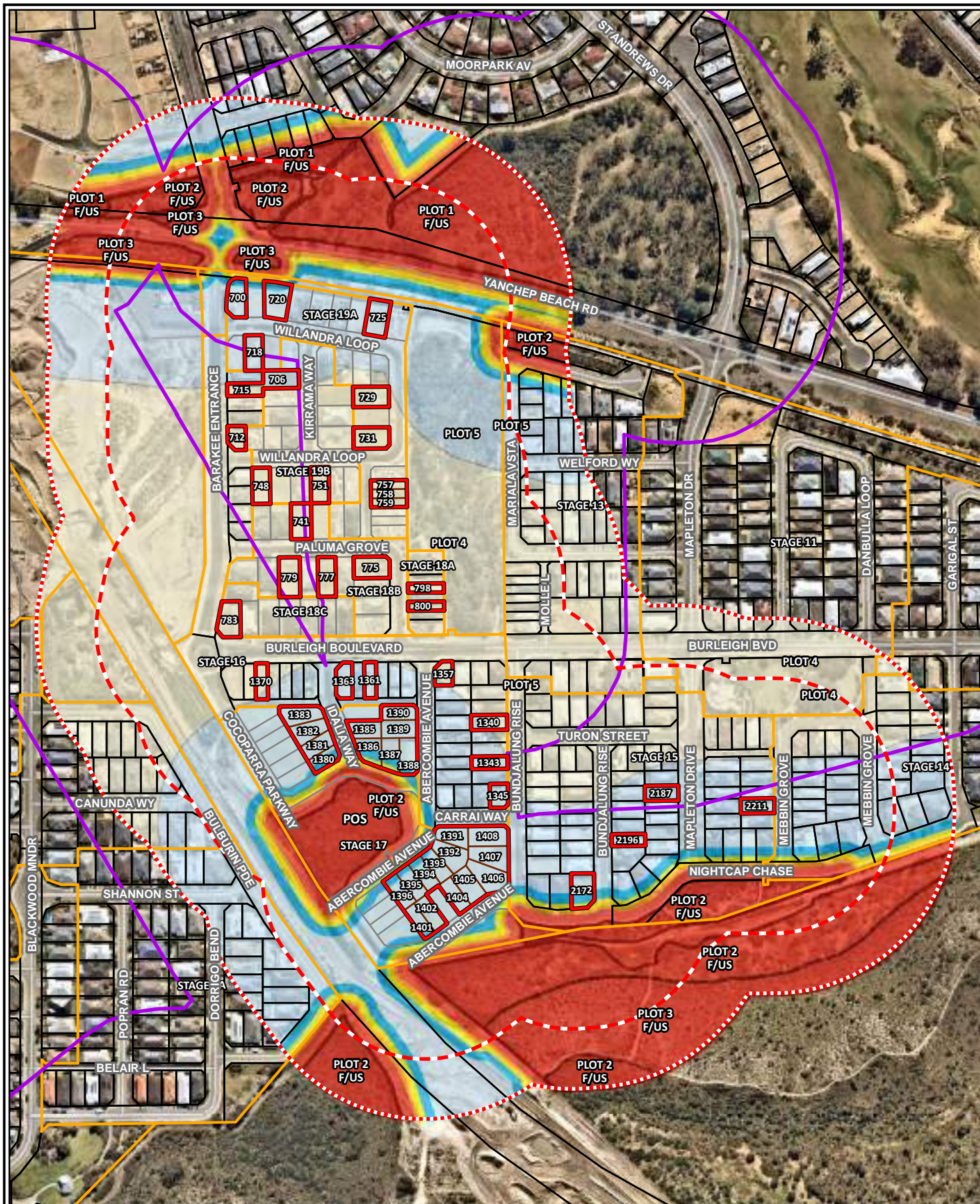
Method 1 BAL determination								
Lot	Designated bushfire prone	Vegetation plot	Vegetation classification	Effective slope	Separation distance	Highest BAL	Building setback to achieve lower BAL	Reduced BAL*
700	Yes	3	Class C Shrubland	Flat/upslope (0°)	13m	BAL-19	6m rear setback	BAL-12.5
706		3	Class C Shrubland	Flat/upslope (0°)	87m	BAL-12.5	N/A	N/A
712	No	N/A	N/A	N/A	N/A	N/A	N/A	N/A
715		N/A	N/A	N/A	N/A	N/A	N/A	N/A
718	Yes	3	Class C Shrubland	Flat/upslope (0°)	59m	BAL-12.5	N/A	N/A
720		3	Class C Shrubland	Flat/upslope (0°)	13m	BAL-19	6m truncated rear setback	BAL-12.5
725		1	Class B Woodland	Flat/upslope (0°)	41m	BAL-12.5	N/A	N/A
729		2	Class D Scrub	Flat/upslope (0°)	>100m	BAL-Low	N/A	N/A
731		2	Class D Scrub	Flat/upslope (0°)	>100m	BAL-Low	N/A	N/A
741		2	Class D Scrub	Flat/upslope (0°)	>100m	BAL-Low	N/A	N/A
748	No	N/A	N/A	N/A	N/A	N/A	N/A	N/A
751	Yes	2	Class D Scrub	Flat/upslope (0°)	>100m	BAL-Low	N/A	N/A
757		2	Class D Scrub	Flat/upslope (0°)	>100m	BAL-Low	N/A	N/A
758		2	Class D Scrub	Flat/upslope (0°)	>100m	BAL-Low	N/A	N/A
759		2	Class D Scrub	Flat/upslope (0°)	>100m	BAL-Low	N/A	N/A
775		2	Class D Scrub	Flat/upslope (0°)	>100m	BAL-Low	N/A	N/A
777		2	Class D Scrub	Flat/upslope (0°)	>100m	BAL-Low	N/A	N/A
779		2	Class D Scrub	Flat/upslope (0°)	>100m	BAL-Low	N/A	N/A
783		2	Class D Scrub	Flat/upslope (0°)	>100m	BAL-Low	N/A	N/A
798		2	Class D Scrub	Flat/upslope (0°)	>100m	BAL-Low	N/A	N/A
800		2	Class D Scrub	Flat/upslope (0°)	>100m	BAL-Low	N/A	N/A
1340		2	Class D Scrub	Flat/upslope (0°)	87m	BAL-12.5	N/A	N/A
1343		2	Class D Scrub	Flat/upslope (0°)	69m	BAL-12.5	N/A	N/A
1345		2	Class D Scrub	Flat/upslope (0°)	75m	BAL-12.5	N/A	N/A
1357		2	Class D Scrub	Flat/upslope (0°)	95m	BAL-12.5	5m truncated rear setback	BAL-Low
1361		2	Class D Scrub	Flat/upslope (0°)	67m	BAL-12.5	N/A	N/A
1363		2	Class D Scrub	Flat/upslope (0°)	66m	BAL-12.5	N/A	N/A
1370		2	Class D Scrub	Flat/upslope (0°)	91m	BAL-12.5	N/A	N/A
1380		2	Class D Scrub	Flat/upslope (0°)	17m	BAL-29	2m truncated side setback off southern boundary	BAL-19
1381		2	Class D Scrub	Flat/upslope (0°)	30m	BAL-12.5	N/A	N/A
1382		2	Class D Scrub	Flat/upslope (0°)	43m	BAL-12.5	N/A	N/A
1383		2	Class D Scrub	Flat/upslope (0°)	55m	BAL-12.5	N/A	N/A
1385		2	Class D Scrub	Flat/upslope (0°)	33m	BAL-12.5	N/A	N/A

Method 1 BAL determination								
Lot	Designated bushfire prone	Vegetation plot	Vegetation classification	Effective slope	Separation distance	Highest BAL	Building setback to achieve lower BAL	Reduced BAL *
1386	Yes	2	Class D Scrub	Flat/upslope (0°)	15m	BAL-29	4m side setback off southern boundary	BAL-19
1387		2	Class D Scrub	Flat/upslope (0°)	15m	BAL-29	4m front setback	BAL-19
1388		2	Class D Scrub	Flat/upslope (0°)	18m	BAL-29	1m truncated front setback	BAL-19
1389		2	Class D Scrub	Flat/upslope (0°)	40m	BAL-12.5	N/A	N/A
1390		2	Class D Scrub	Flat/upslope (0°)	53m	BAL-12.5	N/A	N/A
1391		2	Class D Scrub	Flat/upslope (0°)	27m	BAL-12.5	N/A	N/A
1392		2	Class D Scrub	Flat/upslope (0°)	26m	BAL-19	1m front setback	BAL-12.5
1393		2	Class D Scrub	Flat/upslope (0°)	23m	BAL-19	4m truncated front setback	BAL-12.5
1394		2	Class D Scrub	Flat/upslope (0°)	22m	BAL-19	5m truncated front setback	BAL-12.5
1395		2	Class D Scrub	Flat/upslope (0°)	22m	BAL-19	5m front setback	BAL-12.5
1396		2	Class D Scrub	Flat/upslope (0°)	21m	BAL-19	6m front setback	BAL-12.5
1401		2	Class D Scrub	Flat/upslope (0°)	21m	BAL-19	6m truncated front setback	BAL-12.5
1402		2	Class D Scrub	Flat/upslope (0°)	26m	BAL-19	1m truncated front setback	BAL-12.5
1404		2	Class D Scrub	Flat/upslope (0°)	37m	BAL-12.5	N/A	N/A
1405		2	Class D Scrub	Flat/upslope (0°)	32m	BAL-12.5	N/A	N/A
1406		2	Class D Scrub	Flat/upslope (0°)	24m	BAL-19	3m truncated front setback	BAL-12.5
1407		2	Class D Scrub	Flat/upslope (0°)	38m	BAL-12.5	N/A	N/A
1408		2	Class D Scrub	Flat/upslope (0°)	56m	BAL-12.5	N/A	N/A
2172		2	Class D Scrub	Flat/upslope (0°)	14m	BAL-29	5m front setback	BAL-19
2187	No	N/A	N/A	N/A		N/A	N/A	N/A
2196	Yes	2	Class D Scrub	Flat/upslope (0°)	44m	BAL-12.5	N/A	N/A
2211		2	Class D Scrub	Flat/upslope (0°)	54m	BAL-12.5	N/A	N/A

NOTES:
 * The reduced BAL rating can only be confirmed once the building plan for the relevant lot has been prepared to demonstrate compliance with the recommended setback and an updated BAL certificate can be prepared at that time.

2.2.2 BAL certificates

BAL certificates for the subject lots are provided in Appendix A in accordance with the BAL contour assessment results detailed in Table 3.



Legend

- | | | | |
|--|---|--|------------------|
| | Project area | | BAL FZ |
| | 100m assessment area | | BAL 40 |
| | 150m assessment area | | BAL 29 |
| | Cadastral boundary | | BAL 19 |
| | Bushfire prone areas | | BAL 12.5 |
| | Classified vegetation | | BAL Low |
| | Proposed lots | | Stage boundaries |
| | Future indicative lot layout on adjacent stages | | Roads (MRWA) |

Scale 1:4,200 at A4

0 50 100
metres

Coord. Sys. GDA 1994 MGA Zone 50



Job No: 60921

Client: Development WA

Version: A

Date: 27-Aug-2021

Drawn By: jcrute

Checked By: CT

Various lots, Stages 15–19
Jindowie Estate, Yanchep, WA

BAL CONTOUR MAP

FIGURE 2



3. Conclusion and recommendations

This BAL assessment report has been prepared for 55 residential lots within Stages 15–19 Jindowie, Yanchep to provide BAL certification for individual lots for use at the building permit stage.

Assessment results are consistent with current on-ground conditions. Strategen-JBS&G considers that the BAL contour assessment and BAL certificates outlined in this report are accurate to inform individual lot building permit applications.

Ongoing requirements of the current City of Wanneroo annual firebreak notice should continue to be implemented as required, particularly with regards to ongoing fuel management of vacant lots.

4. References

Department of Fire and Emergency Services (DFES) 2019, *Map of Bush Fire Prone Areas*, [Online], Government of Western Australia, available from:
<https://maps.slip.wa.gov.au/landgate/bushfireprone/>, [26/08/2021].

Department of Planning (DoP) 2016, *Visual guide for bushfire risk assessment in Western Australia*, Department of Planning, Perth.

Standards Australia (SA) 2018, *Australian Standard AS 3959–2018 Construction of Buildings in Bushfire-prone Areas*, Standards Australia, Sydney.

5. Limitations

Scope of services

This report ("the report") has been prepared by Strategen-JBS&G in accordance with the scope of services set out in the contract, or as otherwise agreed, between the Client and Strategen-JBS&G. In some circumstances, a range of factors such as time, budget, access and/or site disturbance constraints may have limited the scope of services. This report is strictly limited to the matters stated in it and is not to be read as extending, by implication, to any other matter in connection with the matters addressed in it.

Reliance on data

In preparing the report, Strategen-JBS&G has relied upon data and other information provided by the Client and other individuals and organisations, most of which are referred to in the report ("the data"). Except as otherwise expressly stated in the report, Strategen-JBS&G has not verified the accuracy or completeness of the data. To the extent that the statements, opinions, facts, information, conclusions and/or recommendations in the report ("conclusions") are based in whole or part on the data, those conclusions are contingent upon the accuracy and completeness of the data. Strategen-JBS&G has also not attempted to determine whether any material matter has been omitted from the data. Strategen-JBS&G will not be liable in relation to incorrect conclusions should any data, information or condition be incorrect or have been concealed, withheld, misrepresented or otherwise not fully disclosed to Strategen-JBS&G. The making of any assumption does not imply that Strategen-JBS&G has made any enquiry to verify the correctness of that assumption.

The report is based on conditions encountered and information received at the time of preparation of this report or the time that site investigations were carried out. Strategen-JBS&G disclaims responsibility for any changes that may have occurred after this time. This report and any legal issues arising from it are governed by and construed in accordance with the law of Western Australia as at the date of this report.

Environmental conclusions

Within the limitations imposed by the scope of services, the preparation of this report has been undertaken and performed in a professional manner, in accordance with generally accepted environmental consulting practices. No other warranty, whether express or implied, is made.

The advice herein relates only to this project and all results conclusions and recommendations made should be reviewed by a competent person with experience in environmental investigations, before being used for any other purpose.

Strategen-JBS&G accepts no liability for use or interpretation by any person or body other than the client who commissioned the works. This report should not be reproduced without prior approval by the client, or amended in any way without prior approval by Strategen-JBS&G, and should not be relied upon by other parties, who should make their own enquiries.

Appendix A BAL certificates

Bushfire Attack Level (BAL) Certificate

Determined in accordance with AS 3959-2018

This Certificate has been issued by a person accredited by Fire Protection Association Australia under the Bushfire Planning and Design (BPAD) Accreditation Scheme. The certificate details the conclusions of the full Bushfire Attack Level Assessment Report (full report) prepared by the Accredited Practitioner.

Property Details and Description of Works

Address Details	Unit no	Street no	Lot no	Street name / Plan Reference		
			700	Willandra Loop		
Local government area	Suburb			State	Postcode	
	Yanchep			WA	6035	
Main BCA class of the building	City of Wanneroo					
Description of the building or works	Class 1a	Use(s) of the building	Residential dwelling			
	Construction of a single Class 1a building and associated Class 10a building/s					

Determination of Highest Bushfire Attack Level

AS 3959 Assessment Procedure	Vegetation Classification	Effective Slope	Separation Distance	BAL
Method 1	Class C Shrubland	Flat/upslope (0°)	13m (lower BAL achievable with setback)	BAL – 19

BPAD Accredited Practitioner Details

Name Zac Cockerill	<div style="border: 1px solid black; padding: 10px;"> <p>I hereby declare that I am a BPAD accredited bushfire practitioner. </p> <p>Accreditation No. <u>37403</u></p> <p>Signature <u>[Signature]</u></p> <p>Date <u>8/9/21</u></p> </div>
Company Details JBS&G Australia Pty Ltd T/A Strategen JBS&G	
I hereby certify that I have undertaken the assessment of the above site and determined the Bushfire Attack Level stated above in accordance with the requirements of AS 3959-2018.	

Authorised Practitioner Stamp

Reliance on the assessment and determination of the Bushfire Attack Level contained in this certificate should not extend beyond a period of 12 months from the date of issue of the certificate. If this certificate was issued more than 12 months ago, it is recommended that the validity of the determination be confirmed with the Accredited Practitioner and where required an updated certificate issued.

Bushfire Attack Level (BAL) Certificate

Determined in accordance with AS 3959-2018

This Certificate has been issued by a person accredited by Fire Protection Association Australia under the Bushfire Planning and Design (BPAD) Accreditation Scheme. The certificate details the conclusions of the full Bushfire Attack Level Assessment Report (full report) prepared by the Accredited Practitioner.

Property Details and Description of Works

Address Details	Unit no	Street no	Lot no	Street name / Plan Reference		
			706	Kirrama Way		
Local government area	Suburb			State	Postcode	
	Yanchep			WA	6035	
	City of Wanneroo					
Main BCA class of the building	Class 1a	Use(s) of the building	Residential dwelling			
Description of the building or works	Construction of a single Class 1a building and associated Class 10a building/s					

Determination of Highest Bushfire Attack Level

AS 3959 Assessment Procedure	Vegetation Classification	Effective Slope	Separation Distance	BAL
Method 1	Class C Shrubland	Flat/upslope (0°)	87m	BAL - 12.5

BPAD Accredited Practitioner Details

Name Zac Cockerill	 <p>I hereby declare that I am a BPAD accredited bushfire practitioner.</p> <p>Accreditation No. <u>37803</u></p> <p>Signature <u>[Signature]</u></p> <p>Date <u>8/9/21</u></p>
Company Details JBS&G Australia Pty Ltd T/A Strategen JBS&G	
I hereby certify that I have undertaken the assessment of the above site and determined the Bushfire Attack Level stated above in accordance with the requirements of AS 3959-2018.	

Authorised Practitioner Stamp

Reliance on the assessment and determination of the Bushfire Attack Level contained in this certificate should not extend beyond a period of 12 months from the date of issue of the certificate. If this certificate was issued more than 12 months ago, it is recommended that the validity of the determination be confirmed with the Accredited Practitioner and where required an updated certificate issued.

Bushfire Attack Level (BAL) Certificate

Determined in accordance with AS 3959-2018

This Certificate has been issued by a person accredited by Fire Protection Association Australia under the Bushfire Planning and Design (BPAD) Accreditation Scheme. The certificate details the conclusions of the full Bushfire Attack Level Assessment Report (full report) prepared by the Accredited Practitioner.

Property Details and Description of Works

Address Details	Unit no	Street no	Lot no	Street name / Plan Reference		
			718	Willandra Loop		
Local government area	Suburb			State	Postcode	
	Yanchep			WA	6035	
Main BCA class of the building	City of Wanneroo					
Description of the building or works	Class 1a	Use(s) of the building	Residential dwelling			
	Construction of a single Class 1a building and associated Class 10a building/s					

Determination of Highest Bushfire Attack Level

AS 3959 Assessment Procedure	Vegetation Classification	Effective Slope	Separation Distance	BAL
Method 1	Class C Shrubland	Flat/upslope (0°)	59m	BAL - 12.5

BPAD Accredited Practitioner Details

Name Zac Cockerill	 <p>I hereby declare that I am a BPAD accredited bushfire practitioner.</p> <p>Accreditation No. <u>37803</u></p> <p>Signature <u>[Signature]</u></p> <p>Date <u>8/9/21</u></p>
Company Details JBS&G Australia Pty Ltd T/A Strategen JBS&G	
I hereby certify that I have undertaken the assessment of the above site and determined the Bushfire Attack Level stated above in accordance with the requirements of AS 3959-2018.	

Authorised Practitioner Stamp

Reliance on the assessment and determination of the Bushfire Attack Level contained in this certificate should not extend beyond a period of 12 months from the date of issue of the certificate. If this certificate was issued more than 12 months ago, it is recommended that the validity of the determination be confirmed with the Accredited Practitioner and where required an updated certificate issued.

Bushfire Attack Level (BAL) Certificate

Determined in accordance with AS 3959-2018

This Certificate has been issued by a person accredited by Fire Protection Association Australia under the Bushfire Planning and Design (BPAD) Accreditation Scheme. The certificate details the conclusions of the full Bushfire Attack Level Assessment Report (full report) prepared by the Accredited Practitioner.

Property Details and Description of Works

Address Details	Unit no	Street no	Lot no	Street name / Plan Reference		
			720	Willandra Loop		
Local government area	Suburb			State	Postcode	
	Yanchep			WA	6035	
Main BCA class of the building	City of Wanneroo					
Description of the building or works	Class 1a	Use(s) of the building	Residential dwelling			
	Construction of a single Class 1a building and associated Class 10a building/s					

Determination of Highest Bushfire Attack Level

AS 3959 Assessment Procedure	Vegetation Classification	Effective Slope	Separation Distance	BAL
Method 1	Class C Shrubland	Flat/upslope (0°)	13m (lower BAL achievable with setback)	BAL - 19

BPAD Accredited Practitioner Details

Name Zac Cockerill	<div>  <p>I hereby declare that I am a BPAD accredited bushfire practitioner.</p> <p>Accreditation No. 37803</p> <p>Signature </p> <p>Date 8/9/21</p> </div>
Company Details JBS&G Australia Pty Ltd T/A Strategen JBS&G	
I hereby certify that I have undertaken the assessment of the above site and determined the Bushfire Attack Level stated above in accordance with the requirements of AS 3959-2018.	

Authorised Practitioner Stamp

Reliance on the assessment and determination of the Bushfire Attack Level contained in this certificate should not extend beyond a period of 12 months from the date of issue of the certificate. If this certificate was issued more than 12 months ago, it is recommended that the validity of the determination be confirmed with the Accredited Practitioner and where required an updated certificate issued.

Bushfire Attack Level (BAL) Certificate

Determined in accordance with AS 3959-2018

This Certificate has been issued by a person accredited by Fire Protection Association Australia under the Bushfire Planning and Design (BPAD) Accreditation Scheme. The certificate details the conclusions of the full Bushfire Attack Level Assessment Report (full report) prepared by the Accredited Practitioner.


Property Details and Description of Works

Address Details	Unit no	Street no	Lot no	Street name / Plan Reference		
			725	Willandra Loop		
Local government area	Suburb			State	Postcode	
	Yanchep			WA	6035	
Main BCA class of the building	City of Wanneroo					
Description of the building or works	Class 1a	Use(s) of the building	Residential dwelling			
	Construction of a single Class 1a building and associated Class 10a building/s					

Determination of Highest Bushfire Attack Level

AS 3959 Assessment Procedure	Vegetation Classification	Effective Slope	Separation Distance	BAL
Method 1	Class B Woodland	Flat/upslope (0°)	41m	BAL - 12.5

BPAD Accredited Practitioner Details

Name Zac Cockerill	<div style="border: 1px solid black; padding: 10px;"> <p>I hereby declare that I am a BPAD accredited bushfire practitioner.</p> <p>Accreditation No. <u>37803</u></p> <p>Signature <u>[Signature]</u></p> <p>Date <u>8/9/21</u></p> </div> 
Company Details JBS&G Australia Pty Ltd T/A Strategen JBS&G	
I hereby certify that I have undertaken the assessment of the above site and determined the Bushfire Attack Level stated above in accordance with the requirements of AS 3959-2018.	

Authorised Practitioner Stamp

Reliance on the assessment and determination of the Bushfire Attack Level contained in this certificate should not extend beyond a period of 12 months from the date of issue of the certificate. If this certificate was issued more than 12 months ago, it is recommended that the validity of the determination be confirmed with the Accredited Practitioner and where required an updated certificate issued.

Bushfire Attack Level (BAL) Certificate

Determined in accordance with AS 3959-2018

This Certificate has been issued by a person accredited by Fire Protection Association Australia under the Bushfire Planning and Design (BPAD) Accreditation Scheme. The certificate details the conclusions of the full Bushfire Attack Level Assessment Report (full report) prepared by the Accredited Practitioner.

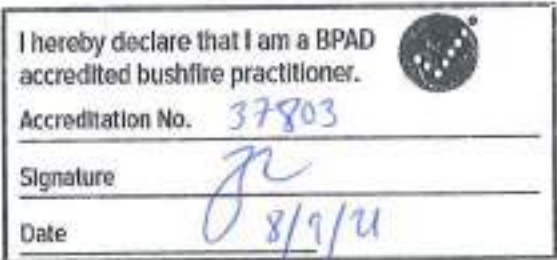
Property Details and Description of Works

Address Details	Unit no	Street no	Lot no	Street name / Plan Reference		
			729	Willandra Loop		
Local government area	Suburb			State	Postcode	
	Yanchep			WA	6035	
Main BCA class of the building	City of Wanneroo					
Description of the building or works	Class 1a	Use(s) of the building	Residential dwelling			
	Construction of a single Class 1a building and associated Class 10a building/s					

Determination of Highest Bushfire Attack Level

AS 3959 Assessment Procedure	Vegetation Classification	Effective Slope	Separation Distance	BAL
Method 1	Class D Scrub	Flat/upslope (0°)	>100m	BAL – LOW

BPAD Accredited Practitioner Details

<p>Name Zac Cockerill</p>	 <p>I hereby declare that I am a BPAD accredited bushfire practitioner.</p> <p>Accreditation No. <u>37803</u></p> <p>Signature <u>[Signature]</u></p> <p>Date <u>8/9/21</u></p>
<p>Company Details JBS&G Australia Pty Ltd T/A Strategen JBS&G</p>	
<p>I hereby certify that I have undertaken the assessment of the above site and determined the Bushfire Attack Level stated above in accordance with the requirements of AS 3959-2018.</p>	

Authorised Practitioner Stamp

Reliance on the assessment and determination of the Bushfire Attack Level contained in this certificate should not extend beyond a period of 12 months from the date of issue of the certificate. If this certificate was issued more than 12 months ago, it is recommended that the validity of the determination be confirmed with the Accredited Practitioner and where required an updated certificate issued.

Bushfire Attack Level (BAL) Certificate

Determined in accordance with AS 3959-2018

This Certificate has been issued by a person accredited by Fire Protection Association Australia under the Bushfire Planning and Design (BPAD) Accreditation Scheme. The certificate details the conclusions of the full Bushfire Attack Level Assessment Report (full report) prepared by the Accredited Practitioner.

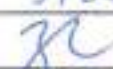
Property Details and Description of Works

Address Details	Unit no	Street no	Lot no	Street name / Plan Reference		
			731	Willandra Loop		
Local government area	Suburb			State	Postcode	
	Yanchep			WA	6035	
	City of Wanneroo					
Main BCA class of the building	Class 1a	Use(s) of the building	Residential dwelling			
Description of the building or works	Construction of a single Class 1a building and associated Class 10a building/s					

Determination of Highest Bushfire Attack Level

AS 3959 Assessment Procedure	Vegetation Classification	Effective Slope	Separation Distance	BAL
Method 1	Class D Scrub	Flat/upslope (0°)	>100m	BAL – LOW

BPAD Accredited Practitioner Details

Name Zac Cockerill	<div> <p>I hereby declare that I am a BPAD accredited bushfire practitioner.</p> <p>Accreditation No. 37803</p> <p>Signature </p> <p>Date 8/9/21</p> </div>
Company Details JBS&G Australia Pty Ltd T/A Strategen JBS&G	
I hereby certify that I have undertaken the assessment of the above site and determined the Bushfire Attack Level stated above in accordance with the requirements of AS 3959-2018.	

Authorised Practitioner Stamp

Reliance on the assessment and determination of the Bushfire Attack Level contained in this certificate should not extend beyond a period of 12 months from the date of issue of the certificate. If this certificate was issued more than 12 months ago, it is recommended that the validity of the determination be confirmed with the Accredited Practitioner and where required an updated certificate issued.

Bushfire Attack Level (BAL) Certificate

Determined in accordance with AS 3959-2018

This Certificate has been issued by a person accredited by Fire Protection Association Australia under the Bushfire Planning and Design (BPAD) Accreditation Scheme. The certificate details the conclusions of the full Bushfire Attack Level Assessment Report (full report) prepared by the Accredited Practitioner.

Property Details and Description of Works

Address Details	Unit no	Street no	Lot no	Street name / Plan Reference		
			741	Paluma Grove		
Local government area	Suburb			State	Postcode	
	Yanchep			WA	6035	
Main BCA class of the building	City of Wanneroo					
Description of the building or works	Class 1a	Use(s) of the building	Residential dwelling			
	Construction of a single Class 1a building and associated Class 10a building/s					

Determination of Highest Bushfire Attack Level

AS 3959 Assessment Procedure	Vegetation Classification	Effective Slope	Separation Distance	BAL
Method 1	Class D Scrub	Flat/upslope (0°)	>100m	BAL – LOW

BPAD Accredited Practitioner Details

Name Zac Cockerill	<div style="border: 1px solid black; padding: 5px;"> <p>I hereby declare that I am a BPAD accredited bushfire practitioner.</p> <p>Accreditation No. <u>37803</u></p> <p>Signature <u>[Signature]</u></p> <p>Date <u>8/9/21</u></p> </div>
Company Details JBS&G Australia Pty Ltd T/A Strategen JBS&G	
I hereby certify that I have undertaken the assessment of the above site and determined the Bushfire Attack Level stated above in accordance with the requirements of AS 3959-2018.	

Authorised Practitioner Stamp

Reliance on the assessment and determination of the Bushfire Attack Level contained in this certificate should not extend beyond a period of 12 months from the date of issue of the certificate. If this certificate was issued more than 12 months ago, it is recommended that the validity of the determination be confirmed with the Accredited Practitioner and where required an updated certificate issued.

Bushfire Attack Level (BAL) Certificate

Determined in accordance with AS 3959-2018

This Certificate has been issued by a person accredited by Fire Protection Association Australia under the Bushfire Planning and Design (BPAD) Accreditation Scheme. The certificate details the conclusions of the full Bushfire Attack Level Assessment Report (full report) prepared by the Accredited Practitioner.

Property Details and Description of Works

Address Details	Unit no	Street no	Lot no	Street name / Plan Reference		
			751	Willandra Loop		
Local government area	Suburb			State	Postcode	
	Yanchep			WA	6035	
	City of Wanneroo					
Main BCA class of the building	Class 1a	Use(s) of the building	Residential dwelling			
Description of the building or works	Construction of a single Class 1a building and associated Class 10a building/s					

Determination of Highest Bushfire Attack Level

AS 3959 Assessment Procedure	Vegetation Classification	Effective Slope	Separation Distance	BAL
Method 1	Class D Scrub	Flat/upslope (0°)	>100m	BAL – LOW

BPAD Accredited Practitioner Details

Name Zac Cockerill	<div style="border: 1px solid black; padding: 5px;"> <p>I hereby declare that I am a BPAD accredited bushfire practitioner.</p> <p>Accreditation No. <u>37803</u></p> <p>Signature <u>[Signature]</u></p> <p>Date <u>8/9/21</u></p> </div>
Company Details JBS&G Australia Pty Ltd T/A Strategen JBS&G	
I hereby certify that I have undertaken the assessment of the above site and determined the Bushfire Attack Level stated above in accordance with the requirements of AS 3959-2018.	

Authorised Practitioner Stamp

Reliance on the assessment and determination of the Bushfire Attack Level contained in this certificate should not extend beyond a period of 12 months from the date of issue of the certificate. If this certificate was issued more than 12 months ago, it is recommended that the validity of the determination be confirmed with the Accredited Practitioner and where required an updated certificate issued.

Bushfire Attack Level (BAL) Certificate

Determined in accordance with AS 3959-2018

This Certificate has been issued by a person accredited by Fire Protection Association Australia under the Bushfire Planning and Design (BPAD) Accreditation Scheme. The certificate details the conclusions of the full Bushfire Attack Level Assessment Report (full report) prepared by the Accredited Practitioner.

Property Details and Description of Works

Address Details	Unit no	Street no	Lot no	Street name / Plan Reference		
			757	Starcke Lane		
Local government area	Suburb			State	Postcode	
	Yanchep			WA	6035	
Main BCA class of the building	City of Wanneroo					
Description of the building or works	Class 1a	Use(s) of the building	Residential dwelling			
	Construction of a single Class 1a building and associated Class 10a building/s					

Determination of Highest Bushfire Attack Level

AS 3959 Assessment Procedure	Vegetation Classification	Effective Slope	Separation Distance	BAL
Method 1	Class D Scrub	Flat/upslope (0°)	>100m	BAL – LOW

BPAD Accredited Practitioner Details

Name Zac Cockerill	 <p>I hereby declare that I am a BPAD accredited bushfire practitioner.</p> <p>Accreditation No. 37803</p> <p>Signature <i>[Signature]</i></p> <p>Date 8/1/21</p>
Company Details JBS&G Australia Pty Ltd T/A Strategen JBS&G	
I hereby certify that I have undertaken the assessment of the above site and determined the Bushfire Attack Level stated above in accordance with the requirements of AS 3959-2018.	

Authorised Practitioner Stamp

Reliance on the assessment and determination of the Bushfire Attack Level contained in this certificate should not extend beyond a period of 12 months from the date of issue of the certificate. If this certificate was issued more than 12 months ago, it is recommended that the validity of the determination be confirmed with the Accredited Practitioner and where required an updated certificate issued.

Bushfire Attack Level (BAL) Certificate

Determined in accordance with AS 3959-2018

This Certificate has been issued by a person accredited by Fire Protection Association Australia under the Bushfire Planning and Design (BPAD) Accreditation Scheme. The certificate details the conclusions of the full Bushfire Attack Level Assessment Report (full report) prepared by the Accredited Practitioner.

Property Details and Description of Works

Address Details	Unit no	Street no	Lot no	Street name / Plan Reference		
			758	Starcke Lane		
	Suburb			State	Postcode	
	Yanchep			WA	6035	
Local government area	City of Wanneroo					
Main BCA class of the building	Class 1a	Use(s) of the building	Residential dwelling			
Description of the building or works	Construction of a single Class 1a building and associated Class 10a building/s					

Determination of Highest Bushfire Attack Level

AS 3959 Assessment Procedure	Vegetation Classification	Effective Slope	Separation Distance	BAL
Method 1	Class D Scrub	Flat/upslope (0°)	>100m	BAL – LOW

BPAD Accredited Practitioner Details

Name Zac Cockerill	<div style="border: 1px solid black; padding: 10px;"> <p>I hereby declare that I am a BPAD accredited bushfire practitioner.</p> <p>Accreditation No. <u>37803</u></p> <p>Signature <u>[Signature]</u></p> <p>Date <u>8/9/21</u></p> </div>
Company Details JBS&G Australia Pty Ltd T/A Strategen JBS&G	
I hereby certify that I have undertaken the assessment of the above site and determined the Bushfire Attack Level stated above in accordance with the requirements of AS 3959-2018.	

Authorised Practitioner Stamp

Reliance on the assessment and determination of the Bushfire Attack Level contained in this certificate should not extend beyond a period of 12 months from the date of issue of the certificate. If this certificate was issued more than 12 months ago, it is recommended that the validity of the determination be confirmed with the Accredited Practitioner and where required an updated certificate issued.

Bushfire Attack Level (BAL) Certificate

Determined in accordance with AS 3959-2018

This Certificate has been issued by a person accredited by Fire Protection Association Australia under the Bushfire Planning and Design (BPAD) Accreditation Scheme. The certificate details the conclusions of the full Bushfire Attack Level Assessment Report (full report) prepared by the Accredited Practitioner.

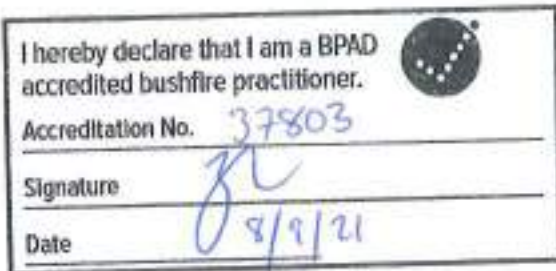
Property Details and Description of Works

Address Details	Unit no	Street no	Lot no	Street name / Plan Reference		
			759	Starcke Lane		
Local government area	Suburb			State	Postcode	
	Yanchep			WA	6035	
	City of Wanneroo					
Main BCA class of the building	Class 1a	Use(s) of the building	Residential dwelling			
Description of the building or works	Construction of a single Class 1a building and associated Class 10a building/s					

Determination of Highest Bushfire Attack Level

AS 3959 Assessment Procedure	Vegetation Classification	Effective Slope	Separation Distance	BAL
Method 1	Class D Scrub	Flat/upslope (0°)	>100m	BAL – LOW

BPAD Accredited Practitioner Details

Name Zac Cockerill	 <p>I hereby declare that I am a BPAD accredited bushfire practitioner.</p> <p>Accreditation No. 37803</p> <p>Signature [Signature]</p> <p>Date 8/9/21</p>
Company Details JBS&G Australia Pty Ltd T/A Strategen JBS&G	
I hereby certify that I have undertaken the assessment of the above site and determined the Bushfire Attack Level stated above in accordance with the requirements of AS 3959-2018.	

Authorised Practitioner Stamp

Reliance on the assessment and determination of the Bushfire Attack Level contained in this certificate should not extend beyond a period of 12 months from the date of issue of the certificate. If this certificate was issued more than 12 months ago, it is recommended that the validity of the determination be confirmed with the Accredited Practitioner and where required an updated certificate issued.

Bushfire Attack Level (BAL) Certificate

Determined in accordance with AS 3959-2018

This Certificate has been issued by a person accredited by Fire Protection Association Australia under the Bushfire Planning and Design (BPAD) Accreditation Scheme. The certificate details the conclusions of the full Bushfire Attack Level Assessment Report (full report) prepared by the Accredited Practitioner.

Property Details and Description of Works

Address Details	Unit no	Street no	Lot no	Street name / Plan Reference		
			775	Paluma Grove		
Local government area	Suburb			State	Postcode	
	Yanchep			WA	6035	
	City of Wanneroo					
Main BCA class of the building	Class 1a	Use(s) of the building	Residential dwelling			
Description of the building or works	Construction of a single Class 1a building and associated Class 10a building/s					

Determination of Highest Bushfire Attack Level

AS 3959 Assessment Procedure	Vegetation Classification	Effective Slope	Separation Distance	BAL
Method 1	Class D Scrub	Flat/upslope (0°)	>100m	BAL – LOW

BPAD Accredited Practitioner Details

Name Zac Cockerill	<div style="border: 1px solid black; padding: 10px; display: inline-block;"> <p>I hereby declare that I am a BPAD accredited bushfire practitioner.</p> <p>Accreditation No. <u>37803</u></p> <p>Signature <u>[Signature]</u></p> <p>Date <u>8/9/21</u></p> </div> 
Company Details JBS&G Australia Pty Ltd T/A Strategen JBS&G	
I hereby certify that I have undertaken the assessment of the above site and determined the Bushfire Attack Level stated above in accordance with the requirements of AS 3959-2018.	

Authorised Practitioner Stamp

Reliance on the assessment and determination of the Bushfire Attack Level contained in this certificate should not extend beyond a period of 12 months from the date of issue of the certificate. If this certificate was issued more than 12 months ago, it is recommended that the validity of the determination be confirmed with the Accredited Practitioner and where required an updated certificate issued.

Bushfire Attack Level (BAL) Certificate

Determined in accordance with AS 3959-2018

This Certificate has been issued by a person accredited by Fire Protection Association Australia under the Bushfire Planning and Design (BPAD) Accreditation Scheme. The certificate details the conclusions of the full Bushfire Attack Level Assessment Report (full report) prepared by the Accredited Practitioner.

Property Details and Description of Works

Address Details	Unit no	Street no	Lot no	Street name / Plan Reference		
			777	Paluma Grove		
Local government area	Suburb			State		Postcode
	Yanchep			WA		6035
Main BCA class of the building	City of Wanneroo					
	Class 1a	Use(s) of the building		Residential dwelling		
Description of the building or works	Construction of a single Class 1a building and associated Class 10a building/s					

Determination of Highest Bushfire Attack Level

AS 3959 Assessment Procedure	Vegetation Classification	Effective Slope	Separation Distance	BAL
Method 1	Class D Scrub	Flat/upslope (0°)	>100m	BAL – LOW

BPAD Accredited Practitioner Details

Name Zac Cockerill	 <p>I hereby declare that I am a BPAD accredited bushfire practitioner.</p> <p>Accreditation No. <u>37903</u></p> <p>Signature <u>[Signature]</u></p> <p>Date <u>8/9/21</u></p>
Company Details JBS&G Australia Pty Ltd T/A Strategen JBS&G	
I hereby certify that I have undertaken the assessment of the above site and determined the Bushfire Attack Level stated above in accordance with the requirements of AS 3959-2018.	

Authorised Practitioner Stamp

Reliance on the assessment and determination of the Bushfire Attack Level contained in this certificate should not extend beyond a period of 12 months from the date of issue of the certificate. If this certificate was issued more than 12 months ago, it is recommended that the validity of the determination be confirmed with the Accredited Practitioner and where required an updated certificate issued.

Bushfire Attack Level (BAL) Certificate

Determined in accordance with AS 3959-2018

This Certificate has been issued by a person accredited by Fire Protection Association Australia under the Bushfire Planning and Design (BPAD) Accreditation Scheme. The certificate details the conclusions of the full Bushfire Attack Level Assessment Report (full report) prepared by the Accredited Practitioner.


Property Details and Description of Works

Address Details	Unit no	Street no	Lot no	Street name / Plan Reference		
			779	Paluma Grove		
Local government area	Suburb			State	Postcode	
	Yanchep			WA	6035	
Main BCA class of the building	City of Wanneroo					
Description of the building or works	Class 1a	Use(s) of the building		Residential dwelling		
	Construction of a single Class 1a building and associated Class 10a building/s					

Determination of Highest Bushfire Attack Level

AS 3959 Assessment Procedure	Vegetation Classification	Effective Slope	Separation Distance	BAL
Method 1	Class D Scrub	Flat/upslope (0°)	>100m	BAL – LOW

BPAD Accredited Practitioner Details

Name Zac Cockerill	<div style="border: 1px solid black; padding: 10px; display: inline-block;"> <p>I hereby declare that I am a BPAD accredited bushfire practitioner.</p> <p>Accreditation No. <u>37803</u></p> <p>Signature <u>[Signature]</u></p> <p>Date <u>8/9/21</u></p> </div> 
Company Details JBS&G Australia Pty Ltd T/A Strategen JBS&G	
I hereby certify that I have undertaken the assessment of the above site and determined the Bushfire Attack Level stated above in accordance with the requirements of AS 3959-2018.	

Authorized Practitioner Stamp

Reliance on the assessment and determination of the Bushfire Attack Level contained in this certificate should not extend beyond a period of 12 months from the date of issue of the certificate. If this certificate was issued more than 12 months ago, it is recommended that the validity of the determination be confirmed with the Accredited Practitioner and where required an updated certificate issued.

Bushfire Attack Level (BAL) Certificate

Determined in accordance with AS 3959-2018

This Certificate has been issued by a person accredited by Fire Protection Association Australia under the Bushfire Planning and Design (BPAD) Accreditation Scheme. The certificate details the conclusions of the full Bushfire Attack Level Assessment Report (full report) prepared by the Accredited Practitioner.

Property Details and Description of Works

Address Details	Unit no	Street no	Lot no	Street name / Plan Reference		
			783	Burleigh Boulevard		
Local government area	Suburb			State	Postcode	
	Yanchep			WA	6035	
	City of Wanneroo					
Main BCA class of the building	Class 1a	Use(s) of the building	Residential dwelling			
Description of the building or works	Construction of a single Class 1a building and associated Class 10a building/s					

Determination of Highest Bushfire Attack Level

AS 3959 Assessment Procedure	Vegetation Classification	Effective Slope	Separation Distance	BAL
Method 1	Class D Scrub	Flat/upslope (0°)	>100m	BAL – LOW

BPAD Accredited Practitioner Details

Name Zac Cockerill	<div style="border: 1px solid black; padding: 10px;"> <p>I hereby declare that I am a BPAD accredited bushfire practitioner.</p> <p>Accreditation No. <u>37803</u></p> <p>Signature <u>[Signature]</u></p> <p>Date <u>8/9/21</u></p> </div>
Company Details JBS&G Australia Pty Ltd T/A Strategen JBS&G	
I hereby certify that I have undertaken the assessment of the above site and determined the Bushfire Attack Level stated above in accordance with the requirements of AS 3959-2018.	

Authorised Practitioner Stamp

Reliance on the assessment and determination of the Bushfire Attack Level contained in this certificate should not extend beyond a period of 12 months from the date of issue of the certificate. If this certificate was issued more than 12 months ago, it is recommended that the validity of the determination be confirmed with the Accredited Practitioner and where required an updated certificate issued.

Bushfire Attack Level (BAL) Certificate

Determined in accordance with AS 3959-2018

This Certificate has been issued by a person accredited by Fire Protection Association Australia under the Bushfire Planning and Design (BPAD) Accreditation Scheme. The certificate details the conclusions of the full Bushfire Attack Level Assessment Report (full report) prepared by the Accredited Practitioner.

Property Details and Description of Works

Address Details	Unit no	Street no	Lot no	Street name / Plan Reference		
			798	Paluma Grove		
Local government area	Suburb			State	Postcode	
	Yanchep			WA	6035	
Main BCA class of the building	City of Wanneroo					
Description of the building or works	Class 1a	Use(s) of the building	Residential dwelling			
	Construction of a single Class 1a building and associated Class 10a building/s					

Determination of Highest Bushfire Attack Level

AS 3959 Assessment Procedure	Vegetation Classification	Effective Slope	Separation Distance	BAL
Method 1	Class D Scrub	Flat/Upslope (0°)	>100m	BAL – LOW

BPAD Accredited Practitioner Details

Name Zac Cockerill	<div style="border: 1px solid black; padding: 5px;"> <p>I hereby declare that I am a BPAD accredited bushfire practitioner.</p> <p>Accreditation No. <u>37903</u></p> <p>Signature <u>[Signature]</u></p> <p>Date <u>8/9/21</u></p> </div>
Company Details JBS&G Australia Pty Ltd T/A Strategen JBS&G	
I hereby certify that I have undertaken the assessment of the above site and determined the Bushfire Attack Level stated above in accordance with the requirements of AS 3959-2018.	

Authorised Practitioner Stamp

Reliance on the assessment and determination of the Bushfire Attack Level contained in this certificate should not extend beyond a period of 12 months from the date of issue of the certificate. If this certificate was issued more than 12 months ago, it is recommended that the validity of the determination be confirmed with the Accredited Practitioner and where required an updated certificate issued.

Bushfire Attack Level (BAL) Certificate

Determined in accordance with AS 3959-2018

This Certificate has been issued by a person accredited by Fire Protection Association Australia under the Bushfire Planning and Design (BPAD) Accreditation Scheme. The certificate details the conclusions of the full Bushfire Attack Level Assessment Report (full report) prepared by the Accredited Practitioner.

Property Details and Description of Works

Address Details	Unit no	Street no	Lot no	Street name / Plan Reference		
			800	Paluma Grove		
Local government area	Suburb			State		Postcode
	Yanchep			WA		6035
Main BCA class of the building	City of Wanneroo					
Description of the building or works	Class 1a	Use(s) of the building		Residential dwelling		
	Construction of a single Class 1a building and associated Class 10a building/s					

Determination of Highest Bushfire Attack Level

AS 3959 Assessment Procedure	Vegetation Classification	Effective Slope	Separation Distance	BAL
Method 1	Class D Scrub	Flat/upslope [0°]	>100m	BAL – LOW

BPAD Accredited Practitioner Details

Name Zac Cockerill	<div> <p>I hereby declare that I am a BPAD accredited bushfire practitioner.</p> <p>Accreditation No. <u>37803</u></p> <p>Signature <u>[Signature]</u></p> <p>Date <u>8/9/21</u></p> </div>
Company Details JBS&G Australia Pty Ltd T/A Strategen JBS&G	
I hereby certify that I have undertaken the assessment of the above site and determined the Bushfire Attack Level stated above in accordance with the requirements of AS 3959-2018.	

Authorised Practitioner Stamp

Reliance on the assessment and determination of the Bushfire Attack Level contained in this certificate should not extend beyond a period of 12 months from the date of issue of the certificate. If this certificate was issued more than 12 months ago, it is recommended that the validity of the determination be confirmed with the Accredited Practitioner and where required an updated certificate issued.

Bushfire Attack Level (BAL) Certificate

Determined in accordance with AS 3959-2018

This Certificate has been issued by a person accredited by Fire Protection Association Australia under the Bushfire Planning and Design (BPAD) Accreditation Scheme. The certificate details the conclusions of the full Bushfire Attack Level Assessment Report (full report) prepared by the Accredited Practitioner.

Property Details and Description of Works

Address Details	Unit no	Street no	Lot no	Street name / Plan Reference		
			1340	Bundjalung Rise		
Local government area	Suburb			State	Postcode	
	Yanchep			WA	6035	
	City of Wanneroo					
Main BCA class of the building	Class 1a	Use(s) of the building	Residential dwelling			
Description of the building or works	Construction of a single Class 1a building and associated Class 10a building/s					

Determination of Highest Bushfire Attack Level

AS 3959 Assessment Procedure	Vegetation Classification	Effective Slope	Separation Distance	BAL
Method 1	Class D Scrub	Flat/upslope (0°)	87m	BAL - 12.5

BPAD Accredited Practitioner Details

<p>Name Zac Cockerill</p>	 <p>I hereby declare that I am a BPAD accredited bushfire practitioner.</p> <p>Accreditation No. <u>37803</u></p> <p>Signature <u>[Signature]</u></p> <p>Date <u>8/9/21</u></p>
<p>Company Details JBS&G Australia Pty Ltd T/A Strategen JBS&G</p>	
<p>I hereby certify that I have undertaken the assessment of the above site and determined the Bushfire Attack Level stated above in accordance with the requirements of AS 3959-2018.</p>	

Authorised Practitioner Stamp

Reliance on the assessment and determination of the Bushfire Attack Level contained in this certificate should not extend beyond a period of 12 months from the date of issue of the certificate. If this certificate was issued more than 12 months ago, it is recommended that the validity of the determination be confirmed with the Accredited Practitioner and where required an updated certificate issued.

Bushfire Attack Level (BAL) Certificate

Determined in accordance with AS 3959-2018

This Certificate has been issued by a person accredited by Fire Protection Association Australia under the Bushfire Planning and Design (BPAD) Accreditation Scheme. The certificate details the conclusions of the full Bushfire Attack Level Assessment Report (full report) prepared by the Accredited Practitioner.

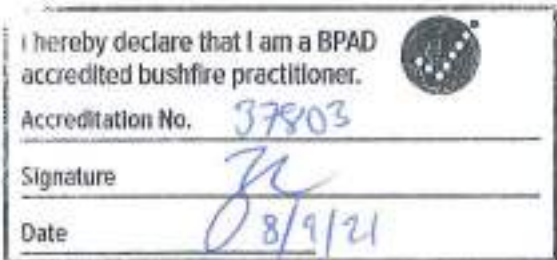
Property Details and Description of Works

Address Details	Unit no	Street no	Lot no	Street name / Plan Reference		
			1343	Bundjalung Rise		
Local government area	Suburb			State		Postcode
	Yanchep			WA		6035
Main BCA class of the building	City of Wanneroo					
Description of the building or works	Class 1a	Use(s) of the building	Residential dwelling			
	Construction of a single Class 1a building and associated Class 10a building/s					

Determination of Highest Bushfire Attack Level

AS 3959 Assessment Procedure	Vegetation Classification	Effective Slope	Separation Distance	BAL
Method 1	Class D Scrub	Flat/upslope (0°)	69m	BAL - 12.5

BPAD Accredited Practitioner Details

Name Zac Cockerill	 <p>I hereby declare that I am a BPAD accredited bushfire practitioner.</p> <p>Accreditation No. <u>37803</u></p> <p>Signature <u>[Signature]</u></p> <p>Date <u>08/9/21</u></p>
Company Details JBS&G Australia Pty Ltd T/A Strategen JBS&G	
I hereby certify that I have undertaken the assessment of the above site and determined the Bushfire Attack Level stated above in accordance with the requirements of AS 3959-2018.	

Authorised Practitioner Stamp

Reliance on the assessment and determination of the Bushfire Attack Level contained in this certificate should not extend beyond a period of 12 months from the date of issue of the certificate. If this certificate was issued more than 12 months ago, it is recommended that the validity of the determination be confirmed with the Accredited Practitioner and where required an updated certificate issued.

Bushfire Attack Level (BAL) Certificate

Determined in accordance with AS 3959-2018

This Certificate has been issued by a person accredited by Fire Protection Association Australia under the Bushfire Planning and Design (BPAD) Accreditation Scheme. The certificate details the conclusions of the full Bushfire Attack Level Assessment Report (full report) prepared by the Accredited Practitioner.

Property Details and Description of Works

Address Details	Unit no	Street no	Lot no	Street name / Plan Reference		
			1345	Carrai Way		
Local government area	Suburb			State	Postcode	
	Yanchep			WA	6035	
Main BCA class of the building	City of Wanneroo					
Description of the building or works	Class 1a	Use(s) of the building	Residential dwelling			
	Construction of a single Class 1a building and associated Class 10a building/s					

Determination of Highest Bushfire Attack Level

AS 3959 Assessment Procedure	Vegetation Classification	Effective Slope	Separation Distance	BAL
Method 1	Class D Scrub	Flat/upslope (0°)	75m	BAL - 12.5

BPAD Accredited Practitioner Details

<p>Name Zac Cockerill</p>	 <p>I hereby declare that I am a BPAD accredited bushfire practitioner.</p> <p>Accreditation No. <u>37803</u></p> <p>Signature <u>[Signature]</u></p> <p>Date <u>8/9/21</u></p>
<p>Company Details JBS&G Australia Pty Ltd T/A Strategen JBS&G</p>	
<p>I hereby certify that I have undertaken the assessment of the above site and determined the Bushfire Attack Level stated above in accordance with the requirements of AS 3959-2018.</p>	

Authorised Practitioner Stamp

Reliance on the assessment and determination of the Bushfire Attack Level contained in this certificate should not extend beyond a period of 12 months from the date of issue of the certificate. If this certificate was issued more than 12 months ago, it is recommended that the validity of the determination be confirmed with the Accredited Practitioner and where required an updated certificate issued.

Bushfire Attack Level (BAL) Certificate

Determined in accordance with AS 3959-2018

This Certificate has been issued by a person accredited by Fire Protection Association Australia under the Bushfire Planning and Design (BPAD) Accreditation Scheme. The certificate details the conclusions of the full Bushfire Attack Level Assessment Report (full report) prepared by the Accredited Practitioner.

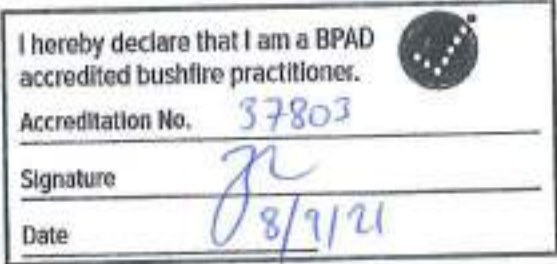
Property Details and Description of Works

Address Details	Unit no	Street no	Lot no	Street name / Plan Reference		
			1357	Burleigh Boulevard		
Local government area	Suburb			State		Postcode
	Yanchep			WA		6035
Main BCA class of the building	City of Wanneroo					
Description of the building or works	Class 1a	Use(s) of the building		Residential dwelling		
	Construction of a single Class 1a building and associated Class 10a building/s					

Determination of Highest Bushfire Attack Level

AS 3959 Assessment Procedure	Vegetation Classification	Effective Slope	Separation Distance	BAL
Method 1	Class D Scrub	Flat/upslope (0°)	95m (lower BAL achievable with setback)	BAL – 12.5

BPAD Accredited Practitioner Details

Name Zac Cockerill	 <p>I hereby declare that I am a BPAD accredited bushfire practitioner.</p> <p>Accreditation No. <u>37803</u></p> <p>Signature <u>[Signature]</u></p> <p>Date <u>8/7/21</u></p>
Company Details JBS&G Australia Pty Ltd T/A Strategen JBS&G	
I hereby certify that I have undertaken the assessment of the above site and determined the Bushfire Attack Level stated above in accordance with the requirements of AS 3959-2018.	

Authorised Practitioner Stamp

Reliance on the assessment and determination of the Bushfire Attack Level contained in this certificate should not extend beyond a period of 12 months from the date of issue of the certificate. If this certificate was issued more than 12 months ago, it is recommended that the validity of the determination be confirmed with the Accredited Practitioner and where required an updated certificate issued.

Bushfire Attack Level (BAL) Certificate

Determined in accordance with AS 3959-2018

This Certificate has been issued by a person accredited by Fire Protection Association Australia under the Bushfire Planning and Design (BPAD) Accreditation Scheme. The certificate details the conclusions of the full Bushfire Attack Level Assessment Report (full report) prepared by the Accredited Practitioner.

Property Details and Description of Works

Address Details	Unit no	Street no	Lot no	Street name / Plan Reference		
			1361	Burleigh Boulevard		
	Suburb			State		Postcode
	Yanchep			WA		6035
Local government area	City of Wanneroo					
Main BCA class of the building	Class 1a	Use(s) of the building		Residential dwelling		
Description of the building or works	Construction of a single Class 1a building and associated Class 10a building/s					

Determination of Highest Bushfire Attack Level

AS 3959 Assessment Procedure	Vegetation Classification	Effective Slope	Separation Distance	BAL
Method 1	Class D Scrub	Flat/upslope (0°)	67m	BAL - 12.5

BPAD Accredited Practitioner Details

Name Zac Cockerill	<div> <p>I hereby declare that I am a BPAD accredited bushfire practitioner.</p> <p>Accreditation No. <u>37803</u></p> <p>Signature <u>[Signature]</u></p> <p>Date <u>8/9/21</u></p> </div>
Company Details JBS&G Australia Pty Ltd T/A Strategen JBS&G	
I hereby certify that I have undertaken the assessment of the above site and determined the Bushfire Attack Level stated above in accordance with the requirements of AS 3959-2018.	

Authorised Practitioner Stamp

Reliance on the assessment and determination of the Bushfire Attack Level contained in this certificate should not extend beyond a period of 12 months from the date of issue of the certificate. If this certificate was issued more than 12 months ago, it is recommended that the validity of the determination be confirmed with the Accredited Practitioner and where required an updated certificate issued.

Bushfire Attack Level (BAL) Certificate

Determined in accordance with AS 3959-2018

This Certificate has been issued by a person accredited by Fire Protection Association Australia under the Bushfire Planning and Design (BPAD) Accreditation Scheme. The certificate details the conclusions of the full Bushfire Attack Level Assessment Report (full report) prepared by the Accredited Practitioner.

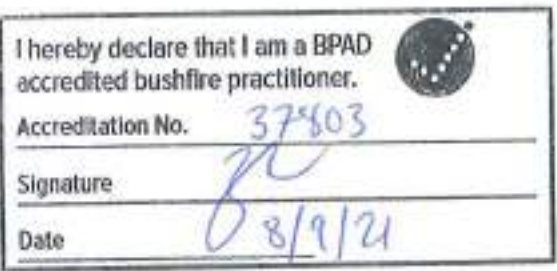
Property Details and Description of Works

Address Details	Unit no	Street no	Lot no	Street name / Plan Reference	
			1363	Burleigh Boulevard	
Local government area	Suburb			State	Postcode
	Yanchep			WA	6035
Main BCA class of the building	City of Wanneroo				
Description of the building or works	Class 1a	Use(s) of the building	Residential dwelling		
	Construction of a single Class 1a building and associated Class 10a building/s				

Determination of Highest Bushfire Attack Level

AS 3959 Assessment Procedure	Vegetation Classification	Effective Slope	Separation Distance	BAL
Method 1	Class D Scrub	Flat/upslope (0°)	66m	BAL - 12.5

BPAD Accredited Practitioner Details

Name Zac Cockerill	 <p>I hereby declare that I am a BPAD accredited bushfire practitioner.</p> <p>Accreditation No. <u>37803</u></p> <p>Signature <u>[Signature]</u></p> <p>Date <u>08/9/21</u></p>
Company Details JBS&G Australia Pty Ltd T/A Strategen JBS&G	
I hereby certify that I have undertaken the assessment of the above site and determined the Bushfire Attack Level stated above in accordance with the requirements of AS 3959-2018.	

Authorized Practitioner Stamp

Reliance on the assessment and determination of the Bushfire Attack Level contained in this certificate should not extend beyond a period of 12 months from the date of issue of the certificate. If this certificate was issued more than 12 months ago, it is recommended that the validity of the determination be confirmed with the Accredited Practitioner and where required an updated certificate issued.

Bushfire Attack Level (BAL) Certificate

Determined in accordance with AS 3959-2018

This Certificate has been issued by a person accredited by Fire Protection Association Australia under the Bushfire Planning and Design (BPAD) Accreditation Scheme. The certificate details the conclusions of the full Bushfire Attack Level Assessment Report (full report) prepared by the Accredited Practitioner.

Property Details and Description of Works

Address Details	Unit no	Street no	Lot no	Street name / Plan Reference		
			1370	Burleigh Boulevard		
Local government area	Suburb			State	Postcode	
	Yanchep			WA	6035	
Main BCA class of the building	City of Wanneroo					
Description of the building or works	Class 1a	Use(s) of the building	Residential dwelling			
	Construction of a single Class 1a building and associated Class 10a building/s					

Determination of Highest Bushfire Attack Level

AS 3959 Assessment Procedure	Vegetation Classification	Effective Slope	Separation Distance	BAL
Method 1	Class D Scrub	Flat/upslope (0°)	91m	BAL - 12.5

BPAD Accredited Practitioner Details

Name Zac Cockerill	<div> <p>I hereby declare that I am a BPAD accredited bushfire practitioner.</p> <p>Accreditation No. <u>37803</u></p> <p>Signature <u>[Signature]</u></p> <p>Date <u>8/9/21</u></p> </div>
Company Details JBS&G Australia Pty Ltd T/A Strategen JBS&G	
I hereby certify that I have undertaken the assessment of the above site and determined the Bushfire Attack Level stated above in accordance with the requirements of AS 3959-2018.	

Authorised Practitioner Stamp

Reliance on the assessment and determination of the Bushfire Attack Level contained in this certificate should not extend beyond a period of 12 months from the date of issue of the certificate. If this certificate was issued more than 12 months ago, it is recommended that the validity of the determination be confirmed with the Accredited Practitioner and where required an updated certificate issued.

Bushfire Attack Level (BAL) Certificate

Determined in accordance with AS 3959-2018

This Certificate has been issued by a person accredited by Fire Protection Association Australia under the Bushfire Planning and Design (BPAD) Accreditation Scheme. The certificate details the conclusions of the full Bushfire Attack Level Assessment Report (full report) prepared by the Accredited Practitioner.

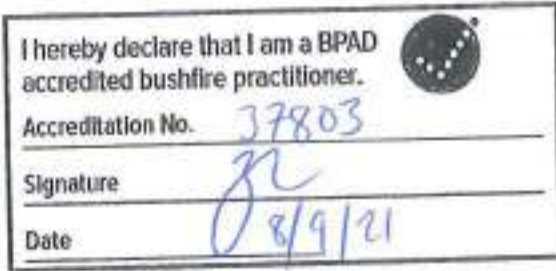
Property Details and Description of Works

Address Details	Unit no	Street no	Lot no	Street name / Plan Reference		
			1380	Idalia Way		
Local government area	Suburb			State	Postcode	
	Yanchep			WA	6035	
Main BCA class of the building	City of Wanneroo					
	Class 1a	Use(s) of the building	Residential dwelling			
Description of the building or works	Construction of a single Class 1a building and associated Class 10a building/s					

Determination of Highest Bushfire Attack Level

AS 3959 Assessment Procedure	Vegetation Classification	Effective Slope	Separation Distance	BAL
Method 1	Class D Scrub	Flat/upslope (0°)	17m (lower BAL achievable with setback)	BAL - 29

BPAD Accredited Practitioner Details

Name Zac Cockerill	 <p>I hereby declare that I am a BPAD accredited bushfire practitioner. Accreditation No. 37803 Signature [Signature] Date 8/9/21</p>
Company Details JBS&G Australia Pty Ltd T/A Strategen JBS&G	
I hereby certify that I have undertaken the assessment of the above site and determined the Bushfire Attack Level stated above in accordance with the requirements of AS 3959-2018.	

Authorised Practitioner Stamp

Reliance on the assessment and determination of the Bushfire Attack Level contained in this certificate should not extend beyond a period of 12 months from the date of issue of the certificate. If this certificate was issued more than 12 months ago, it is recommended that the validity of the determination be confirmed with the Accredited Practitioner and where required an updated certificate issued.

Bushfire Attack Level (BAL) Certificate

Determined in accordance with AS 3959-2018

This Certificate has been issued by a person accredited by Fire Protection Association Australia under the Bushfire Planning and Design (BPAD) Accreditation Scheme. The certificate details the conclusions of the full Bushfire Attack Level Assessment Report (full report) prepared by the Accredited Practitioner.

Property Details and Description of Works

Address Details	Unit no	Street no	Lot no	Street name / Plan Reference		
			1381	Idalia Way		
Local government area	Suburb			State		Postcode
	Yanchep			WA		6035
Main BCA class of the building	City of Wanneroo					
Description of the building or works	Class 1a	Use(s) of the building	Residential dwelling			
	Construction of a single Class 1a building and associated Class 10a building/s					

Determination of Highest Bushfire Attack Level

AS 3959 Assessment Procedure	Vegetation Classification	Effective Slope	Separation Distance	BAL
Method 1	Class D Scrub	Flat/upslope (0°)	30m	BAL - 12.5

BPAD Accredited Practitioner Details

Name Zac Cockerill	<div style="border: 1px solid black; padding: 5px;"> <p>I hereby declare that I am a BPAD accredited bushfire practitioner.</p> <p>Accreditation No. <u>37803</u></p> <p>Signature <u>[Signature]</u></p> <p>Date <u>8/9/21</u></p> </div>
Company Details JBS&G Australia Pty Ltd T/A Strategen JBS&G	
I hereby certify that I have undertaken the assessment of the above site and determined the Bushfire Attack Level stated above in accordance with the requirements of AS 3959-2018.	

Authorised Practitioner Stamp

Reliance on the assessment and determination of the Bushfire Attack Level contained in this certificate should not extend beyond a period of 12 months from the date of issue of the certificate. If this certificate was issued more than 12 months ago, it is recommended that the validity of the determination be confirmed with the Accredited Practitioner and where required an updated certificate issued.

Bushfire Attack Level (BAL) Certificate

Determined in accordance with AS 3959-2018

This Certificate has been issued by a person accredited by Fire Protection Association Australia under the Bushfire Planning and Design (BPAD) Accreditation Scheme. The certificate details the conclusions of the full Bushfire Attack Level Assessment Report (full report) prepared by the Accredited Practitioner.

Property Details and Description of Works

Address Details	Unit no	Street no	Lot no	Street name / Plan Reference		
			1382	Idalia Way		
Local government area	Suburb			State	Postcode	
	Yanchep			WA	6035	
Main BCA class of the building	City of Wanneroo					
	Class 1a	Use(s) of the building		Residential dwelling		
Description of the building or works	Construction of a single Class 1a building and associated Class 10a building/s					

Determination of Highest Bushfire Attack Level

AS 3959 Assessment Procedure	Vegetation Classification	Effective Slope	Separation Distance	BAL
Method 1	Class D Scrub	Flat/upslope (0°)	43m	BAL - 12.5

BPAD Accredited Practitioner Details

Name Zac Cockerill	<div style="border: 1px solid black; padding: 5px;"> <p>I hereby declare that I am a BPAD accredited bushfire practitioner.</p> <p>Accreditation No. <u>37803</u></p> <p>Signature <u>[Signature]</u></p> <p>Date <u>8/9/21</u></p> </div>
Company Details JBS&G Australia Pty Ltd T/A Strategen JBS&G	
I hereby certify that I have undertaken the assessment of the above site and determined the Bushfire Attack Level stated above in accordance with the requirements of AS 3959-2018.	

Authorised Practitioner Stamp

Reliance on the assessment and determination of the Bushfire Attack Level contained in this certificate should not extend beyond a period of 12 months from the date of issue of the certificate. If this certificate was issued more than 12 months ago, it is recommended that the validity of the determination be confirmed with the Accredited Practitioner and where required an updated certificate issued.

Bushfire Attack Level (BAL) Certificate

Determined in accordance with AS 3959-2018

This Certificate has been issued by a person accredited by Fire Protection Association Australia under the Bushfire Planning and Design (BPAD) Accreditation Scheme. The certificate details the conclusions of the full Bushfire Attack Level Assessment Report (full report) prepared by the Accredited Practitioner.


Property Details and Description of Works

Address Details	Unit no	Street no	Lot no	Street name / Plan Reference		
			1383	Idalia Way		
Local government area	Suburb			State	Postcode	
	Yanchep			WA	6035	
Main BCA class of the building	City of Wanneroo					
Description of the building or works	Class 1a	Use(s) of the building	Residential dwelling			
	Construction of a single Class 1a building and associated Class 10a building/s					

Determination of Highest Bushfire Attack Level

AS 3959 Assessment Procedure	Vegetation Classification	Effective Slope	Separation Distance	BAL
Method 1	Class D Scrub	Flat/upslope (0°)	55m	BAL - 12.5

BPAD Accredited Practitioner Details

Name Zac Cockerill	<div style="border: 1px solid black; padding: 10px;"> <p>I hereby declare that I am a BPAD accredited bushfire practitioner.</p> <p>Accreditation No. <u>37803</u></p> <p>Signature <u>[Signature]</u></p> <p>Date <u>8/9/21</u></p> </div> 
Company Details JBS&G Australia Pty Ltd T/A Strategen JBS&G	
I hereby certify that I have undertaken the assessment of the above site and determined the Bushfire Attack Level stated above in accordance with the requirements of AS 3959-2018.	

Reliance on the assessment and determination of the Bushfire Attack Level contained in this certificate should not extend beyond a period of 12 months from the date of issue of the certificate. If this certificate was issued more than 12 months ago, it is recommended that the validity of the determination be confirmed with the Accredited Practitioner and where required an updated certificate issued.

Bushfire Attack Level (BAL) Certificate

Determined in accordance with AS 3959-2018

This Certificate has been issued by a person accredited by Fire Protection Association Australia under the Bushfire Planning and Design (BPAD) Accreditation Scheme. The certificate details the conclusions of the full Bushfire Attack Level Assessment Report (full report) prepared by the Accredited Practitioner.

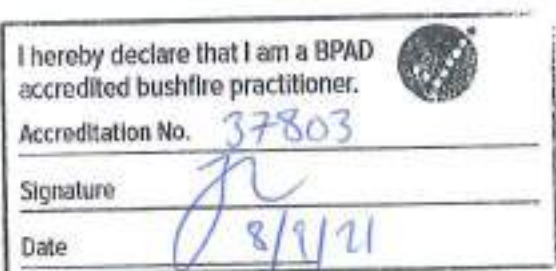
Property Details and Description of Works

Address Details	Unit no	Street no	Lot no	Street name / Plan Reference	
			1385	Idalia Way	
Local government area	Suburb			State	Postcode
	Yanchep			WA	6035
Main BCA class of the building	City of Wanneroo				
Description of the building or works	Class 1a	Use(s) of the building	Residential dwelling		
	Construction of a single Class 1a building and associated Class 10a building/s				

Determination of Highest Bushfire Attack Level

AS 3959 Assessment Procedure	Vegetation Classification	Effective Slope	Separation Distance	BAL
Method 1	Class D Scrub	Flat/upslope (0°)	33m	BAL - 12.5

BPAD Accredited Practitioner Details

Name Zac Cockerill	 <p>I hereby declare that I am a BPAD accredited bushfire practitioner.</p> <p>Accreditation No. 37803</p> <p>Signature <i>[Signature]</i></p> <p>Date 8/9/21</p>
Company Details JBS&G Australia Pty Ltd T/A Strategen JBS&G	
I hereby certify that I have undertaken the assessment of the above site and determined the Bushfire Attack Level stated above in accordance with the requirements of AS 3959-2018.	

Authorised Practitioner Stamp

Reliance on the assessment and determination of the Bushfire Attack Level contained in this certificate should not extend beyond a period of 12 months from the date of issue of the certificate. If this certificate was issued more than 12 months ago, it is recommended that the validity of the determination be confirmed with the Accredited Practitioner and where required an updated certificate issued.

Bushfire Attack Level (BAL) Certificate

Determined in accordance with AS 3959-2018

This Certificate has been issued by a person accredited by Fire Protection Association Australia under the Bushfire Planning and Design (BPAD) Accreditation Scheme. The certificate details the conclusions of the full Bushfire Attack Level Assessment Report (full report) prepared by the Accredited Practitioner.

Property Details and Description of Works

Address Details	Unit no	Street no	Lot no	Street name / Plan Reference		
			1386	Idalia Way		
Local government area	Suburb			State		Postcode
	Yanchep			WA		6035
Main BCA class of the building	City of Wanneroo					
Description of the building or works	Class 1a	Use(s) of the building	Residential dwelling			
	Construction of a single Class 1a building and associated Class 10a building/s					

Determination of Highest Bushfire Attack Level

AS 3959 Assessment Procedure	Vegetation Classification	Effective Slope	Separation Distance	BAL
Method 1	Class D Scrub	Flat/upslope (0°)	15m (lower BAL achievable with setback)	BAL - 29

BPAD Accredited Practitioner Details

Name Zac Cockerill	<div data-bbox="774 1518 1332 1787" data-label="Form"> <p>I hereby declare that I am a BPAD accredited bushfire practitioner.</p> <p>Accreditation No. <u>37803</u></p> <p>Signature <u>[Signature]</u></p> <p>Date <u>8/9/21</u></p> </div>
Company Details JBS&G Australia Pty Ltd T/A Strategen JBS&G	
I hereby certify that I have undertaken the assessment of the above site and determined the Bushfire Attack Level stated above in accordance with the requirements of AS 3959-2018.	

Authorised Practitioner Stamp

Reliance on the assessment and determination of the Bushfire Attack Level contained in this certificate should not extend beyond a period of 12 months from the date of issue of the certificate. If this certificate was issued more than 12 months ago, it is recommended that the validity of the determination be confirmed with the Accredited Practitioner and where required an updated certificate issued.

Bushfire Attack Level (BAL) Certificate

Determined in accordance with AS 3959-2018

This Certificate has been issued by a person accredited by Fire Protection Association Australia under the Bushfire Planning and Design (BPAD) Accreditation Scheme. The certificate details the conclusions of the full Bushfire Attack Level Assessment Report (full report) prepared by the Accredited Practitioner.

Property Details and Description of Works

Address Details	Unit no	Street no	Lot no	Street name / Plan Reference		
			1387	Idalia Way		
Local government area	Suburb			State	Postcode	
	Yanchep			WA	6035	
Main BCA class of the building	City of Wanneroo					
Description of the building or works	Class 1a	Use(s) of the building		Residential dwelling		
	Construction of a single Class 1a building and associated Class 10a building/s					

Determination of Highest Bushfire Attack Level

AS 3959 Assessment Procedure	Vegetation Classification	Effective Slope	Separation Distance	BAL
Method 1	Class D Scrub	Flat/upslope (0°)	15m (lower BAL achievable with setback)	BAL – 29

BPAD Accredited Practitioner Details

Name Zac Cockerill Company Details JBS&G Australia Pty Ltd T/A Strategen JBS&G I hereby certify that I have undertaken the assessment of the above site and determined the Bushfire Attack Level stated above in accordance with the requirements of AS 3959-2018.	<div style="border: 1px solid black; padding: 5px;"> <p>I hereby declare that I am a BPAD accredited bushfire practitioner.</p> <p>Accreditation No. 37803</p> <p>Signature </p> <p>Date 8/9/21</p> </div> <p style="text-align: right; font-size: small;">Authorised Practitioner Stamp</p>
--	--

Reliance on the assessment and determination of the Bushfire Attack Level contained in this certificate should not extend beyond a period of 12 months from the date of issue of the certificate. If this certificate was issued more than 12 months ago, it is recommended that the validity of the determination be confirmed with the Accredited Practitioner and where required an updated certificate issued.

Bushfire Attack Level (BAL) Certificate

Determined in accordance with AS 3959-2018

This Certificate has been issued by a person accredited by Fire Protection Association Australia under the Bushfire Planning and Design (BPAD) Accreditation Scheme. The certificate details the conclusions of the full Bushfire Attack Level Assessment Report (full report) prepared by the Accredited Practitioner.

Property Details and Description of Works

Address Details	Unit no	Street no	Lot no	Street name / Plan Reference		
			1388	Idalia Way		
Local government area	Suburb			State	Postcode	
	Yanchep			WA	6035	
Main BCA class of the building	City of Wanneroo					
Description of the building or works	Class 1a	Use(s) of the building	Residential dwelling			
	Construction of a single Class 1a building and associated Class 10a building/s					

Determination of Highest Bushfire Attack Level

AS 3959 Assessment Procedure	Vegetation Classification	Effective Slope	Separation Distance	BAL
Method 1	Class D Scrub	Flat/upslope (0°)	18m (lower BAL achievable with setback)	BAL - 29

BPAD Accredited Practitioner Details

Name Zac Cockerill	<div style="border: 1px solid black; padding: 10px;"> <p>I hereby declare that I am a BPAD accredited bushfire practitioner.</p> <p>Accreditation No. <u>37803</u></p> <p>Signature <u>[Signature]</u></p> <p>Date <u>8/9/21</u></p> </div>
Company Details JBS&G Australia Pty Ltd T/A Strategen JBS&G	
I hereby certify that I have undertaken the assessment of the above site and determined the Bushfire Attack Level stated above in accordance with the requirements of AS 3959-2018.	

Authorised Practitioner Stamp

Reliance on the assessment and determination of the Bushfire Attack Level contained in this certificate should not extend beyond a period of 12 months from the date of issue of the certificate. If this certificate was issued more than 12 months ago, it is recommended that the validity of the determination be confirmed with the Accredited Practitioner and where required an updated certificate issued.

Bushfire Attack Level (BAL) Certificate

Determined in accordance with AS 3959-2018

This Certificate has been issued by a person accredited by Fire Protection Association Australia under the Bushfire Planning and Design (BPAD) Accreditation Scheme. The certificate details the conclusions of the full Bushfire Attack Level Assessment Report (full report) prepared by the Accredited Practitioner.

Property Details and Description of Works

Address Details	Unit no	Street no	Lot no	Street name / Plan Reference		
			1389	Abercombe Avenue		
Local government area	Suburb			State	Postcode	
	Yanchep			WA	6035	
Main BCA class of the building	City of Wanneroo					
Description of the building or works	Class 1a	Use(s) of the building	Residential dwelling			
	Construction of a single Class 1a building and associated Class 10a building/s					

Determination of Highest Bushfire Attack Level

AS 3959 Assessment Procedure	Vegetation Classification	Effective Slope	Separation Distance	BAL
Method 1	Class D Scrub	Flat/upslope (0°)	40m	BAL - 12.5

BPAD Accredited Practitioner Details

Name Zac Cockerill	<div> <p>I hereby declare that I am a BPAD accredited bushfire practitioner.</p> <p>Accreditation No. 37803</p> <p>Signature </p> <p>Date 8/9/21</p> </div>
Company Details JBS&G Australia Pty Ltd T/A Strategen JBS&G	
I hereby certify that I have undertaken the assessment of the above site and determined the Bushfire Attack Level stated above in accordance with the requirements of AS 3959-2018.	

Authorised Practitioner Stamp

Reliance on the assessment and determination of the Bushfire Attack Level contained in this certificate should not extend beyond a period of 12 months from the date of issue of the certificate. If this certificate was issued more than 12 months ago, it is recommended that the validity of the determination be confirmed with the Accredited Practitioner and where required an updated certificate issued.

Bushfire Attack Level (BAL) Certificate

Determined in accordance with AS 3959-2018

This Certificate has been issued by a person accredited by Fire Protection Association Australia under the Bushfire Planning and Design (BPAD) Accreditation Scheme. The certificate details the conclusions of the full Bushfire Attack Level Assessment Report (full report) prepared by the Accredited Practitioner.


Property Details and Description of Works

Address Details	Unit no	Street no	Lot no	Street name / Plan Reference		
			1390	Abercombic Avenue		
Local government area	Suburb			State		Postcode
	Yanchep			WA		6035
Main BCA class of the building	City of Wanneroo					
Description of the building or works	Class 1a	Use(s) of the building	Residential dwelling			
	Construction of a single Class 1a building and associated Class 10a building/s					

Determination of Highest Bushfire Attack Level

AS 3959 Assessment Procedure	Vegetation Classification	Effective Slope	Separation Distance	BAL
Method 1	Class D Scrub	Flat/upslope (0°)	53m	BAL - 12.5

BPAD Accredited Practitioner Details

Name Zac Cockerill	 <p>I hereby declare that I am a BPAD accredited bushfire practitioner.</p> <p>Accreditation No. <u>37803</u></p> <p>Signature <u>[Signature]</u></p> <p>Date <u>8/9/21</u></p>
Company Details JBS&G Australia Pty Ltd T/A Strategen JBS&G	
I hereby certify that I have undertaken the assessment of the above site and determined the Bushfire Attack Level stated above in accordance with the requirements of AS 3959-2018.	

Authorised Practitioner Stamp

Reliance on the assessment and determination of the Bushfire Attack Level contained in this certificate should not extend beyond a period of 12 months from the date of issue of the certificate. If this certificate was issued more than 12 months ago, it is recommended that the validity of the determination be confirmed with the Accredited Practitioner and where required an updated certificate issued.

Bushfire Attack Level (BAL) Certificate

Determined in accordance with AS 3959-2018

This Certificate has been issued by a person accredited by Fire Protection Association Australia under the Bushfire Planning and Design (BPAD) Accreditation Scheme. The certificate details the conclusions of the full Bushfire Attack Level Assessment Report (full report) prepared by the Accredited Practitioner.

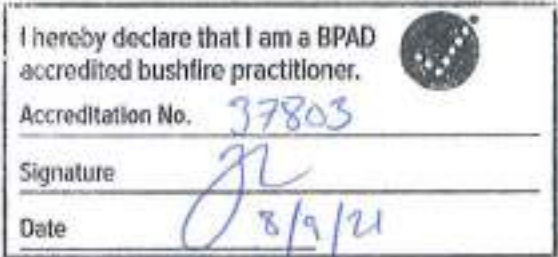
Property Details and Description of Works

Address Details	Unit no	Street no	Lot no	Street name / Plan Reference		
			1391	Abercombe Avenue		
Local government area	Suburb			State	Postcode	
	Yanchep			WA	6035	
Main BCA class of the building	City of Wanneroo					
Description of the building or works	Class 1a	Use(s) of the building	Residential dwelling			
	Construction of a single Class 1a building and associated Class 10a building/s					

Determination of Highest Bushfire Attack Level

AS 3959 Assessment Procedure	Vegetation Classification	Effective Slope	Separation Distance	BAL
Method 1	Class D Scrub	Flat/upslope (0°)	27m	BAL - 12.5

BPAD Accredited Practitioner Details

<p>Name Zac Cockerill</p>	 <p>I hereby declare that I am a BPAD accredited bushfire practitioner.</p> <p>Accreditation No. <u>37803</u></p> <p>Signature <u>[Signature]</u></p> <p>Date <u>8/9/21</u></p>
<p>Company Details JBS&G Australia Pty Ltd T/A Strategen JBS&G</p>	
<p>I hereby certify that I have undertaken the assessment of the above site and determined the Bushfire Attack Level stated above in accordance with the requirements of AS 3959-2018.</p>	

Authorised Practitioner Stamp

Reliance on the assessment and determination of the Bushfire Attack Level contained in this certificate should not extend beyond a period of 12 months from the date of issue of the certificate. If this certificate was issued more than 12 months ago, it is recommended that the validity of the determination be confirmed with the Accredited Practitioner and where required an updated certificate issued.

Bushfire Attack Level (BAL) Certificate

Determined in accordance with AS 3959-2018

This Certificate has been issued by a person accredited by Fire Protection Association Australia under the Bushfire Planning and Design (BPAD) Accreditation Scheme. The certificate details the conclusions of the full Bushfire Attack Level Assessment Report (full report) prepared by the Accredited Practitioner.

Property Details and Description of Works

Address Details	Unit no	Street no	Lot no	Street name / Plan Reference		
			1392	Abercombe Avenue		
	Suburb			State	Postcode	
	Yanchep			WA	6035	
Local government area	City of Wanneroo					
Main BCA class of the building	Class 1a	Use(s) of the building		Residential dwelling		
Description of the building or works	Construction of a single Class 1a building and associated Class 10a building/s					

Determination of Highest Bushfire Attack Level

AS 3959 Assessment Procedure	Vegetation Classification	Effective Slope	Separation Distance	BAL
Method 1	Class D Scrub	Flat/upslope (0°)	26m (lower BAL achievable with setback)	BAL - 19

BPAD Accredited Practitioner Details

Name Zac Cockerill	<div style="border: 1px solid black; padding: 10px;"> <p>I hereby declare that I am a BPAD accredited bushfire practitioner.</p> <p>Accreditation No. <u>37903</u></p> <p>Signature <u>[Signature]</u></p> <p>Date <u>8/9/21</u></p> </div>
Company Details JBS&G Australia Pty Ltd T/A Strategen JBS&G	
I hereby certify that I have undertaken the assessment of the above site and determined the Bushfire Attack Level stated above in accordance with the requirements of AS 3959-2018.	

Authorised Practitioner Stamp

Reliance on the assessment and determination of the Bushfire Attack Level contained in this certificate should not extend beyond a period of 12 months from the date of issue of the certificate. If this certificate was issued more than 12 months ago, it is recommended that the validity of the determination be confirmed with the Accredited Practitioner and where required an updated certificate issued.

Bushfire Attack Level (BAL) Certificate

Determined in accordance with AS 3959-2018

This Certificate has been issued by a person accredited by Fire Protection Association Australia under the Bushfire Planning and Design (BPAD) Accreditation Scheme. The certificate details the conclusions of the full Bushfire Attack Level Assessment Report (full report) prepared by the Accredited Practitioner.

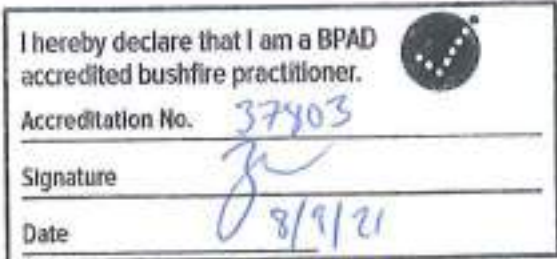
Property Details and Description of Works

Address Details	Unit no	Street no	Lot no	Street name / Plan Reference		
			1393	Abercombe Avenue		
Local government area	Suburb			State	Postcode	
	Yanchep			WA	6035	
Main BCA class of the building	City of Wanneroo					
Description of the building or works	Class 1a	Use(s) of the building	Residential dwelling			
	Construction of a single Class 1a building and associated Class 10a building/s					

Determination of Highest Bushfire Attack Level

AS 3959 Assessment Procedure	Vegetation Classification	Effective Slope	Separation Distance	BAL
Method 1	Class D Scrub	Flat/upslope (0°)	23m (lower BAL achievable with setback)	BAL - 19

BPAD Accredited Practitioner Details

Name Zac Cockerill	<div>  <p>I hereby declare that I am a BPAD accredited bushfire practitioner.</p> <p>Accreditation No. 37403</p> <p>Signature [Signature]</p> <p>Date 8/9/21</p> </div>
Company Details JBS&G Australia Pty Ltd T/A Strategen JBS&G	
I hereby certify that I have undertaken the assessment of the above site and determined the Bushfire Attack Level stated above in accordance with the requirements of AS 3959-2018.	

Authorised Practitioner Stamp

Reliance on the assessment and determination of the Bushfire Attack Level contained in this certificate should not extend beyond a period of 12 months from the date of issue of the certificate. If this certificate was issued more than 12 months ago, it is recommended that the validity of the determination be confirmed with the Accredited Practitioner and where required an updated certificate issued.

Bushfire Attack Level (BAL) Certificate

Determined in accordance with AS 3959-2018

This Certificate has been issued by a person accredited by Fire Protection Association Australia under the Bushfire Planning and Design (BPAD) Accreditation Scheme. The certificate details the conclusions of the full Bushfire Attack Level Assessment Report (full report) prepared by the Accredited Practitioner.

Property Details and Description of Works

Address Details	Unit no	Street no	Lot no	Street name / Plan Reference		
			1394	Abercombe Avenue		
Local government area	Suburb			State	Postcode	
	Yanchep			WA	6035	
Main BCA class of the building	City of Wanneroo					
Description of the building or works	Class 1a	Use(s) of the building	Residential dwelling			
	Construction of a single Class 1a building and associated Class 10a building/s					

Determination of Highest Bushfire Attack Level

AS 3959 Assessment Procedure	Vegetation Classification	Effective Slope	Separation Distance	BAL
Method 1	Class D Scrub	Flat/upslope (0°)	22m (lower BAL achievable with setback)	BAL – 19

BPAD Accredited Practitioner Details

Name Zac Cockerill	<div style="border: 1px solid black; padding: 5px;"> <p>I hereby declare that I am a BPAD accredited bushfire practitioner.</p> <p>Accreditation No. <u>37803</u></p> <p>Signature <u>[Signature]</u></p> <p>Date <u>8/9/21</u></p> </div>
Company Details JBS&G Australia Pty Ltd T/A Strategen JBS&G	
I hereby certify that I have undertaken the assessment of the above site and determined the Bushfire Attack Level stated above in accordance with the requirements of AS 3959-2018.	

Authorised Practitioner Stamp

Reliance on the assessment and determination of the Bushfire Attack Level contained in this certificate should not extend beyond a period of 12 months from the date of issue of the certificate. If this certificate was issued more than 12 months ago, it is recommended that the validity of the determination be confirmed with the Accredited Practitioner and where required an updated certificate issued.

Bushfire Attack Level (BAL) Certificate

Determined in accordance with AS 3959-2018

This Certificate has been issued by a person accredited by Fire Protection Association Australia under the Bushfire Planning and Design (BPAD) Accreditation Scheme. The certificate details the conclusions of the full Bushfire Attack Level Assessment Report (full report) prepared by the Accredited Practitioner.

Property Details and Description of Works

Address Details	Unit no	Street no	Lot no	Street name / Plan Reference		
			1395	Abercombe Avenue		
Local government area	Suburb			State	Postcode	
	Yanchep			WA	6035	
	City of Wanneroo					
Main BCA class of the building	Class 1a	Use(s) of the building	Residential dwelling			
Description of the building or works	Construction of a single Class 1a building and associated Class 10a building/s					

Determination of Highest Bushfire Attack Level

AS 3959 Assessment Procedure	Vegetation Classification	Effective Slope	Separation Distance	BAL
Method 1	Class D Scrub	Flat/upslope (0°)	22m (lower BAL achievable with setback)	BAL - 19

BPAD Accredited Practitioner Details

Name Zac Cockerill	<div style="border: 1px solid black; padding: 10px;"> <p>I hereby declare that I am a BPAD accredited bushfire practitioner.</p> <p>Accreditation No. <u>37803</u></p> <p>Signature <u>[Signature]</u></p> <p>Date <u>8/9/21</u></p> </div>
Company Details JBS&G Australia Pty Ltd T/A Strategen JBS&G	
I hereby certify that I have undertaken the assessment of the above site and determined the Bushfire Attack Level stated above in accordance with the requirements of AS 3959-2018.	

Authorised Practitioner Stamp

Reliance on the assessment and determination of the Bushfire Attack Level contained in this certificate should not extend beyond a period of 12 months from the date of issue of the certificate. If this certificate was issued more than 12 months ago, it is recommended that the validity of the determination be confirmed with the Accredited Practitioner and where required an updated certificate issued.

Bushfire Attack Level (BAL) Certificate

Determined in accordance with AS 3959-2018

This Certificate has been issued by a person accredited by Fire Protection Association Australia under the Bushfire Planning and Design (BPAD) Accreditation Scheme. The certificate details the conclusions of the full Bushfire Attack Level Assessment Report (full report) prepared by the Accredited Practitioner.

Property Details and Description of Works

Address Details	Unit no	Street no	Lot no	Street name / Plan Reference		
			1396	Abercombe Avenue		
Local government area	Suburb			State	Postcode	
	Yanchep			WA	6035	
Main BCA class of the building	City of Wanneroo					
Description of the building or works	Class 1a	Use(s) of the building	Residential dwelling			
	Construction of a single Class 1a building and associated Class 10a building/s					

Determination of Highest Bushfire Attack Level

AS 3959 Assessment Procedure	Vegetation Classification	Effective Slope	Separation Distance	BAL
Method 1	Class D Scrub	Flat/upslope (0°)	21m (lower BAL achievable with setback)	BAL – 19

BPAD Accredited Practitioner Details

Name Zac Cockerill	 <p>I hereby declare that I am a BPAD accredited bushfire practitioner.</p> <p>Accreditation No. <u>37803</u></p> <p>Signature <u>[Signature]</u></p> <p>Date <u>08/1/21</u></p>
Company Details JBS&G Australia Pty Ltd T/A Strategen JBS&G	
I hereby certify that I have undertaken the assessment of the above site and determined the Bushfire Attack Level stated above in accordance with the requirements of AS 3959-2018.	

Authorised Practitioner Stamp

Reliance on the assessment and determination of the Bushfire Attack Level contained in this certificate should not extend beyond a period of 12 months from the date of issue of the certificate. If this certificate was issued more than 12 months ago, it is recommended that the validity of the determination be confirmed with the Accredited Practitioner and where required an updated certificate issued.

Bushfire Attack Level (BAL) Certificate

Determined in accordance with AS 3959-2018

This Certificate has been issued by a person accredited by Fire Protection Association Australia under the Bushfire Planning and Design (BPAD) Accreditation Scheme. The certificate details the conclusions of the full Bushfire Attack Level Assessment Report (full report) prepared by the Accredited Practitioner.

Property Details and Description of Works

Address Details	Unit no	Street no	Lot no	Street name / Plan Reference		
			1401	Abercombe Avenue		
Local government area	Suburb			State	Postcode	
	Yanchep			WA	6035	
Main BCA class of the building	City of Wanneroo					
Description of the building or works	Class 1a	Use(s) of the building	Residential dwelling			
	Construction of a single Class 1a building and associated Class 10a building/s					

Determination of Highest Bushfire Attack Level

AS 3959 Assessment Procedure	Vegetation Classification	Effective Slope	Separation Distance	BAL
Method 1	Class D Scrub	Flat/upslope (0°)	21m (lower BAL achievable with setback)	BAL – 19

BPAD Accredited Practitioner Details

Name Zac Cockerill	<div style="border: 1px solid black; padding: 5px;"> <p>I hereby declare that I am a BPAD accredited bushfire practitioner.</p> <p>Accreditation No. <u>37203</u></p> <p>Signature <u>[Signature]</u></p> <p>Date <u>8/9/21</u></p> </div>
Company Details JBS&G Australia Pty Ltd T/A Strategen JBS&G	
I hereby certify that I have undertaken the assessment of the above site and determined the Bushfire Attack Level stated above in accordance with the requirements of AS 3959-2018.	

Authorised Practitioner Stamp

Reliance on the assessment and determination of the Bushfire Attack Level contained in this certificate should not extend beyond a period of 12 months from the date of issue of the certificate. If this certificate was issued more than 12 months ago, it is recommended that the validity of the determination be confirmed with the Accredited Practitioner and where required an updated certificate issued.

Bushfire Attack Level (BAL) Certificate

Determined in accordance with AS 3959-2018

This Certificate has been issued by a person accredited by Fire Protection Association Australia under the Bushfire Planning and Design (BPAD) Accreditation Scheme. The certificate details the conclusions of the full Bushfire Attack Level Assessment Report (full report) prepared by the Accredited Practitioner.

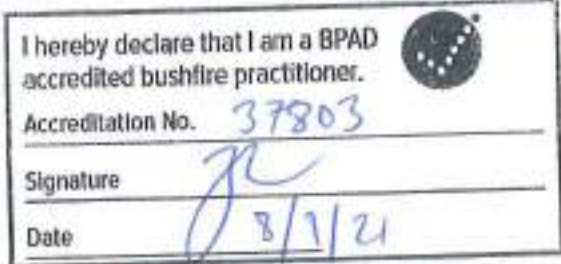
Property Details and Description of Works

Address Details	Unit no	Street no	Lot no	Street name / Plan Reference		
			1402	Abercombe Avenue		
Local government area	Suburb			State	Postcode	
	Yanchep			WA	6035	
Main BCA class of the building	City of Wanneroo					
Description of the building or works	Class 1a	Use(s) of the building	Residential dwelling			
	Construction of a single Class 1a building and associated Class 10a building/s					

Determination of Highest Bushfire Attack Level

AS 3959 Assessment Procedure	Vegetation Classification	Effective Slope	Separation Distance	BAL
Method 1	Class D Scrub	Flat/upslope (0°)	26m (lower BAL achievable with setback)	BAL - 19

BPAD Accredited Practitioner Details

Name Zac Cockerill	 <p>I hereby declare that I am a BPAD accredited bushfire practitioner.</p> <p>Accreditation No. <u>37803</u></p> <p>Signature <u>[Signature]</u></p> <p>Date <u>8/1/21</u></p>
Company Details JBS&G Australia Pty Ltd T/A Strategen JBS&G	
I hereby certify that I have undertaken the assessment of the above site and determined the Bushfire Attack Level stated above in accordance with the requirements of AS 3959-2018.	

Authorised Practitioner Stamp

Reliance on the assessment and determination of the Bushfire Attack Level contained in this certificate should not extend beyond a period of 12 months from the date of issue of the certificate. If this certificate was issued more than 12 months ago, it is recommended that the validity of the determination be confirmed with the Accredited Practitioner and where required an updated certificate issued.

Bushfire Attack Level (BAL) Certificate

Determined in accordance with AS 3959-2018

This Certificate has been issued by a person accredited by Fire Protection Association Australia under the Bushfire Planning and Design (BPAD) Accreditation Scheme. The certificate details the conclusions of the full Bushfire Attack Level Assessment Report (full report) prepared by the Accredited Practitioner.


Property Details and Description of Works

Address Details	Unit no	Street no	Lot no	Street name / Plan Reference		
			1404	Abercombe Avenue		
Local government area	Suburb			State	Postcode	
	Yanchep			WA	6035	
Main BCA class of the building	City of Wanneroo					
Description of the building or works	Class 1a	Use(s) of the building	Residential dwelling			
	Construction of a single Class 1a building and associated Class 10a building/s					

Determination of Highest Bushfire Attack Level

AS 3959 Assessment Procedure	Vegetation Classification	Effective Slope	Separation Distance	BAL
Method 1	Class D Scrub	Flat/upslope (0°)	37m	BAL - 12.5

BPAD Accredited Practitioner Details

Name Zac Cockerill	 <p>I hereby declare that I am a BPAD accredited bushfire practitioner.</p> <p>Accreditation No. <u>37803</u></p> <p>Signature <u>[Signature]</u></p> <p>Date <u>08/1/21</u></p>
Company Details JBS&G Australia Pty Ltd T/A Strategen JBS&G	
I hereby certify that I have undertaken the assessment of the above site and determined the Bushfire Attack Level stated above in accordance with the requirements of AS 3959-2018.	

Authorised Practitioner Stamp

Relevance to the assessment and determination of the Bushfire Attack Level contained in this certificate should not extend beyond a period of 12 months from the date of issue of the certificate. If this certificate was issued more than 12 months ago, it is recommended that the validity of the determination be confirmed with the Accredited Practitioner and where required an updated certificate issued.

Bushfire Attack Level (BAL) Certificate

Determined in accordance with AS 3959-2018

This Certificate has been issued by a person accredited by Fire Protection Association Australia under the Bushfire Planning and Design (BPAD) Accreditation Scheme. The certificate details the conclusions of the full Bushfire Attack Level Assessment Report (full report) prepared by the Accredited Practitioner.

Property Details and Description of Works

Address Details	Unit no	Street no	Lot no	Street name / Plan Reference		
			1405	Abercombe Avenue		
Local government area	Suburb			State	Postcode	
	Yanchep			WA	6035	
Main BCA class of the building	City of Wanneroo					
Description of the building or works	Class 1a	Use(s) of the building	Residential dwelling			
	Construction of a single Class 1a building and associated Class 10a building/s					

Determination of Highest Bushfire Attack Level

AS 3959 Assessment Procedure	Vegetation Classification	Effective Slope	Separation Distance	BAL
Method 1	Class D Scrub	Flat/upslope (0°)	32m	BAL - 12.5

BPAD Accredited Practitioner Details

Name Zac Cockerill	<div> <p>I hereby declare that I am a BPAD accredited bushfire practitioner.</p> <p>Accreditation No. <u>37903</u></p> <p>Signature <u>[Signature]</u></p> <p>Date <u>8/9/21</u></p> </div>
Company Details JBS&G Australia Pty Ltd T/A Strategen JBS&G	
I hereby certify that I have undertaken the assessment of the above site and determined the Bushfire Attack Level stated above in accordance with the requirements of AS 3959-2018.	

Authorised Practitioner Stamp

Reliance on the assessment and determination of the Bushfire Attack Level contained in this certificate should not extend beyond a period of 12 months from the date of issue of the certificate. If this certificate was issued more than 12 months ago, it is recommended that the validity of the determination be confirmed with the Accredited Practitioner and where required an updated certificate issued.

Bushfire Attack Level (BAL) Certificate

Determined in accordance with AS 3959-2018

This Certificate has been issued by a person accredited by Fire Protection Association Australia under the Bushfire Planning and Design (BPAD) Accreditation Scheme. The certificate details the conclusions of the full Bushfire Attack Level Assessment Report (full report) prepared by the Accredited Practitioner.

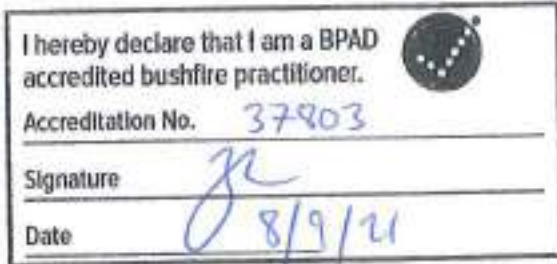
Property Details and Description of Works

Address Details	Unit no	Street no	Lot no	Street name / Plan Reference		
			1406	Bundjalung Rise		
Local government area	Suburb			State	Postcode	
	Yanchep			WA	6035	
Main BCA class of the building	City of Wanneroo					
Description of the building or works	Class 1a	Use(s) of the building	Residential dwelling			
	Construction of a single Class 1a building and associated Class 10a building/s					

Determination of Highest Bushfire Attack Level

AS 3959 Assessment Procedure	Vegetation Classification	Effective Slope	Separation Distance	BAL
Method 1	Class D Scrub	Flat/upslope (0°)	24m (lower BAL achievable with setback)	BAL – 19

BPAD Accredited Practitioner Details

Name Zac Cockerill	 <p>I hereby declare that I am a BPAD accredited bushfire practitioner.</p> <p>Accreditation No. 37803</p> <p>Signature <i>[Signature]</i></p> <p>Date 8/9/21</p>
Company Details JBS&G Australia Pty Ltd T/A Strategen JBS&G	
I hereby certify that I have undertaken the assessment of the above site and determined the Bushfire Attack Level stated above in accordance with the requirements of AS 3959-2018.	

Authorized Practitioner Stamp

Reliance on the assessment and determination of the Bushfire Attack Level contained in this certificate should not extend beyond a period of 12 months from the date of issue of the certificate. If this certificate was issued more than 12 months ago, it is recommended that the validity of the determination be confirmed with the Accredited Practitioner and where required an updated certificate issued.

Bushfire Attack Level (BAL) Certificate

Determined in accordance with AS 3959-2018

This Certificate has been issued by a person accredited by Fire Protection Association Australia under the Bushfire Planning and Design (BPAD) Accreditation Scheme. The certificate details the conclusions of the full Bushfire Attack Level Assessment Report (full report) prepared by the Accredited Practitioner.

Property Details and Description of Works

Address Details	Unit no	Street no	Lot no	Street name / Plan Reference		
			1407	Bundjalung Rise		
Local government area	Suburb			State	Postcode	
	Yanchep			WA	6035	
Main BCA class of the building	City of Wanneroo					
Description of the building or works	Class 1a	Use(s) of the building	Residential dwelling			
	Construction of a single Class 1a building and associated Class 10a building/s					

Determination of Highest Bushfire Attack Level

AS 3959 Assessment Procedure	Vegetation Classification	Effective Slope	Separation Distance	BAL
Method 1	Class D Scrub	Flat/upslope (0°)	38m	BAL - 12.5

BPAD Accredited Practitioner Details

Name Zac Cockerill	<div style="border: 1px solid black; padding: 5px;"> <p>I hereby declare that I am a BPAD accredited bushfire practitioner.</p> <p>Accreditation No. <u>37803</u></p> <p>Signature <u>[Signature]</u></p> <p>Date <u>8/9/21</u></p> </div>
Company Details JBS&G Australia Pty Ltd T/A Strategen JBS&G	
I hereby certify that I have undertaken the assessment of the above site and determined the Bushfire Attack Level stated above in accordance with the requirements of AS 3959-2018.	

Authorised Practitioner Stamp

Reliance on the assessment and determination of the Bushfire Attack Level contained in this certificate should not extend beyond a period of 12 months from the date of issue of the certificate. If this certificate was issued more than 12 months ago, it is recommended that the validity of the determination be confirmed with the Accredited Practitioner and where required an updated certificate issued.

Bushfire Attack Level (BAL) Certificate

Determined in accordance with AS 3959-2018

This Certificate has been issued by a person accredited by Fire Protection Association Australia under the Bushfire Planning and Design (BPAD) Accreditation Scheme. The certificate details the conclusions of the full Bushfire Attack Level Assessment Report (full report) prepared by the Accredited Practitioner.

Property Details and Description of Works

Address Details	Unit no	Street no	Lot no	Street name / Plan Reference		
			1408	Bundjalung Rise		
	Suburb			State	Postcode	
	Yanchep			WA	6035	
Local government area	City of Wanneroo					
Main BCA class of the building	Class 1a	Use(s) of the building	Residential dwelling			
Description of the building or works	Construction of a single Class 1a building and associated Class 10a building/s					

Determination of Highest Bushfire Attack Level

AS 3959 Assessment Procedure	Vegetation Classification	Effective Slope	Separation Distance	BAL
Method 1	Class D Scrub	Flat/upslope (0°)	56m	BAL - 12.5

BPAD Accredited Practitioner Details

Name Zac Cockerill	<div style="border: 1px solid black; padding: 5px;"> <p>I hereby declare that I am a BPAD accredited bushfire practitioner.</p> <p>Accreditation No. <u>37803</u></p> <p>Signature <u>[Signature]</u></p> <p>Date <u>08/9/21</u></p> </div>
Company Details JBS&G Australia Pty Ltd T/A Strategen JBS&G	
I hereby certify that I have undertaken the assessment of the above site and determined the Bushfire Attack Level stated above in accordance with the requirements of AS 3959-2018.	

Authorized Practitioner Stamp

Reliance on the assessment and determination of the Bushfire Attack Level contained in this certificate should not extend beyond a period of 12 months from the date of issue of the certificate. If this certificate was issued more than 12 months ago, it is recommended that the validity of the determination be confirmed with the Accredited Practitioner and where required an updated certificate issued.

Bushfire Attack Level (BAL) Certificate

Determined in accordance with AS 3959-2018

This Certificate has been issued by a person accredited by Fire Protection Association Australia under the Bushfire Planning and Design (BPAD) Accreditation Scheme. The certificate details the conclusions of the full Bushfire Attack Level Assessment Report (full report) prepared by the Accredited Practitioner.

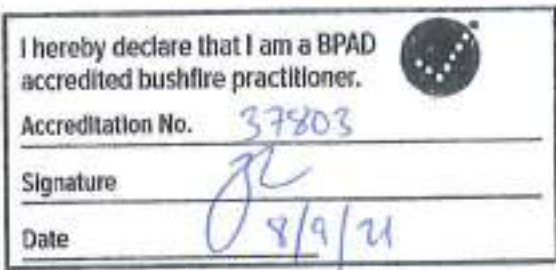
Property Details and Description of Works

Address Details	Unit no	Street no	Lot no	Street name / Plan Reference		
			2172	Bundjalung Rise		
Local government area	Suburb			State	Postcode	
	Yanchep			WA	6035	
Main BCA class of the building	City of Wanneroo					
Description of the building or works	Class 1a	Use(s) of the building	Residential dwelling			
	Construction of a single Class 1a building and associated Class 10a building/s					

Determination of Highest Bushfire Attack Level

AS 3959 Assessment Procedure	Vegetation Classification	Effective Slope	Separation Distance	BAL
Method 1	Class D Scrub	Flat/upslope (0°)	14m (lower BAL achievable with setback)	BAL - 29

BPAD Accredited Practitioner Details

Name Zac Cockerill	<div>  <p>I hereby declare that I am a BPAD accredited bushfire practitioner.</p> <p>Accreditation No. 37803</p> <p>Signature <i>[Signature]</i></p> <p>Date 8/9/21</p> </div>
Company Details JBS&G Australia Pty Ltd T/A Strategen JBS&G	
I hereby certify that I have undertaken the assessment of the above site and determined the Bushfire Attack Level stated above in accordance with the requirements of AS 3959-2018.	

Authorised Practitioner Stamp

Reliance on the assessment and determination of the Bushfire Attack Level contained in this certificate should not extend beyond a period of 12 months from the date of issue of the certificate. If this certificate was issued more than 12 months ago, it is recommended that the validity of the determination be confirmed with the Accredited Practitioner and where required an updated certificate issued.

Bushfire Attack Level (BAL) Certificate

Determined in accordance with AS 3959-2018

This Certificate has been issued by a person accredited by Fire Protection Association Australia under the Bushfire Planning and Design (BPAD) Accreditation Scheme. The certificate details the conclusions of the full Bushfire Attack Level Assessment Report (full report) prepared by the Accredited Practitioner.

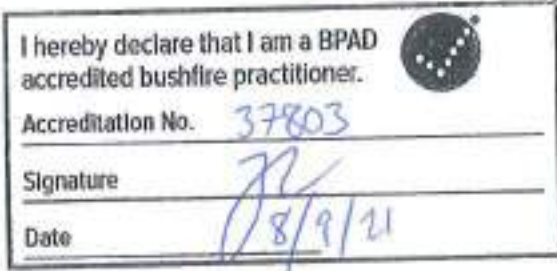
Property Details and Description of Works

Address Details	Unit no	Street no	Lot no	Street name / Plan Reference		
			2196	Bundjalung Rise		
	Suburb			State	Postcode	
	Yanchep			WA	6035	
Local government area	City of Wanneroo					
Main BCA class of the building	Class 1a	Use(s) of the building		Residential dwelling		
Description of the building or works	Construction of a single Class 1a building and associated Class 10a building/s					

Determination of Highest Bushfire Attack Level

AS 3959 Assessment Procedure	Vegetation Classification	Effective Slope	Separation Distance	BAL
Method 1	Class D Scrub	Flat/upslope (0°)	44m	BAL - 12.5

BPAD Accredited Practitioner Details

Name Zac Cockerill	 <p>I hereby declare that I am a BPAD accredited bushfire practitioner.</p> <p>Accreditation No. 37803</p> <p>Signature [Signature]</p> <p>Date 18/9/21</p>
Company Details JBS&G Australia Pty Ltd T/A Strategen JBS&G	
I hereby certify that I have undertaken the assessment of the above site and determined the Bushfire Attack Level stated above in accordance with the requirements of AS 3959-2018.	

Authorized Practitioner Stamp

Reliance on the assessment and determination of the Bushfire Attack Level contained in this certificate should not extend beyond a period of 12 months from the date of issue of the certificate. If this certificate was issued more than 12 months ago, it is recommended that the validity of the determination be confirmed with the Accredited Practitioner and where required an updated certificate issued.

Bushfire Attack Level (BAL) Certificate

Determined in accordance with AS 3959-2018

This Certificate has been issued by a person accredited by Fire Protection Association Australia under the Bushfire Planning and Design (BPAD) Accreditation Scheme. The certificate details the conclusions of the full Bushfire Attack Level Assessment Report (full report) prepared by the Accredited Practitioner.


Property Details and Description of Works

Address Details	Unit no	Street no	Lot no	Street name / Plan Reference	
			2211	Mebbin Grove	
Local government area	Suburb			State	Postcode
	Yanchep			WA	6035
Main BCA class of the building	City of Wanneroo				
Description of the building or works	Class 1a	Use(s) of the building	Residential dwelling		
	Construction of a single Class 1a building and associated Class 10a building/s				

Determination of Highest Bushfire Attack Level

AS 3959 Assessment Procedure	Vegetation Classification	Effective Slope	Separation Distance	BAL
Method 1	Class D Scrub	Flat/upslope (0°)	54m	BAL - 12.5

BPAD Accredited Practitioner Details

Name Zac Cockerill	<div style="border: 1px solid black; padding: 5px;"> <p>I hereby declare that I am a BPAD accredited bushfire practitioner. </p> <p>Accreditation No. <u>37803</u></p> <p>Signature <u>[Signature]</u></p> <p>Date <u>8/9/21</u></p> </div>
Company Details JBS&G Australia Pty Ltd T/A Strategen JBS&G	
I hereby certify that I have undertaken the assessment of the above site and determined the Bushfire Attack Level stated above in accordance with the requirements of AS 3959-2018.	

Authorised Practitioner Stamp

Reliance on the assessment and determination of the Bushfire Attack Level contained in this certificate should not extend beyond a period of 12 months from the date of issue of the certificate. If this certificate was issued more than 12 months ago, it is recommended that the validity of the determination be confirmed with the Accredited Practitioner and where required on updated certificate issued.

Bushfire Attack Level (BAL) Certificate

Determined in accordance with AS 3959-2018

This Certificate has been issued by a person accredited by Fire Protection Association Australia under the Bushfire Planning and Design (BPAD) Accreditation Scheme. The certificate details the conclusions of the full Bushfire Attack Level Assessment Report (full report) prepared by the Accredited Practitioner.

Property Details and Description of Works

Address Details	Unit no	Street no	Lot no	Street name / Plan Reference		
			1378	Cocoparra Parkway		
Local government area	Suburb			State	Postcode	
	Yanchep			WA	6035	
Main BCA class of the building	City of Wanneroo					
Description of the building or works	Class 1a	Use(s) of the building	Residential dwelling			
	Construction of a single Class 1a building and associated Class 10a building/s					

Determination of Highest Bushfire Attack Level

AS 3959 Assessment Procedure	Vegetation Classification	Effective Slope	Separation Distance	BAL
Method 1	Class D Scrub	Flat/upslope (0°)	32m	BAL – 12.5

BPAD Accredited Practitioner Details

Name Zac Cockerill Company Details JBS&G Australia Pty Ltd T/A Strategen JBS&G I hereby certify that I have undertaken the assessment of the above site and determined the Bushfire Attack Level stated above in accordance with the requirements of AS 3959-2018.	 <p>I hereby declare that I am a BPAD accredited bushfire practitioner.</p> <p>Accreditation No. 37803</p> <p>Signature <i>[Signature]</i></p> <p>Date 5/10/21</p>

Authorised Practitioner Stamp

Reliance on the assessment and determination of the Bushfire Attack Level contained in this certificate should not extend beyond a period of 12 months from the date of issue of the certificate. If this certificate was issued more than 12 months ago, it is recommended that the validity of the determination be confirmed with the Accredited Practitioner and where required an updated certificate issued.

Bushfire Attack Level (BAL) Certificate

Determined in accordance with AS 3959-2018

This Certificate has been issued by a person accredited by Fire Protection Association Australia under the Bushfire Planning and Design (BPAD) Accreditation Scheme. The certificate details the conclusions of the full Bushfire Attack Level Assessment Report (full report) prepared by the Accredited Practitioner.

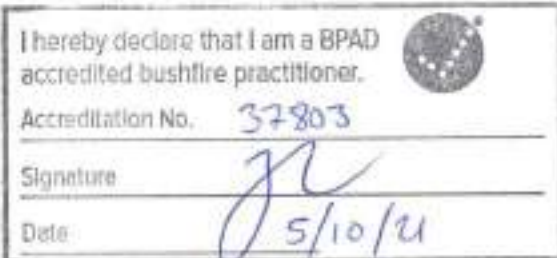
Property Details and Description of Works

Address Details	Unit no	Street no	Lot no	Street name / Plan Reference		
			1379	Cocoparra Parkway		
Local government area	Suburb			State	Postcode	
	Yanchep			WA	6035	
Main BCA class of the building	City of Wanneroo					
Description of the building or works	Class 1a	Use(s) of the building	Residential dwelling			
	Construction of a single Class 1a building and associated Class 10a building/s					

Determination of Highest Bushfire Attack Level

AS 3959 Assessment Procedure	Vegetation Classification	Effective Slope	Separation Distance	BAL
Method 1	Class D Scrub	Flat/upslope (0°)	21m	BAL – 19

BPAD Accredited Practitioner Details

Name Zac Cockerill	 <p>I hereby declare that I am a BPAD accredited bushfire practitioner.</p> <p>Accreditation No. 37803</p> <p>Signature <i>[Signature]</i></p> <p>Date 5/10/21</p>
Company Details JBS&G Australia Pty Ltd T/A Strategen JBS&G	
I hereby certify that I have undertaken the assessment of the above site and determined the Bushfire Attack Level stated above in accordance with the requirements of AS 3959-2018.	

Authorised Practitioner Stamp

Reliance on the assessment and determination of the Bushfire Attack Level contained in this certificate should not extend beyond a period of 12 months from the date of issue of the certificate. If this certificate was issued more than 12 months ago, it is recommended that the validity of the determination be confirmed with the Accredited Practitioner and where required an updated certificate issued.

Bushfire Attack Level (BAL) Certificate

Determined in accordance with AS 3959-2018

This Certificate has been issued by a person accredited by Fire Protection Association Australia under the Bushfire Planning and Design (BPAD) Accreditation Scheme. The certificate details the conclusions of the full Bushfire Attack Level Assessment Report (full report) prepared by the Accredited Practitioner.

Property Details and Description of Works

Address Details	Unit no	Street no	Lot no	Street name / Plan Reference		
			1377	Cocoparra Parkway		
Local government area	Suburb			State	Postcode	
	Yanchep			WA	6035	
Main BCA class of the building	City of Wanneroo					
Description of the building or works	Class 1a	Use(s) of the building	Residential dwelling			
	Construction of a single Class 1a building and associated Class 10a building/s					

Determination of Highest Bushfire Attack Level

AS 3959 Assessment Procedure	Vegetation Classification	Effective Slope	Separation Distance	BAL
Method 1	Class D Scrub	Flat/upslope (0°)	44m	BAL – 12.5

BPAD Accredited Practitioner Details

Name Zac Cockerill Company Details JBS&G Australia Pty Ltd T/A Strategen JBS&G I hereby certify that I have undertaken the assessment of the above site and determined the Bushfire Attack Level stated above in accordance with the requirements of AS 3959-2018.	 <p>I hereby declare that I am a BPAD accredited bushfire practitioner. Accreditation No. 37803 Signature [Signature] Date 5/10/21</p>

Authorised Practitioner Stamp

Reliance on the assessment and determination of the Bushfire Attack Level contained in this certificate should not extend beyond a period of 12 months from the date of issue of the certificate. If this certificate was issued more than 12 months ago, it is recommended that the validity of the determination be confirmed with the Accredited Practitioner and where required an updated certificate issued.

Bushfire Attack Level (BAL) Certificate

Determined in accordance with AS 3959-2018

This Certificate has been issued by a person accredited by Fire Protection Association Australia under the Bushfire Planning and Design (BPAD) Accreditation Scheme. The certificate details the conclusions of the full Bushfire Attack Level Assessment Report (full report) prepared by the Accredited Practitioner.

Property Details and Description of Works

Address Details	Unit no	Street no	Lot no	Street name / Plan Reference		
			1376	Cocoparra Parkway		
Local government area	Suburb			State	Postcode	
	Yanchep			WA	6035	
Main BCA class of the building	City of Wanneroo					
Description of the building or works	Class 1a	Use(s) of the building	Residential dwelling			
	Construction of a single Class 1a building and associated Class 10a building/s					

Determination of Highest Bushfire Attack Level

AS 3959 Assessment Procedure	Vegetation Classification	Effective Slope	Separation Distance	BAL
Method 1	Class D Scrub	Flat/upslope (0°)	67m	BAL – 12.5

BPAD Accredited Practitioner Details

Name Zac Cockerill	 <p>I hereby declare that I am a BPAD accredited bushfire practitioner. Accreditation No. 37803 Signature [Signature] Date 5/10/21</p>
Company Details JBS&G Australia Pty Ltd T/A Strategen JBS&G	
I hereby certify that I have undertaken the assessment of the above site and determined the Bushfire Attack Level stated above in accordance with the requirements of AS 3959-2018.	

Authorised Practitioner Stamp

Reliance on the assessment and determination of the Bushfire Attack Level contained in this certificate should not extend beyond a period of 12 months from the date of issue of the certificate. If this certificate was issued more than 12 months ago, it is recommended that the validity of the determination be confirmed with the Accredited Practitioner and where required an updated certificate issued.

Bushfire Attack Level (BAL) Certificate

Determined in accordance with AS 3959-2018

This Certificate has been issued by a person accredited by Fire Protection Association Australia under the Bushfire Planning and Design (BPAD) Accreditation Scheme. The certificate details the conclusions of the full Bushfire Attack Level Assessment Report (full report) prepared by the Accredited Practitioner.

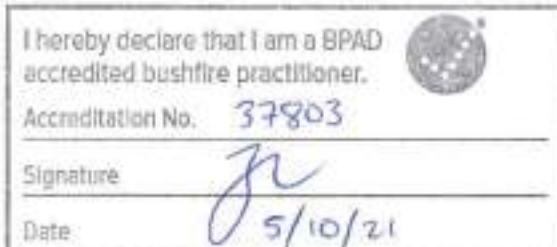
Property Details and Description of Works

Address Details	Unit no	Street no	Lot no	Street name / Plan Reference		
			1375	Cocoparra Parkway		
Local government area	Suburb			State		Postcode
	Yanchep			WA		6035
Main BCA class of the building	City of Wanneroo					
Description of the building or works	Class 1a	Use(s) of the building		Residential dwelling		
	Construction of a single Class 1a building and associated Class 10a building/s					

Determination of Highest Bushfire Attack Level

AS 3959 Assessment Procedure	Vegetation Classification	Effective Slope	Separation Distance	BAL
Method 1	Class D Scrub	Flat/upslope (0°)	77m	BAL - 12.5

BPAD Accredited Practitioner Details

Name Zac Cockerill	<div>  <p>I hereby declare that I am a BPAD accredited bushfire practitioner.</p> <p>Accreditation No. 37803</p> <p>Signature <i>[Signature]</i></p> <p>Date 5/10/21</p> </div>
Company Details JBS&G Australia Pty Ltd T/A Strategen JBS&G	
I hereby certify that I have undertaken the assessment of the above site and determined the Bushfire Attack Level stated above in accordance with the requirements of AS 3959-2018.	

Authorised Practitioner Stamp

Reliance on the assessment and determination of the Bushfire Attack Level contained in this certificate should not extend beyond a period of 12 months from the date of issue of the certificate. If this certificate was issued more than 12 months ago, it is recommended that the validity of the determination be confirmed with the Accredited Practitioner and where required an updated certificate issued.

Bushfire Attack Level (BAL) Certificate

Determined in accordance with AS 3959-2018

This Certificate has been issued by a person accredited by Fire Protection Association Australia under the Bushfire Planning and Design (BPAD) Accreditation Scheme. The certificate details the conclusions of the full Bushfire Attack Level Assessment Report (full report) prepared by the Accredited Practitioner.


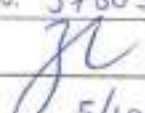
Property Details and Description of Works

Address Details	Unit no	Street no	Lot no	Street name / Plan Reference		
			1373	Cocoparra Parkway		
Local government area	Suburb			State		Postcode
	Yanchep			WA		6035
	City of Wanneroo					
Main BCA class of the building	Class 1a	Use(s) of the building		Residential dwelling		
Description of the building or works	Construction of a single Class 1a building and associated Class 10a building/s					

Determination of Highest Bushfire Attack Level

AS 3959 Assessment Procedure	Vegetation Classification	Effective Slope	Separation Distance	BAL
Method 1	Class D Scrub	Flat/upslope (0°)	56m	BAL - 12.5

BPAD Accredited Practitioner Details

Name Zac Cockerill	<div> I hereby declare that I am a BPAD accredited bushfire practitioner.  </div> <div> Accreditation No. 37803 </div> <div> Signature  </div> <div> Date 5/10/21 </div>
Company Details JBS&G Australia Pty Ltd T/A Strategen JBS&G	
I hereby certify that I have undertaken the assessment of the above site and determined the Bushfire Attack Level stated above in accordance with the requirements of AS 3959-2018.	

Authorised Practitioner Stamp

Reliance on the assessment and determination of the Bushfire Attack Level contained in this certificate should not extend beyond a period of 12 months from the date of issue of the certificate. If this certificate was issued more than 12 months ago, it is recommended that the validity of the determination be confirmed with the Accredited Practitioner and where required an updated certificate issued.

Bushfire Attack Level (BAL) Certificate

Determined in accordance with AS 3959-2018

This Certificate has been issued by a person accredited by Fire Protection Association Australia under the Bushfire Planning and Design (BPAD) Accreditation Scheme. The certificate details the conclusions of the full Bushfire Attack Level Assessment Report (full report) prepared by the Accredited Practitioner.

Property Details and Description of Works

Address Details	Unit no	Street no	Lot no	Street name / Plan Reference		
			1400	Abercombe Avenue		
Local government area	Suburb			State		Postcode
	Yanchep			WA		6035
Main BCA class of the building	City of Wanneroo					
Description of the building or works	Class 1a	Use(s) of the building	Residential dwelling			
	Construction of a single Class 1a building and associated Class 10a building/s					

Determination of Highest Bushfire Attack Level

AS 3959 Assessment Procedure	Vegetation Classification	Effective Slope	Separation Distance	BAL
Method 1	Class D Scrub	Flat/upslope (0°)	19m	BAL – 19

BPAD Accredited Practitioner Details

Name Zac Cockerill	 <p>I hereby declare that I am a BPAD accredited bushfire practitioner.</p> <p>Accreditation No. 37803</p> <p>Signature <i>[Signature]</i></p> <p>Date 5/10/21</p>
Company Details JBS&G Australia Pty Ltd T/A Strategen JBS&G	
I hereby certify that I have undertaken the assessment of the above site and determined the Bushfire Attack Level stated above in accordance with the requirements of AS 3959-2018.	

Authorised Practitioner Stamp

Reliance on the assessment and determination of the Bushfire Attack Level contained in this certificate should not extend beyond a period of 12 months from the date of issue of the certificate. If this certificate was issued more than 12 months ago, it is recommended that the validity of the determination be confirmed with the Accredited Practitioner and where required an updated certificate issued.

Bushfire Attack Level (BAL) Certificate

Determined in accordance with AS 3959-2018

This Certificate has been issued by a person accredited by Fire Protection Association Australia under the Bushfire Planning and Design (BPAD) Accreditation Scheme. The certificate details the conclusions of the full Bushfire Attack Level Assessment Report (full report) prepared by the Accredited Practitioner.

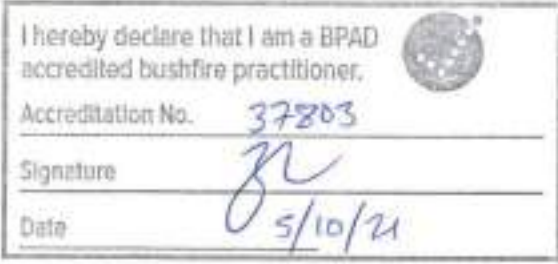
Property Details and Description of Works

Address Details	Unit no	Street no	Lot no	Street name / Plan Reference		
			1399	Abercombie Avenue		
Local government area	Suburb			State	Postcode	
	Yanchep			WA	6035	
Main BCA class of the building	City of Wanneroo					
Description of the building or works	Class 1a	Use(s) of the building	Residential dwelling			
	Construction of a single Class 1a building and associated Class 10a building/s					

Determination of Highest Bushfire Attack Level

AS 3959 Assessment Procedure	Vegetation Classification	Effective Slope	Separation Distance	BAL
Method 1	Class D Scrub	Flat/upslope (0°)	38m	BAL – 12.5

BPAD Accredited Practitioner Details

Name Zac Cockerill	 <p>I hereby declare that I am a BPAD accredited bushfire practitioner.</p> <p>Accreditation No. 37803</p> <p>Signature <i>[Signature]</i></p> <p>Date 5/10/21</p>
Company Details JBS&G Australia Pty Ltd T/A Strategen JBS&G	
I hereby certify that I have undertaken the assessment of the above site and determined the Bushfire Attack Level stated above in accordance with the requirements of AS 3959-2018.	

Authorised Practitioner Stamp

Reliance on the assessment and determination of the Bushfire Attack Level contained in this certificate should not extend beyond a period of 12 months from the date of issue of the certificate. If this certificate was issued more than 12 months ago, it is recommended that the validity of the determination be confirmed with the Accredited Practitioner and where required an updated certificate issued.

Bushfire Attack Level (BAL) Certificate

Determined in accordance with AS 3959-2018

This Certificate has been issued by a person accredited by Fire Protection Association Australia under the Bushfire Planning and Design (BPAD) Accreditation Scheme. The certificate details the conclusions of the full Bushfire Attack Level Assessment Report (full report) prepared by the Accredited Practitioner.

Property Details and Description of Works

Address Details	Unit no	Street no	Lot no	Street name / Plan Reference		
			1398	Abercombie Avenue		
Local government area	Suburb			State	Postcode	
	Yanchep			WA	6035	
Main BCA class of the building	City of Wanneroo					
Description of the building or works	Class 1a	Use(s) of the building	Residential dwelling			
	Construction of a single Class 1a building and associated Class 10a building/s					

Determination of Highest Bushfire Attack Level

AS 3959 Assessment Procedure	Vegetation Classification	Effective Slope	Separation Distance	BAL
Method 1	Class D Scrub	Flat/upslope (0°)	28m	BAL – 12.5

BPAD Accredited Practitioner Details

Name Zac Cockerill Company Details JBS&G Australia Pty Ltd T/A Strategen JBS&G I hereby certify that I have undertaken the assessment of the above site and determined the Bushfire Attack Level stated above in accordance with the requirements of AS 3959-2018.	 <p>I hereby declare that I am a BPAD accredited bushfire practitioner.</p> <p>Accreditation No. 37803</p> <p>Signature <i>[Signature]</i></p> <p>Date 5/10/21</p>

Authorised Practitioner Stamp

Reliance on the assessment and determination of the Bushfire Attack Level contained in this certificate should not extend beyond a period of 12 months from the date of issue of the certificate. If this certificate was issued more than 12 months ago, it is recommended that the validity of the determination be confirmed with the Accredited Practitioner and where required an updated certificate issued.

Bushfire Attack Level (BAL) Certificate

Determined in accordance with AS 3959-2018

This Certificate has been issued by a person accredited by Fire Protection Association Australia under the Bushfire Planning and Design (BPAD) Accreditation Scheme. The certificate details the conclusions of the full Bushfire Attack Level Assessment Report (full report) prepared by the Accredited Practitioner.

Property Details and Description of Works

Address Details	Unit no	Street no	Lot no	Street name / Plan Reference		
			1397	Abercombe Avenue		
Local government area	Suburb			State	Postcode	
	Yanchep			WA	6035	
Main BCA class of the building	City of Wanneroo					
Description of the building or works	Class 1a	Use(s) of the building	Residential dwelling			
	Construction of a single Class 1a building and associated Class 10a building/s					

Determination of Highest Bushfire Attack Level

AS 3959 Assessment Procedure	Vegetation Classification	Effective Slope	Separation Distance	BAL
Method 1	Class D Scrub	Flat/upslope (0°)	16m (lower BAL achievable with setback)	BAL – 29

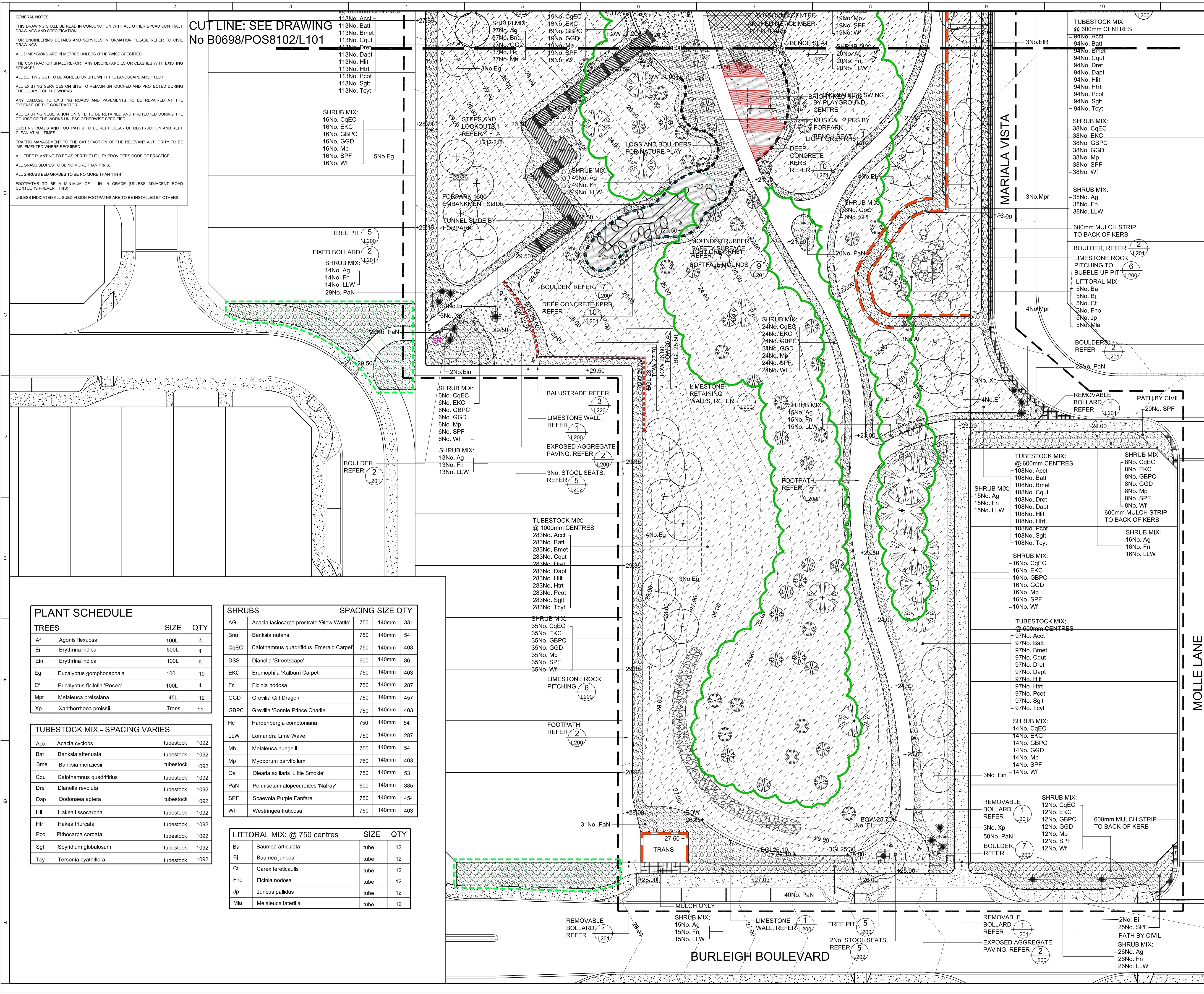
BPAD Accredited Practitioner Details

Name Zac Cockerill	 <p>I hereby declare that I am a BPAD accredited bushfire practitioner.</p> <p>Accreditation No. 33803</p> <p>Signature <i>[Signature]</i></p> <p>Date 5/10/21</p>
Company Details JBS&G Australia Pty Ltd T/A Strategen JBS&G	
I hereby certify that I have undertaken the assessment of the above site and determined the Bushfire Attack Level stated above in accordance with the requirements of AS 3959-2018.	

Authorised Practitioner Stamp

Reliance on the assessment and determination of the Bushfire Attack Level contained in this certificate should not extend beyond a period of 12 months from the date of issue of the certificate. If this certificate was issued more than 12 months ago, it is recommended that the validity of the determination be confirmed with the Accredited Practitioner and where required an updated certificate issued.

Appendix B POS landscape plan



GENERAL NOTES:
THIS DRAWING SHALL BE READ IN CONJUNCTION WITH ALL OTHER EPCAD CONTRACT DRAWINGS AND SPECIFICATION.
FOR ENGINEERING DETAILS AND SERVICES INFORMATION PLEASE REFER TO CIVIL DRAWINGS.
ALL DIMENSIONS ARE IN METRES UNLESS OTHERWISE SPECIFIED.
THE CONTRACTOR SHALL REPORT ANY DISCREPANCIES OR CLASHES WITH EXISTING SERVICES.
ALL SETTING OUT TO BE AGREED ON SITE WITH THE LANDSCAPE ARCHITECT.
ALL EXISTING SERVICES ON SITE TO REMAIN UNTOUCHED AND PROTECTED DURING THE COURSE OF THE WORKS.
ANY DAMAGE TO EXISTING ROADS AND PAVEMENTS TO BE REPAIRED AT THE EXPENSE OF THE CONTRACTOR.
ALL EXISTING VEGETATION ON SITE TO BE RETAINED AND PROTECTED DURING THE COURSE OF THE WORKS UNLESS OTHERWISE SPECIFIED.
EXISTING ROADS AND FOOTPATHS TO BE KEPT CLEAR OF OBSTRUCTION AND KEPT CLEAN AT ALL TIMES.
TRAFFIC MANAGEMENT TO THE SATISFACTION OF THE RELEVANT AUTHORITY TO BE IMPLEMENTED WHERE REQUIRED.
ALL TREE PLANTING TO BE AS PER THE UTILITY PROVIDERS CODE OF PRACTICE.
ALL GRASS SLOPES TO BE NO MORE THAN 1 IN 6.
ALL SHRUBS BED GRADES TO BE NO MORE THAN 1 IN 4.
FOOTPATHS TO BE A MINIMUM OF 1 IN 14 GRADE (UNLESS ADJACENT ROAD CONTOURS PREVENT THIS)
UNLESS INDICATED ALL SUBDIVISION FOOTPATHS ARE TO BE INSTALLED BY OTHERS.

CUT LINE: SEE DRAWING No B0698/POS8102/L101

PLANT SCHEDULE			
TREES	SIZE	QTY	
Af Agonis flexuosa	100L	3	
Ei Erythrina indica	500L	4	
Ein Erythrina indica	100L	5	
Eg Eucalyptus gomphocephala	100L	19	
Et Eucalyptus ficifolia 'Rosea'	100L	4	
Mpr Metaleuca preissiana	45L	12	
Xp Xanthorrhoea preissii	Trans	11	

TUBESTOCK MIX - SPACING VARIES			
Acc Acacia cyclops	tubestock	1092	
Bat Banksia attenuata	tubestock	1092	
Bme Banksia menziesii	tubestock	1092	
Cqu Calothamnus quadrifidus	tubestock	1092	
Dre Dianella revoluta	tubestock	1092	
Dap Dodonaea aptera	tubestock	1092	
Hil Hakea illicocarpha	tubestock	1092	
Htr Hakea trurcata	tubestock	1092	
Pco Pithocarpa cordata	tubestock	1092	
Sgl Spyridium globulosum	tubestock	1092	
Tcy Tersonia cyathiflora	tubestock	1092	

SHRUBS				SPACING SIZE QTY		
AG	Acacia lasiocarpa prostrate 'Glow Wattle'	750	140mm	331		
Bnu	Banksia nutans	750	140mm	54		
CqEC	Calothamnus quadrifidus 'Emerald Carpet'	750	140mm	403		
DSS	Dianella 'Streetscape'	600	140mm	86		
EKC	Eremophila 'Kalbarri Carpet'	750	140mm	403		
Fn	Ficinia nodosa	750	140mm	287		
GGD	Grevilla Gilt Dragon	750	140mm	457		
GBPC	Grevilla 'Bonnie Prince Charlie'	750	140mm	403		
Hc	Hardenbergia comptoniana	750	140mm	54		
LLW	Lomandra Lime Wave	750	140mm	287		
Mh	Metaleuca huegelii	750	140mm	54		
Mp	Myoporum parvifolium	750	140mm	403		
Oa	Olearia axillaris 'Little Smokie'	750	140mm	53		
PaN	Pennisetum alopecuroides 'Nafay'	600	140mm	385		
SPF	Scaevola Purple Fanfare	750	140mm	454		
WF	Westringia fruticosa	750	140mm	403		

LITTORAL MIX: @ 750 centres				SIZE	QTY
Ba	Baumea articulata	tube	12		
Bj	Baumea juncea	tube	12		
Ct	Carex tereticaulis	tube	12		
Fno	Ficinia nodosa	tube	12		
Ip	Juncus pallidus	tube	12		
Mla	Metaleuca laterifolia	tube	12		

1:250

0 2.5m 5 7.5 10 12.5 15

LEGEND

- EXTENT OF WORKS
- FUTURE WORKS EXCLUDED FROM THIS CONTRACT
- EXISTING / COMPLETED WORKS
- TREES TO BE RETAINED AND PROTECTED
- EXTENT OF EXISTING TREE CANOPY
- 500 LITRE TREES
- 100 LITRE TREES
- 45 LITRE TREES
- GRASS TREES
- SHRUB PLANTING
- TUBESTOCK
- LITTORAL PLANTING
- MAINTENANCE ACCESS
- EXPOSED AGGREGATE
- PATHS BY CIVIL
- GREY CONCRETE FOOTPATH
- CLAY BMX TRACK
- LIMESTONE ROCK PITCHING
- 100mm DEPTH MULCH ONLY
- RUBBER SOFTFALL
- PLAY MULCH SOFTFALL
- SAND SOFTFALL
- ROLL-ON TURF
- EXISTING LEVELS
- PROPOSED LEVELS
- LIMESTONE WALL AND LEVEL
- WALLS BY CIVIL
- BQ ELECTRICAL CONNECTION LINE
- BALUSTRADE
- EXTRUDED CONCRETE EDGE
- DEEP CONCRETE KERB
- PROPOSED CONTOURS
- BOULDERS
- REMOVABLE BOLLARD
- FIXED TIMBER BOLLARD
- DRINKING FOUNTAIN: URBAN FF A280 WITH BOTTLE FILLING STATION AND DOG BOWL. FINISH: PRIMED AND 2 PAK EPOXY WET SPRAY.
- RUBBISH BIN TO COW SPEC
- DIRECTIONAL SIGNAGE TO WHEELCHAIR ACCESS RAMP: LEFT, RIGHT AND BOTH LEFT AND RIGHT ORIENTATIONS

F	AS CONSTRUCTED	BW	240516
E	ISSUE FOR CONSTRUCTION	WG	301115
D	REVISED ISSUE FOR TENDER	WG	150915
C	ISSUE FOR TENDER	WG	100915
B	REVISED AS PER COUNCIL COMMENTS	WG	200815
A	ISSUE FOR APPROVAL	WG	300815
No.	REVISION	BY	DATE

Title

LEVELS, KEY AND PLANTING PLAN 2 of 2

Project

JINDOWIE POS 8102

Client

DEPARTMENT OF HOUSING

EPCAD Pty Ltd
28-30 Mayfair Street, West Perth, Western Australia 6005
PO Box 1233, West Perth, Western Australia 6012 • Tel 08 9481 4410 • Fax 08 9481 6903
email@epcad.com.au

The information contained in this document is the copyright of EPCAD Pty Ltd. Use or copying of the document in whole or part without the written permission of EPCAD Pty Ltd constitute an infringement of copyright.

Project No. Category Drawing No.

B0698/POS8102/L102

Date: JUNE 2015 Revision

Scale: 1:250 @ A1

Issue: AS CONSTRUCTED

Drawn: WG

Checked: **F**

Appendix C Vegetation plot photos and description



Photo ID: 1a



Photo ID: 1b

Plot number	Plot 1
Vegetation classification	Class B Woodland
Description / justification	Woodland vegetation dominated by eucalypts with a grassy understorey and lack of shrubby middle layer.



Photo ID: 2a



Photo ID: 2b



Photo ID: 2c



Photo ID: 2d



Photo ID: 2e



Photo ID: 2f

Plot number	Plot 2
Vegetation classification	Class D Scrub
Description / justification	Scrub vegetation dominated by melaleuca with acacia and sparse sheoak. The majority of this plot is scrub regrowth which, at maturity, will have a continuous horizontal fuel profile of between 2–6 m in height.



Photo ID: 3a

Plot number	Plot 3
Vegetation classification	Class C Shrubland
Description / justification	Shrubs <2 m high; greater than 30% foliage cover. Understory may contain grasses.



Photo ID: 4

Plot number	Plot 4
Vegetation classification	Excluded – Clause 2.2.3.2 [b]
Description / justification	Single areas of vegetation less than 1 ha in area and not within 100 m of other areas of vegetation being classified vegetation.



Photo ID: 5a



Photo ID: 5b



Photo ID: 5c



Photo ID: 5d



Photo ID: 5e



Photo ID: 5f



Photo ID: 5g



Photo ID: 5h

Plot number	Plot 5
Vegetation classification	Excluded – Non-vegetated and Low threat (Clause 2.2.3.2 [e] and [f])
Description / justification	Existing non-vegetated areas (i.e. footpaths, buildings, roads, water bodies, playgrounds and driveways) and low threat managed vegetation (i.e. manicured lawns, street trees, mulched verges, cleared vacant lots, managed gardens and ground cover verge planting).

© JBS&G Australia Pty Ltd T/A Strategen-JBS&G

This document is and shall remain the property of Strategen-JBS&G. The document may only be used for the purposes for which it was commissioned and in accordance with the Terms of Engagement for the commission. Unauthorised use of this document in any form whatsoever is prohibited.

Document Status

Report version	Rev No.	Purpose	Author	Reviewed and Approved for Issue	
				Name	Date
Final Report	Rev 0	Issued for use: to facilitate lot sale and accompany building permit applications	Ben Musitano	Zac Cockerill (BPAD 37803, Level 2)	8 September 2021

