

JINDOWIE
STAGE 22A

NORTH

SCALE 1:250

MNG. Ref: 94611lip-341c Date: 13/10/2021

Depicted information subject to approvals and survey.

All dimensions and areas are subject to survey. The particulars on this brochure are supplied for Information only and shall not be taken as a representation in any respect on the part of the Vendor or its agent. Authorities should be consulted when services are contained within lot boundaries as building restrictions may apply. All retaining walls and associated easements are shown exaggerated for clarity.

LEGEND

WATER

WATER METER/
VALVE / HYDRANT

DEFERRED WATER

NBN CONNECTION

FIBRE DISTRIBUTION HUB (FDH)

SEWER / MANHOLE

DRAINAGE

DRAINAGE VERGE
SWALE

RETAINING WALL
& HEIGHT

RETAINING WALL
& HEIGHT

POWER DOME
MINI PILLAR

POWER DOME
UNIVERSAL PILLAR

STREETLIGHTS

PADMOUNT SITE &
RESTRICTIVE COVENANT

TOP OF
KERB HEIGHT

SPOT LEVEL

PAD LEVEL

ROAD LEVEL

NOISE PACKAGE A

NOISE PACKAGE B

BATTER LINE
VEHICLE ACCESS
RESTRICTION

3m WIDE SEWER
EASEMENT

BUSHFIRE ATTACK LEVEL

BAL 12.5

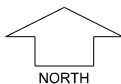
BAL 19


BAL 29

BAL 40

19.60








SCALE 1:250

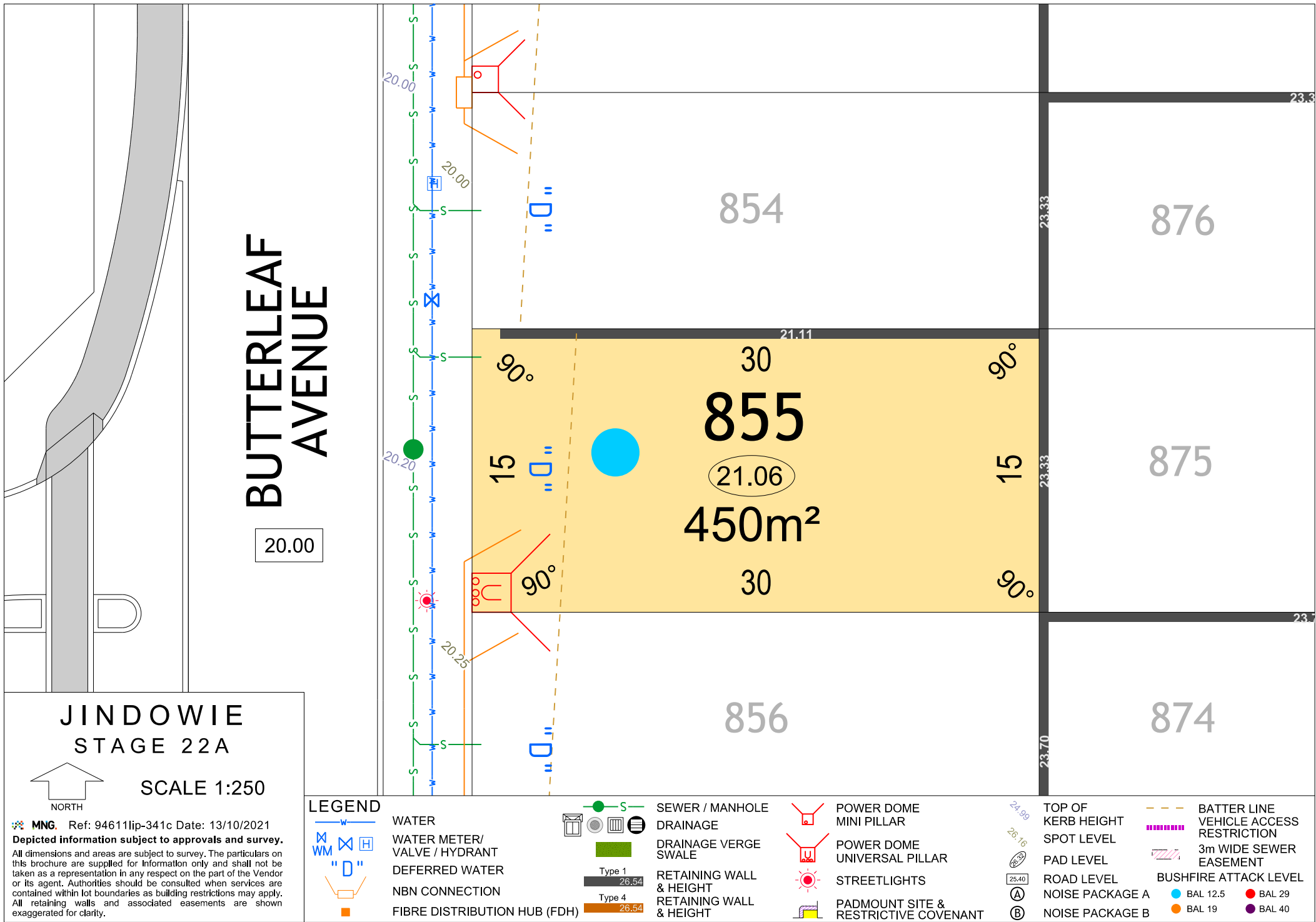


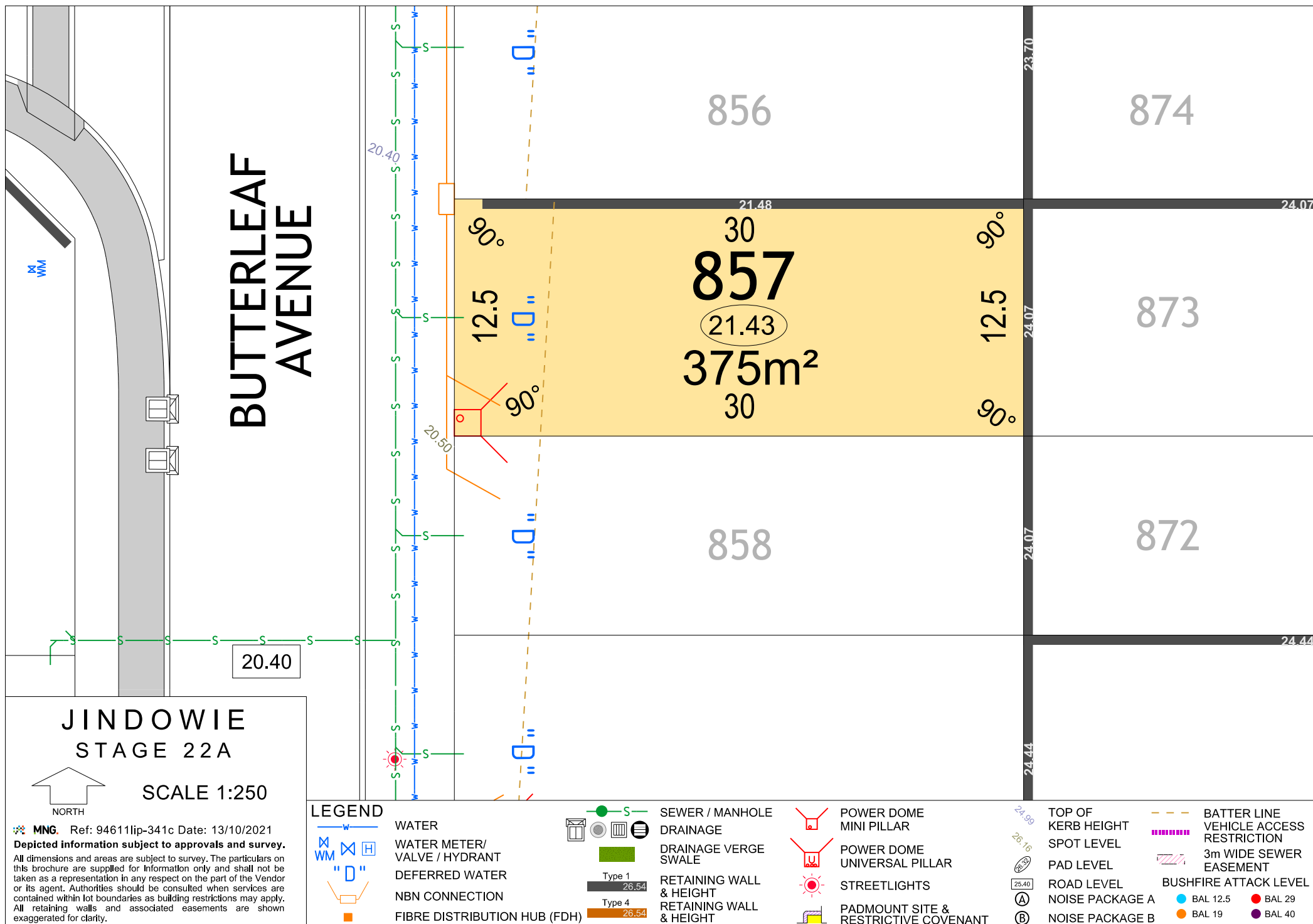
 **MNG.** Ref: 94611lip-341c Date: 13/10/2021

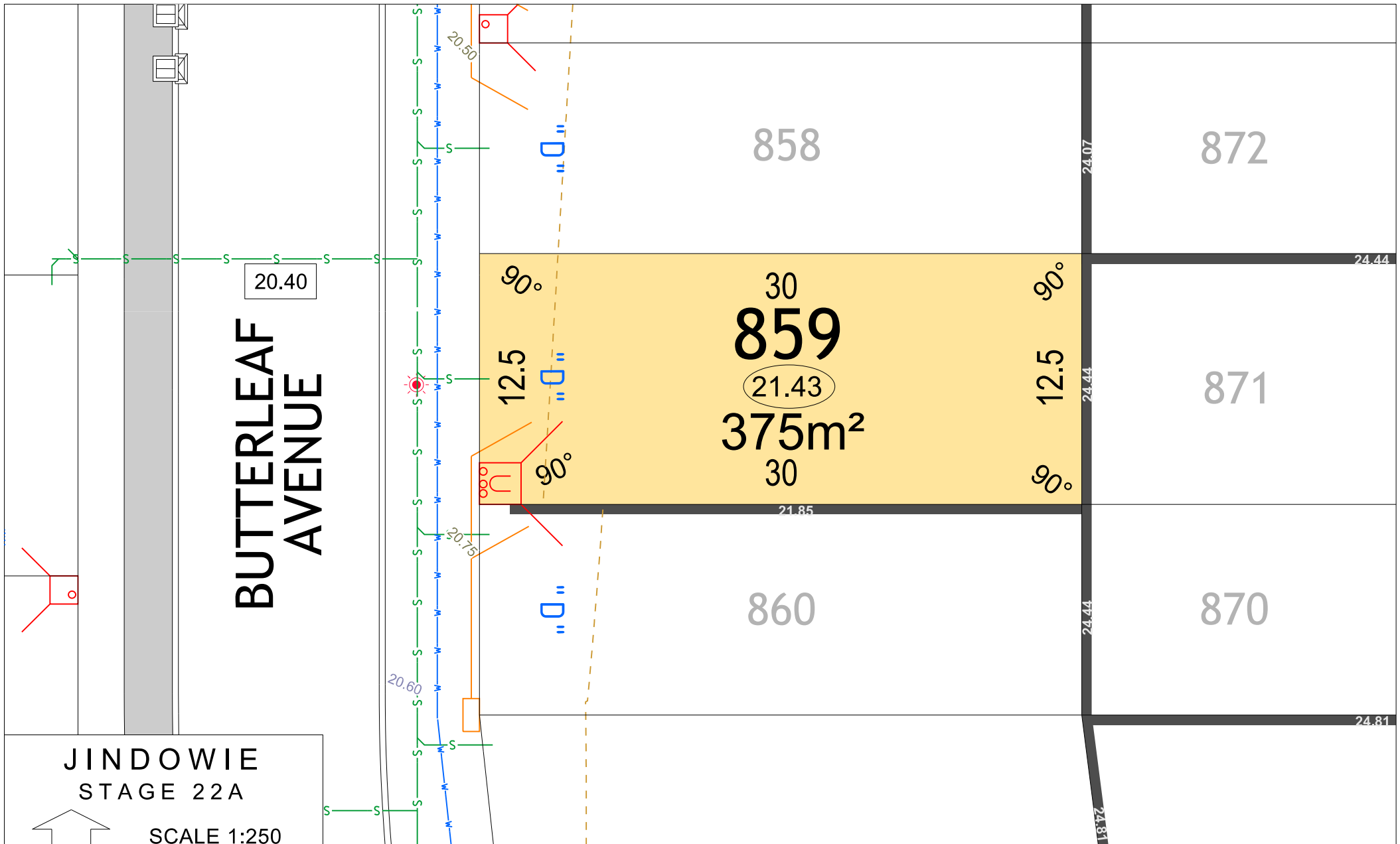
Depicted information subject to approvals and survey.

All dimensions and areas are subject to survey. The particulars on this brochure are supplied for Information only and shall not be taken as a representation in any respect on the part of the Vendor or its agent. Authorities should be consulted when services are contained within lot boundaries as building restrictions may apply. All retaining walls and associated easements are shown exaggerated for clarity.

 BATTER LINE
 VEHICLE ACCESS RESTRICTION
 3m WIDE SEWER EASEMENT
BUSHFIRE ATTACK LEVEL
 E A  BAL 12.5  BAL 29
 E B  BAL 19  BAL 40







JINDOWIE
STAGE 22A

NORTH

SCALE 1:250

MNG.

Ref: 94611lip-341c

Date: 13/10/2021

Depicted information subject to approvals and survey.

All dimensions and areas are subject to survey. The particulars on this brochure are supplied for Information only and shall not be taken as a representation in any respect on the part of the Vendor or its agent. Authorities should be consulted when services are contained within lot boundaries as building restrictions may apply. All retaining walls and associated easements are shown exaggerated for clarity.

LEGEND

S

SEWER / MANHOLE

WM

WATER

"D"

DEFERRED WATER

NBN CONNECTION

FIBRE DISTRIBUTION HUB (FDH)

Type 1

26.54

Type 4

26.54

SEWER / MANHOLE VALVE / HYDRANT

DRAINAGE VERGE SWALE

RETAINING WALL & HEIGHT

RETAINING WALL & HEIGHT

POWER DOME MINI PILLAR

POWER DOME UNIVERSAL PILLAR

STREETLIGHTS

PADMOUNT SITE & RESTRICTIVE COVENANT

TOP OF KERB HEIGHT

SPOT LEVEL

PAD LEVEL

ROAD LEVEL

NOISE PACKAGE A

NOISE PACKAGE B

BATTER LINE

VEHICLE ACCESS RESTRICTION

3m WIDE SEWER EASEMENT

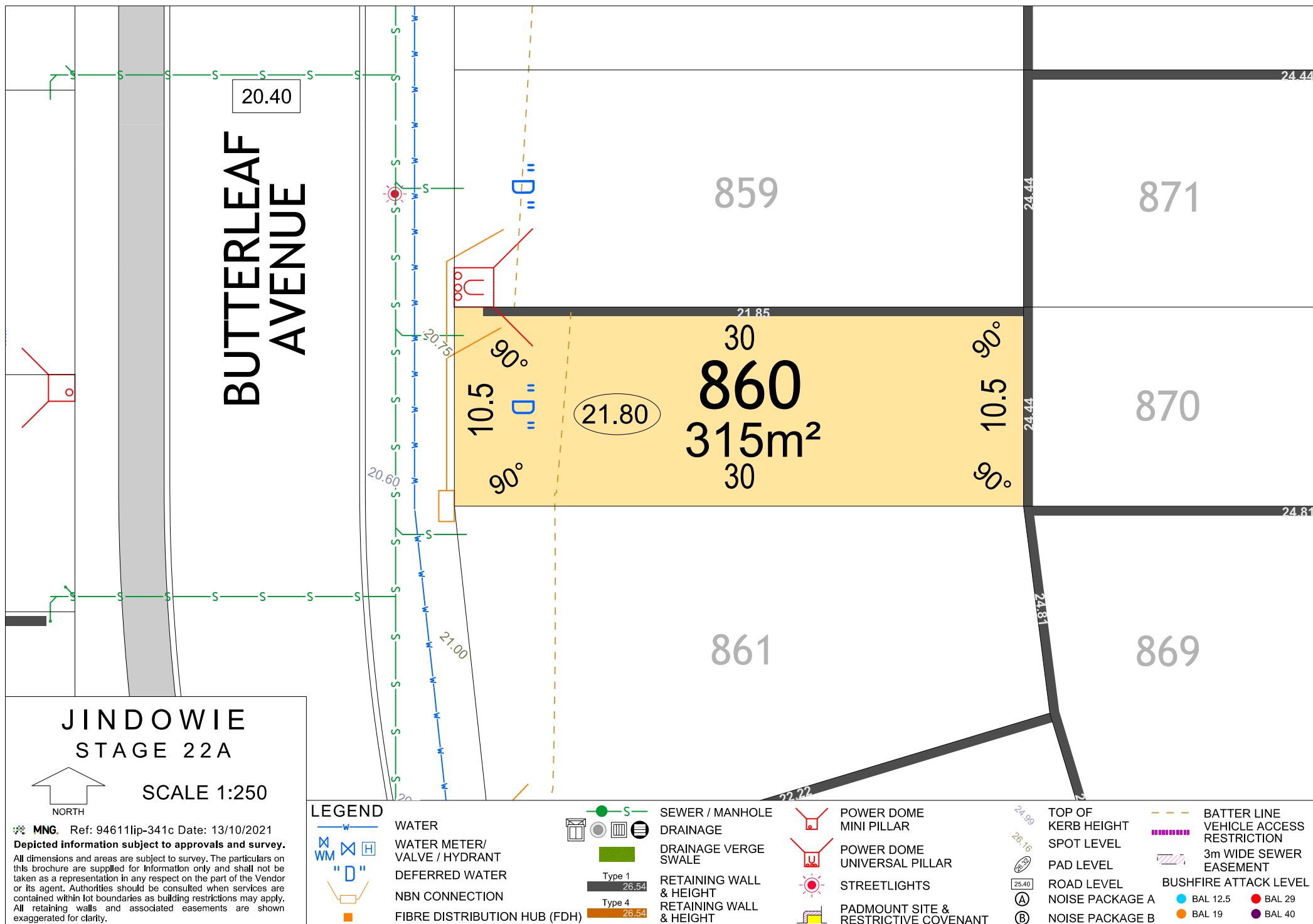
BUSHFIRE ATTACK LEVEL

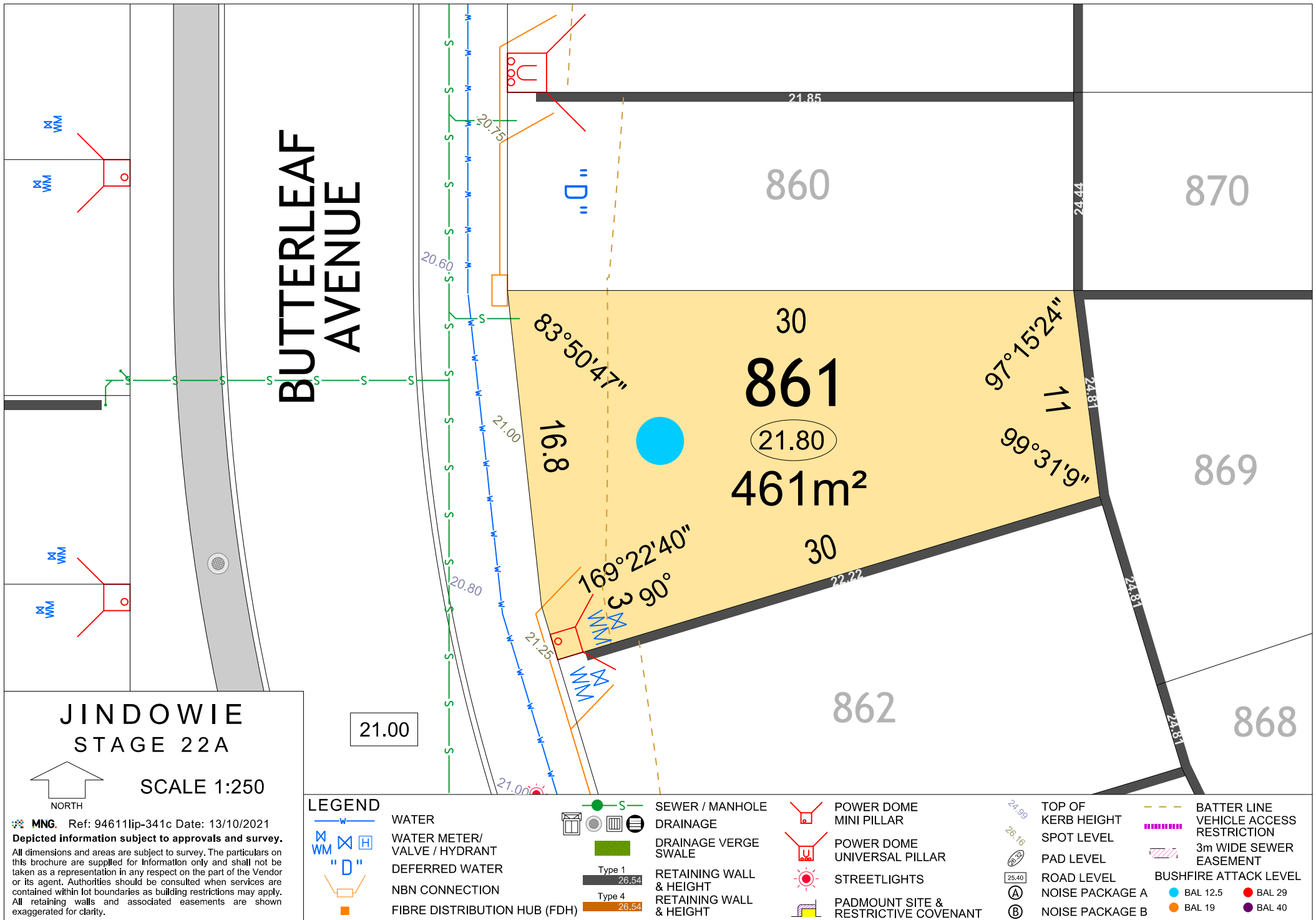
BAL 12.5

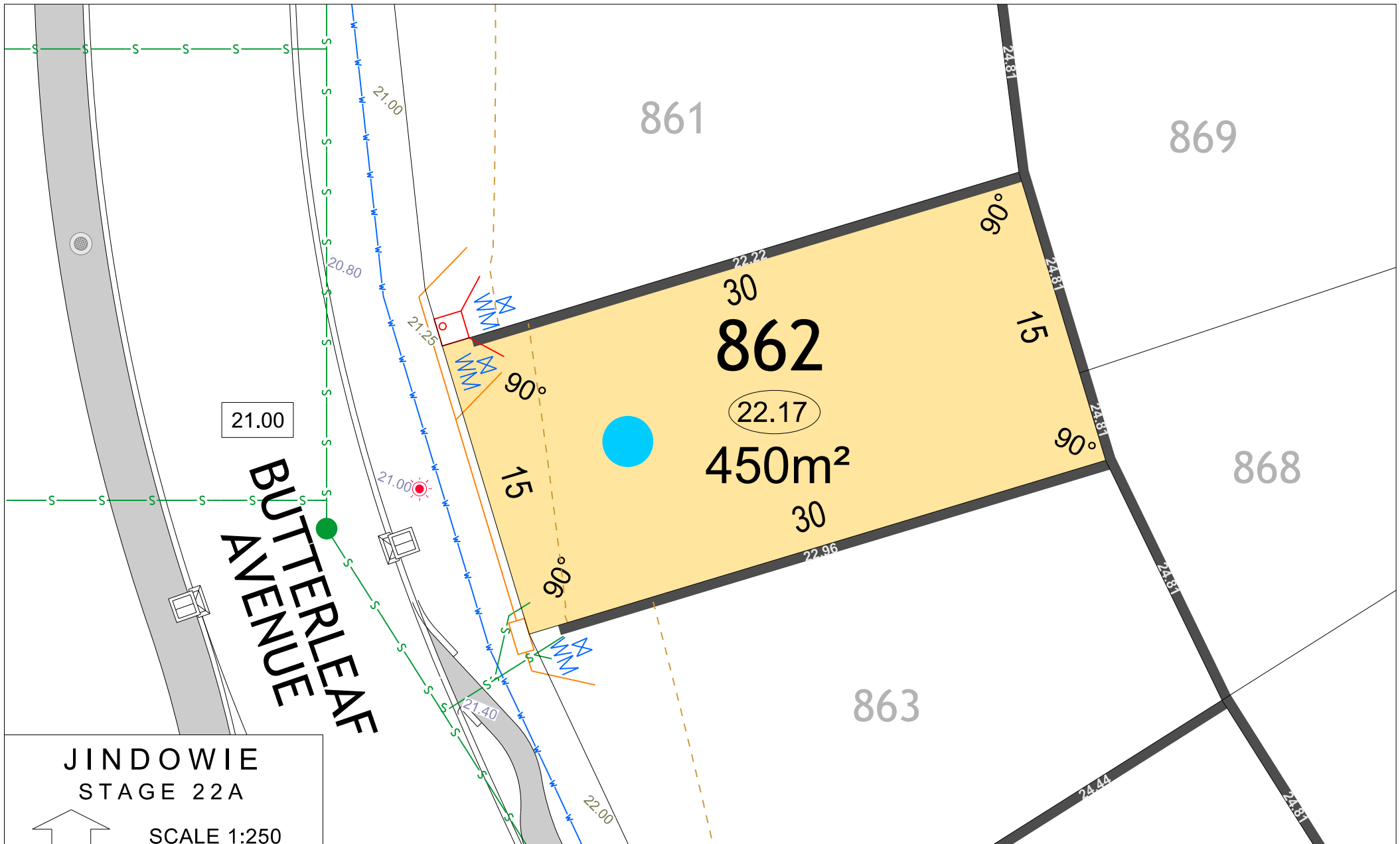
BAL 19

BAL 29

BAL 40







JINDOWIE
STAGE 22A

NORTH

SCALE 1:250

MNG.

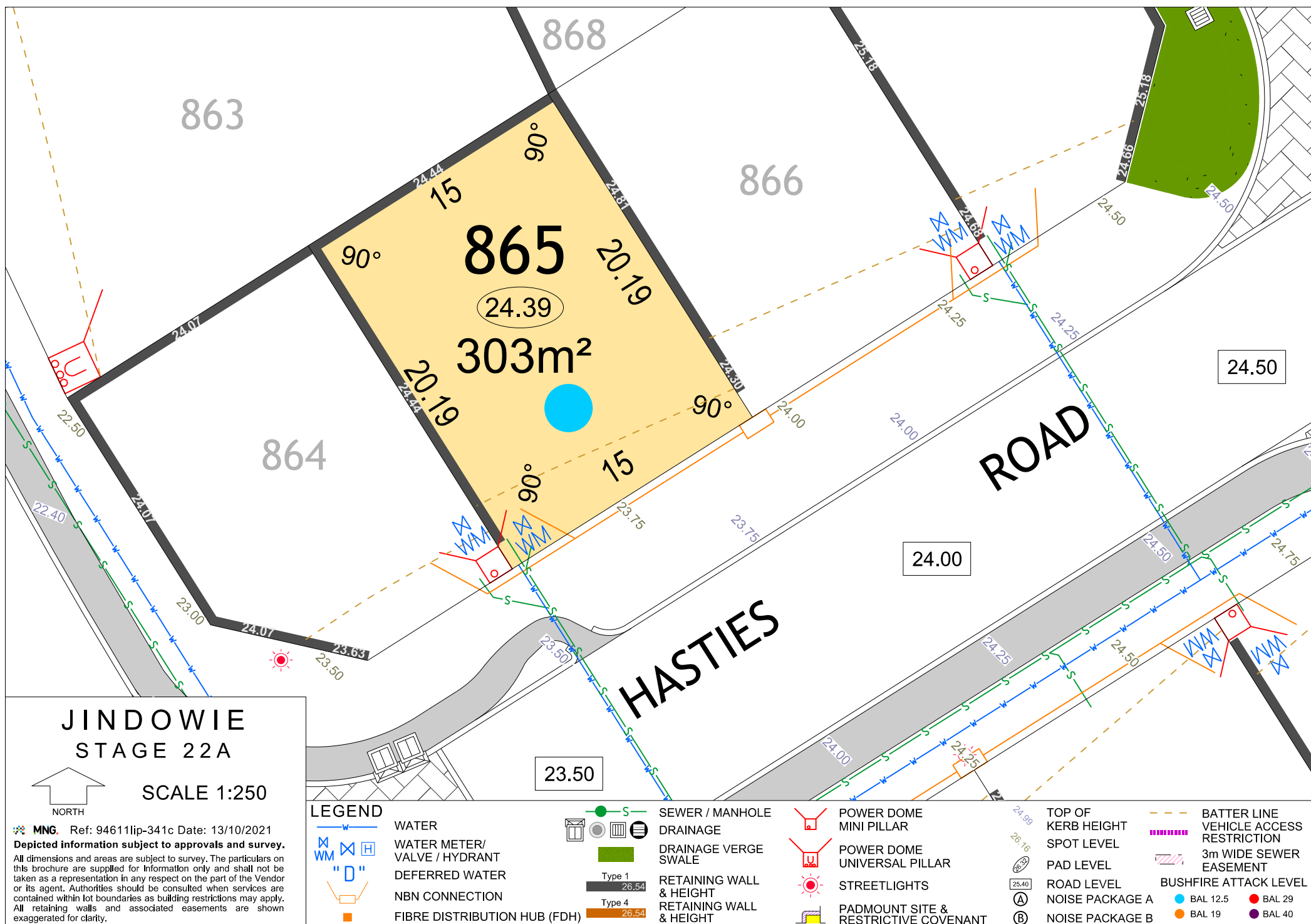
Ref: 94611ip-341c

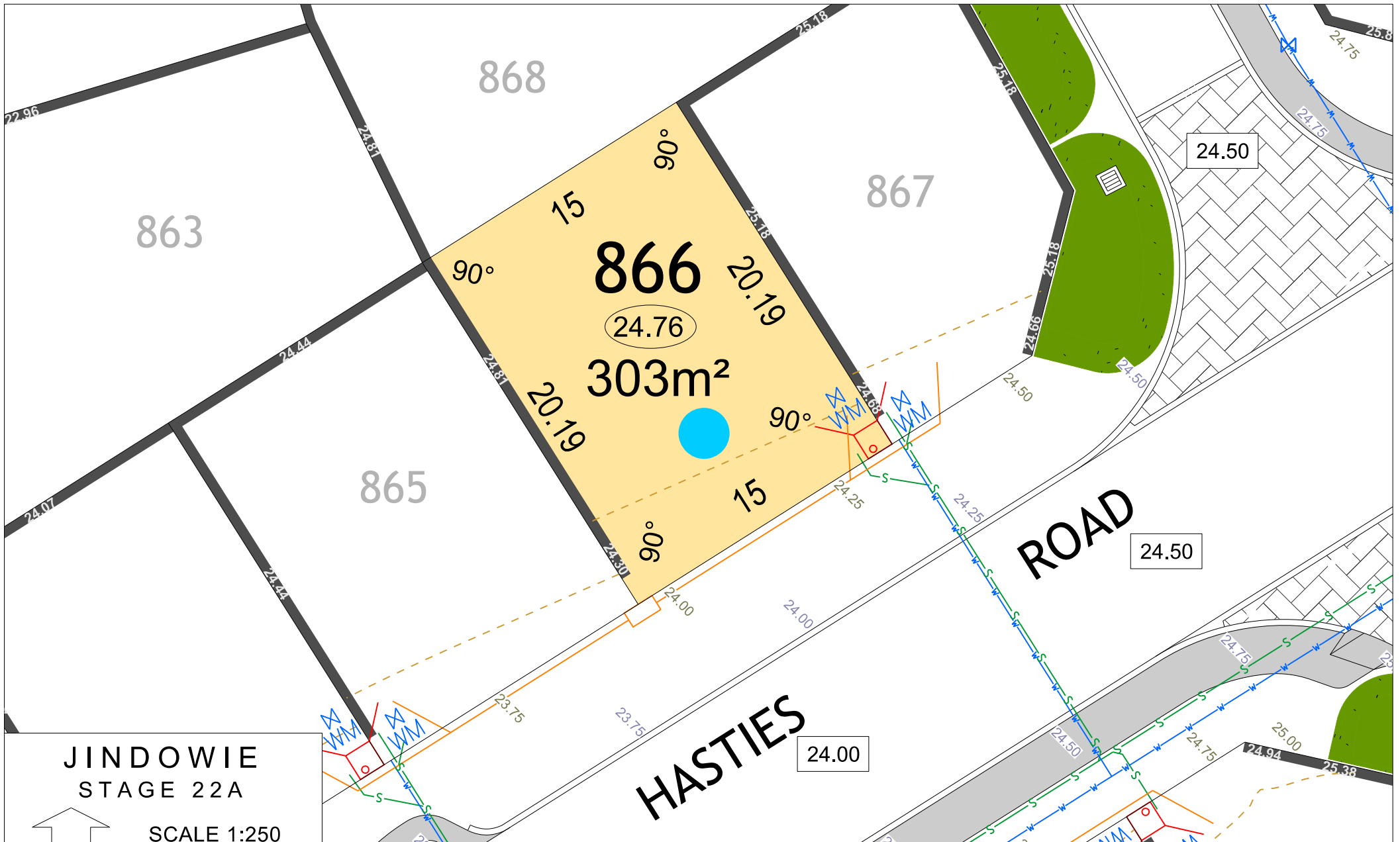
Date: 13/10/2021

Depicted information subject to approvals and survey.

All dimensions and areas are subject to survey. The particulars on this brochure are supplied for Information only and shall not be taken as a representation in any respect on the part of the Vendor or its agent. Authorities should be consulted when services are contained within lot boundaries as building restrictions may apply. All retaining walls and associated easements are shown exaggerated for clarity.

LEGEND			
	WATER		SEWER / MANHOLE
	WATER METER/ VALVE / HYDRANT		DRAINAGE
	DEFERRED WATER		DRAINAGE VERGE SWALE
	NBN CONNECTION		RETAINING WALL & HEIGHT
	FIBRE DISTRIBUTION HUB (FDH)		RETAINING WALL & HEIGHT
			POWER DOME MINI PILLAR
			POWER DOME UNIVERSAL PILLAR
			STREETLIGHTS
			PADMOUNT SITE & RESTRICTIVE COVENANT
			TOP OF KERB HEIGHT
			SPOT LEVEL
			PAD LEVEL
			ROAD LEVEL
			NOISE PACKAGE A
			NOISE PACKAGE B
			BATTER LINE VEHICLE ACCESS RESTRICTION
			3m WIDE SEWER EASEMENT
			BUSHFIRE ATTACK LEVEL
			BAL 12.5
			BAL 19
			BAL 29
			BAL 40





JINDOWIE

STAGE 22A

NORTH

SCALE 1:250

MNG. Ref: 94611ip-341c Date: 13/10/2021

Depicted information subject to approvals and survey.

All dimensions and areas are subject to survey. The particulars on this brochure are supplied for Information only and shall not be taken as a representation in any respect on the part of the Vendor or its agent. Authorities should be consulted when services are contained within lot boundaries as building restrictions may apply. All retaining walls and associated easements are shown exaggerated for clarity.

LEGEND

WATER

WATER METER/
VALVE / HYDRANT

DEFERRED WATER

NBN CONNECTION

FIBRE DISTRIBUTION HUB (FDH)

SEWER / MANHOLE

DRAINAGE

DRAINAGE VERGE
SWALE

RETAINING WALL
& HEIGHT

RETAINING WALL
& HEIGHT

POWER DOME
MINI PILLAR

POWER DOME
UNIVERSAL PILLAR

STREETLIGHTS

PADMOUNT SITE &
RESTRICTIVE COVENANT

TOP OF
KERB HEIGHT
SPOT LEVEL

PAD LEVEL

ROAD LEVEL

NOISE PACKAGE A

NOISE PACKAGE B

BATTER LINE
VEHICLE ACCESS
RESTRICTION

3m WIDE SEWER
EASEMENT

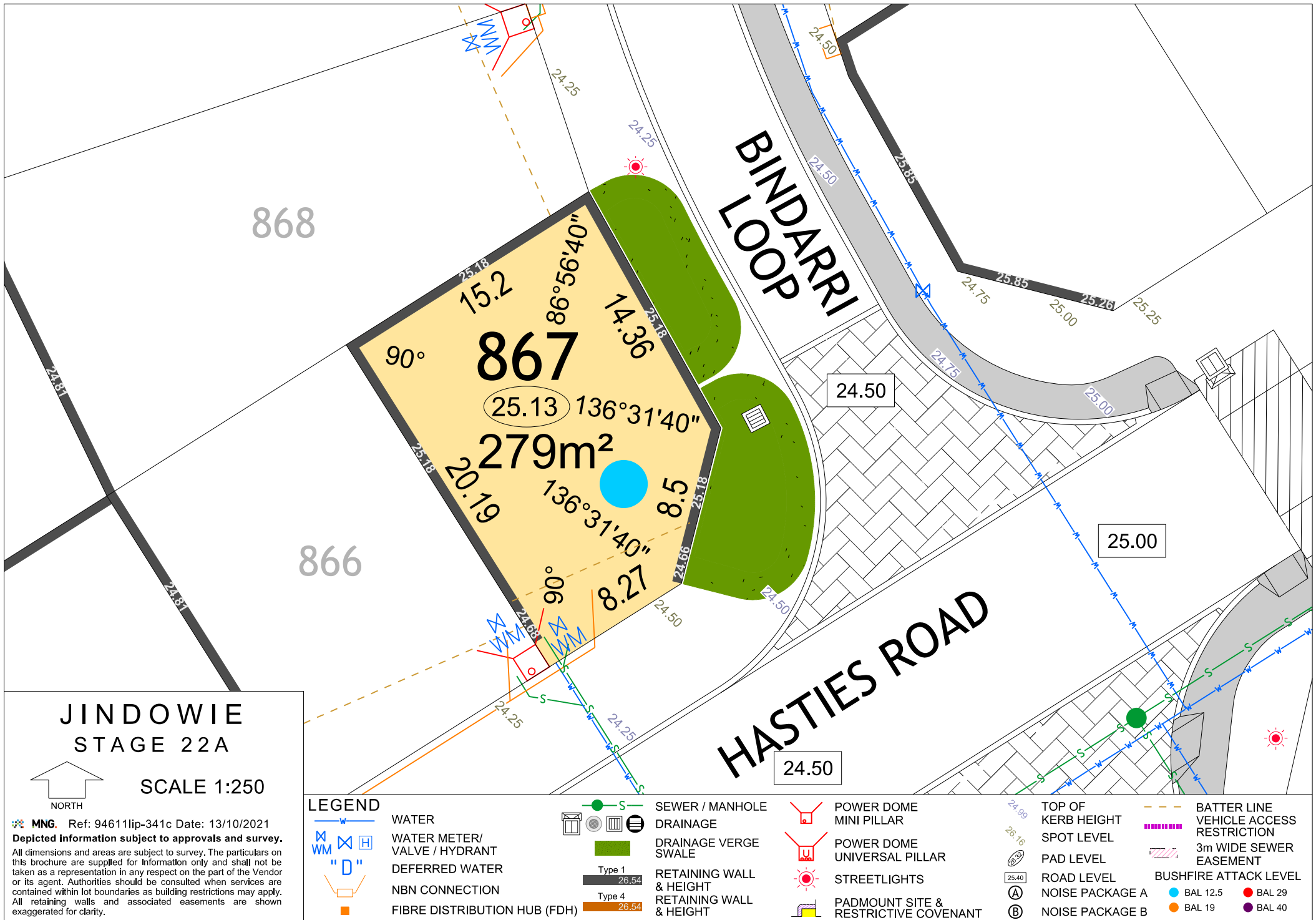
BUSHFIRE ATTACK LEVEL

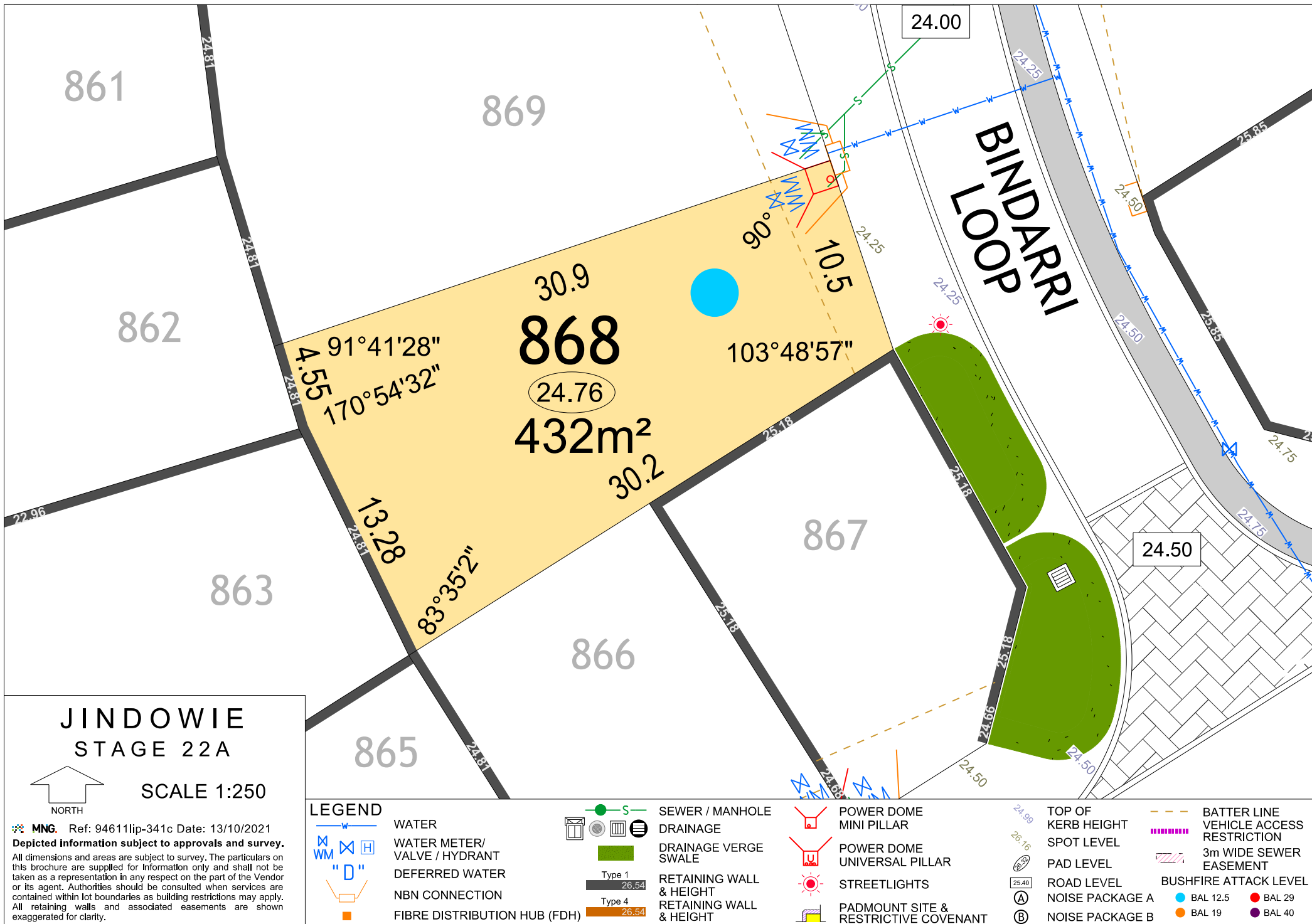
BAL 12.5

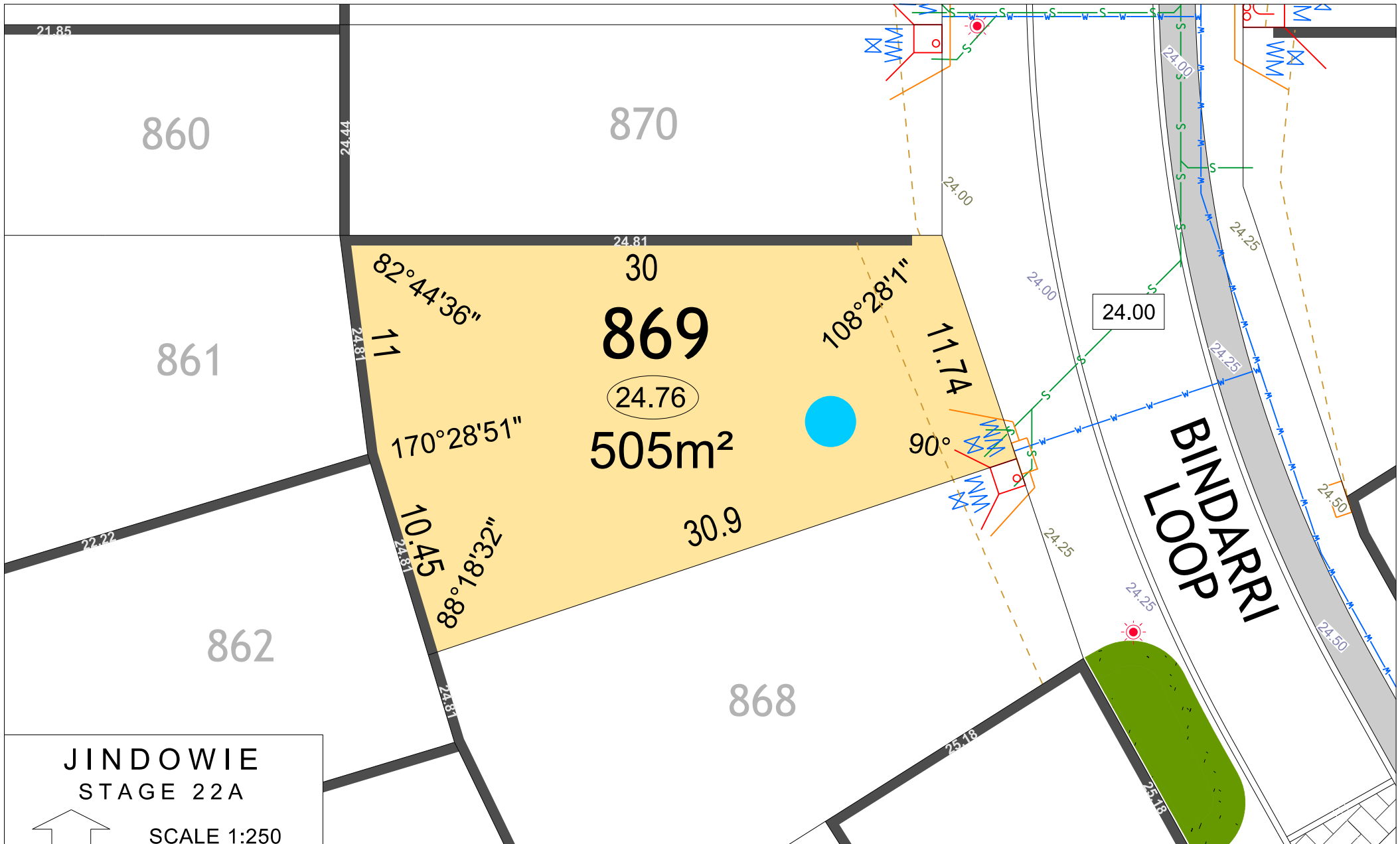
BAL 19

BAL 29

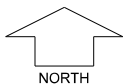
BAL 40







JINDOWIE STAGE 22A

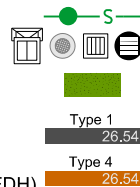


SCALE 1:250

MNG. Ref: 94611ip-341c Date: 13/10/2021
Depicted information subject to approvals and survey.
All dimensions and areas are subject to survey. The particulars on this brochure are supplied for Information only and shall not be taken as a representation in any respect on the part of the Vendor or its agent. Authorities should be consulted when services are contained within lot boundaries as building restrictions may apply. All retaining walls and associated easements are shown exaggerated for clarity.

LEGEND

- WATER
- WATER METER/ VALVE / HYDRANT
- DEFERRED WATER
- NBN CONNECTION
- FIBRE DISTRIBUTION HUB (FDH)

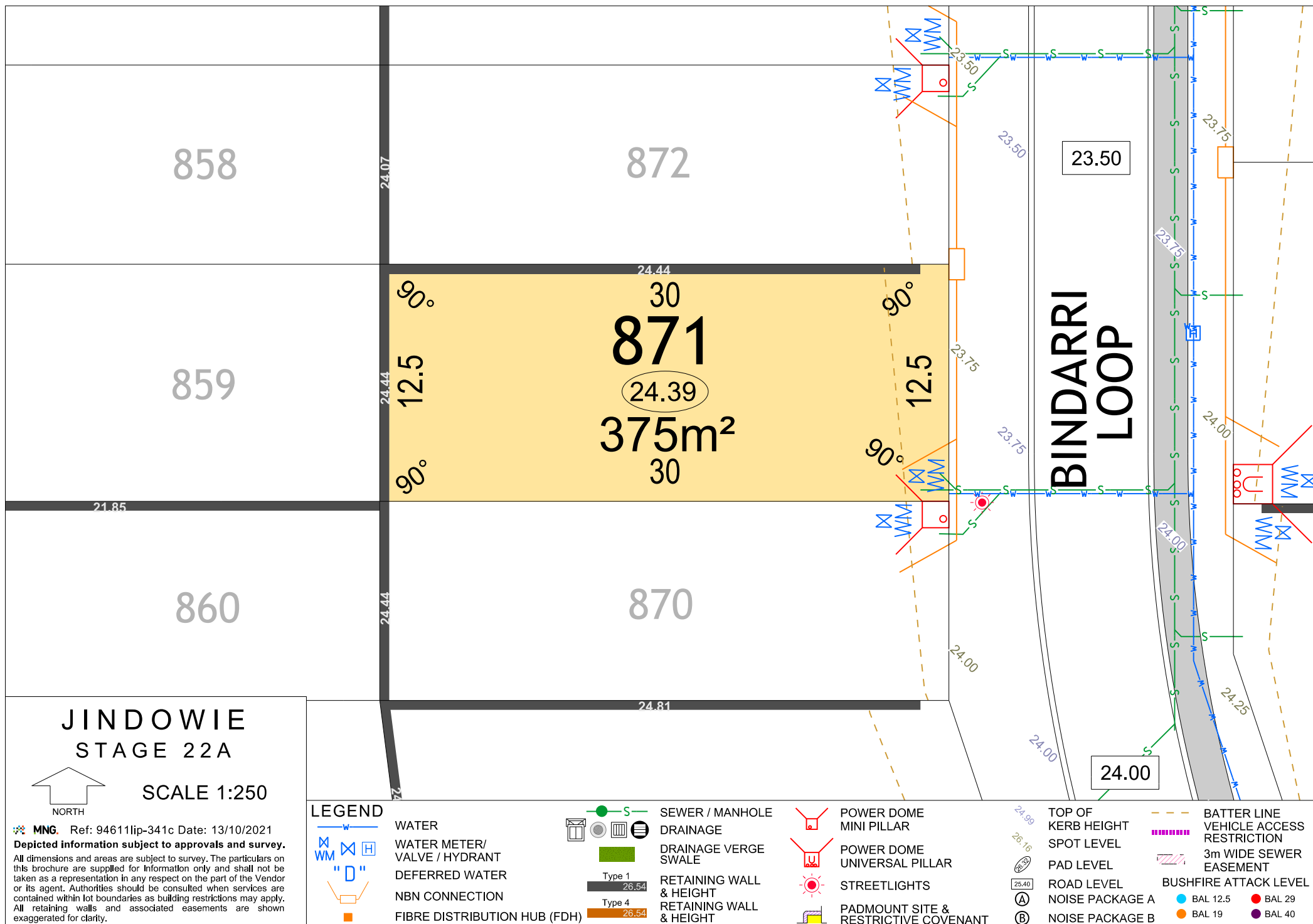


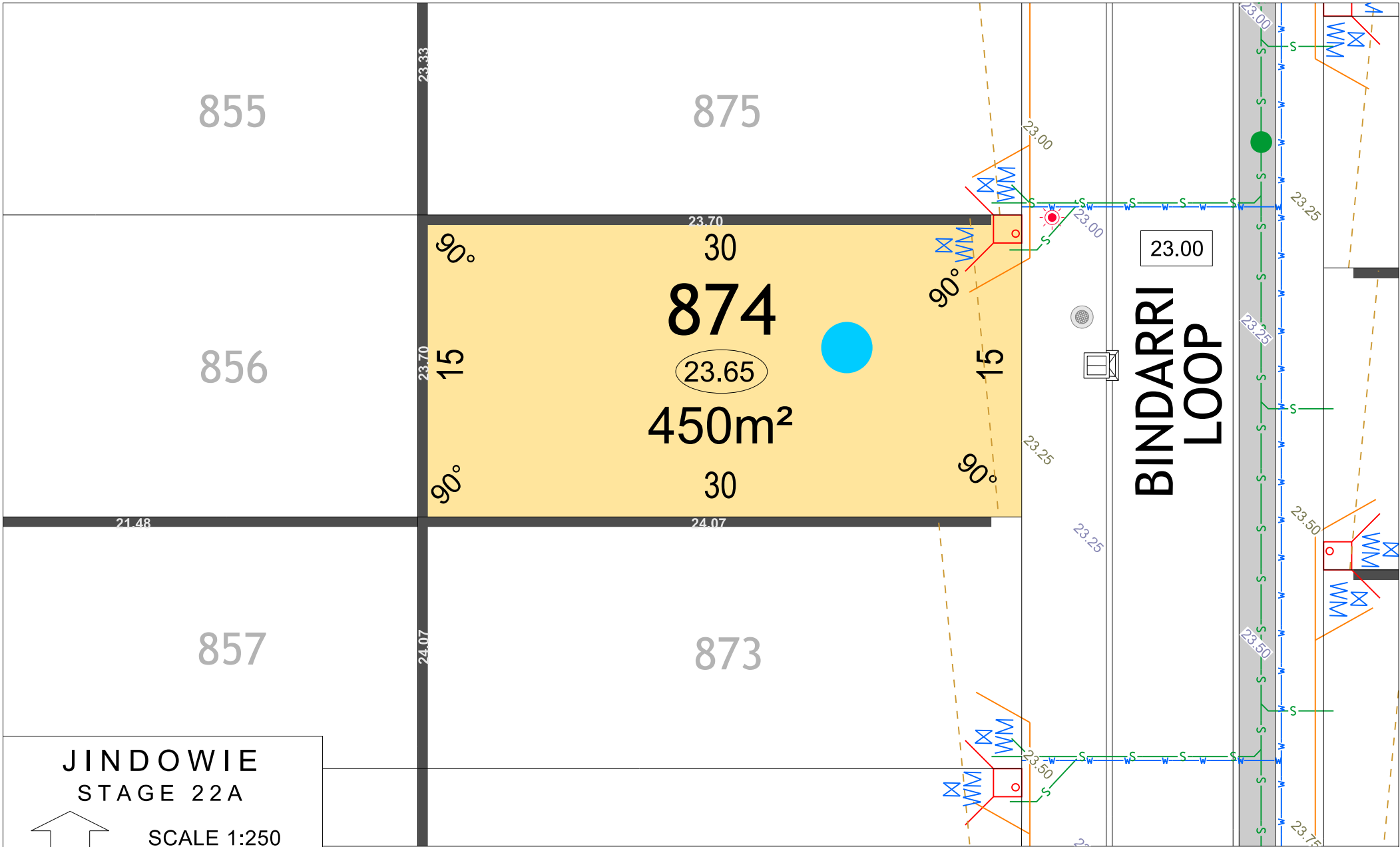
- SEWER / MANHOLE
- DRAINAGE
- DRAINAGE VERGE SWALE
- RETAINING WALL & HEIGHT
- RETAINING WALL & HEIGHT

- POWER DOME MINI PILLAR
- POWER DOME UNIVERSAL PILLAR
- STREETLIGHTS
- PADMOUNT SITE & RESTRICTIVE COVENANT

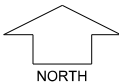
- TOP OF KERB HEIGHT
- SPOT LEVEL
- PAD LEVEL
- ROAD LEVEL
- NOISE PACKAGE A
- NOISE PACKAGE B

- BATTER LINE
- VEHICLE ACCESS RESTRICTION
- 3m WIDE SEWER EASEMENT
- BUSHFIRE ATTACK LEVEL
- BAL 12.5
- BAL 19
- BAL 29
- BAL 40





JINDOWIE
STAGE 22A

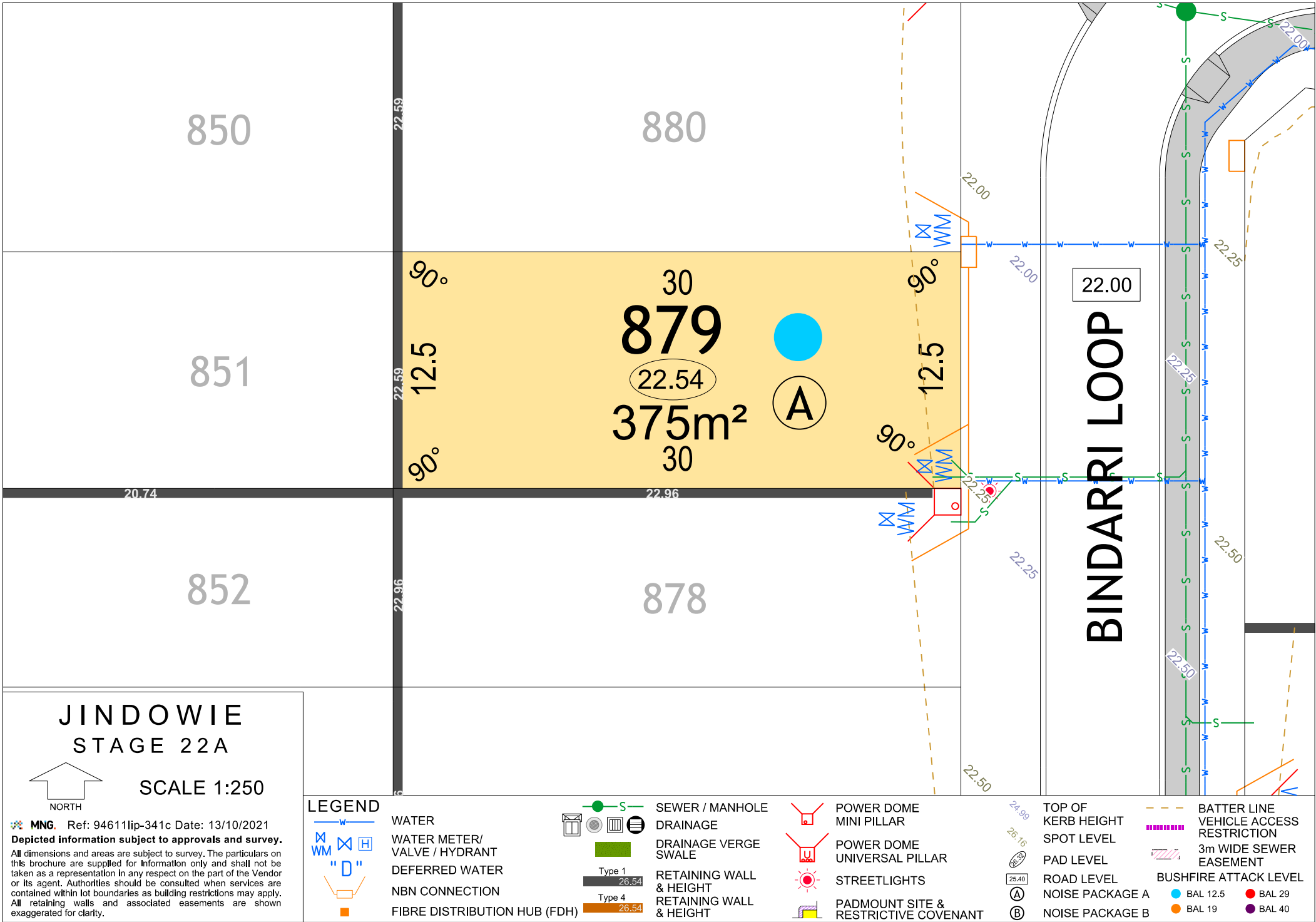


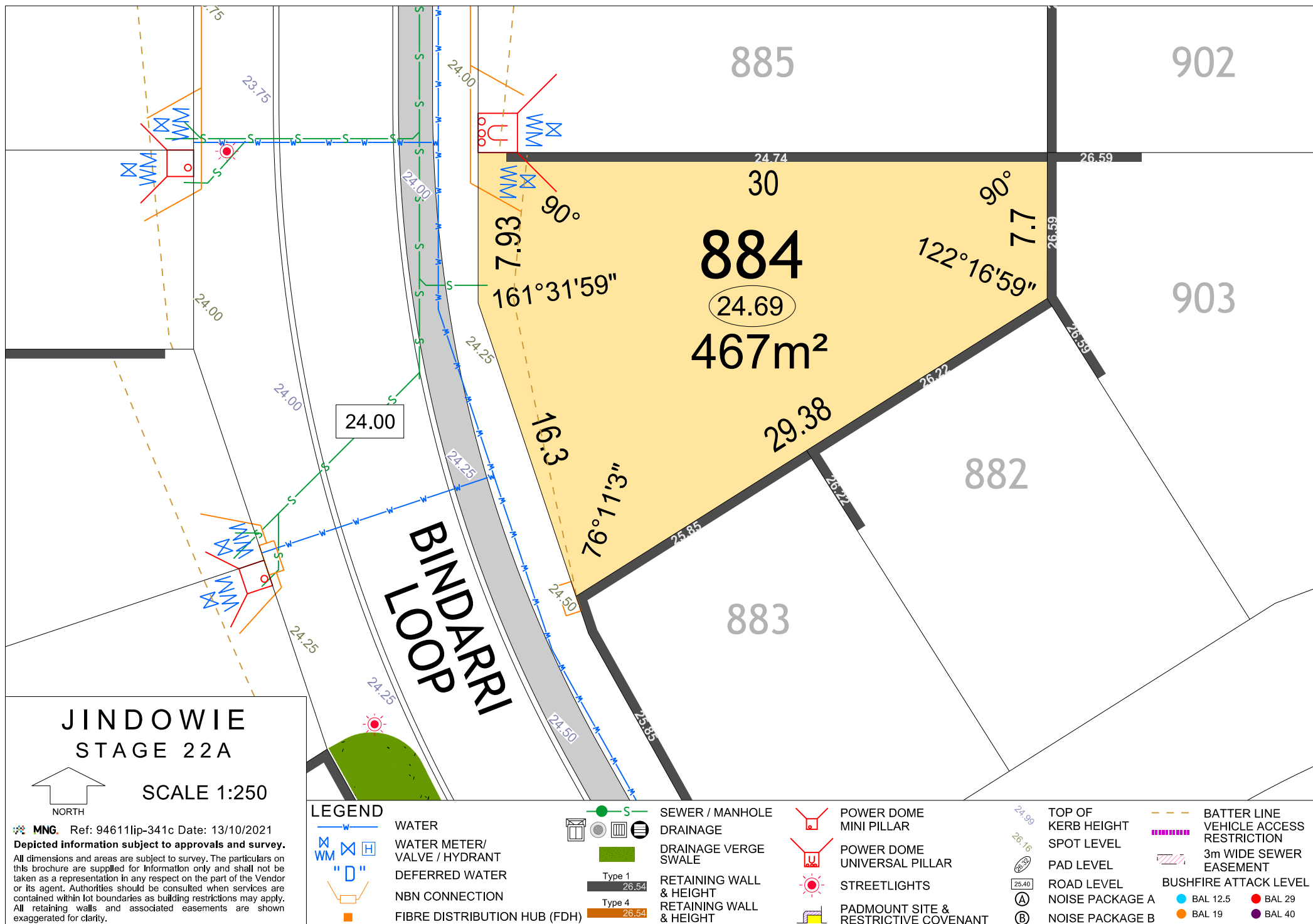
SCALE 1:250

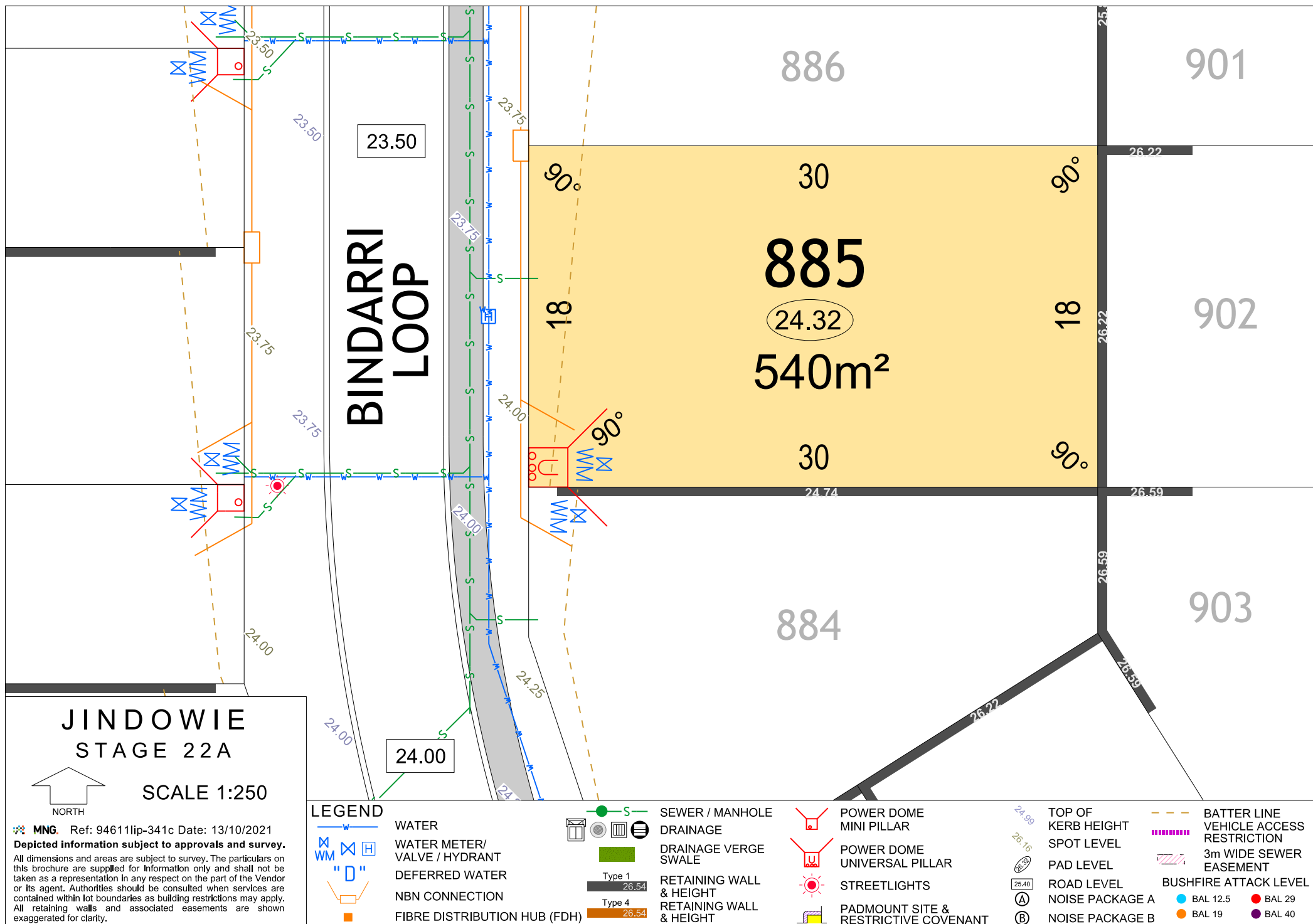
MNG. Ref: 94611ip-341c Date: 13/10/2021
Depicted information subject to approvals and survey.
All dimensions and areas are subject to survey. The particulars on this brochure are supplied for Information only and shall not be taken as a representation in any respect on the part of the Vendor or its agent. Authorities should be consulted when services are contained within lot boundaries as building restrictions may apply. All retaining walls and associated easements are shown exaggerated for clarity.

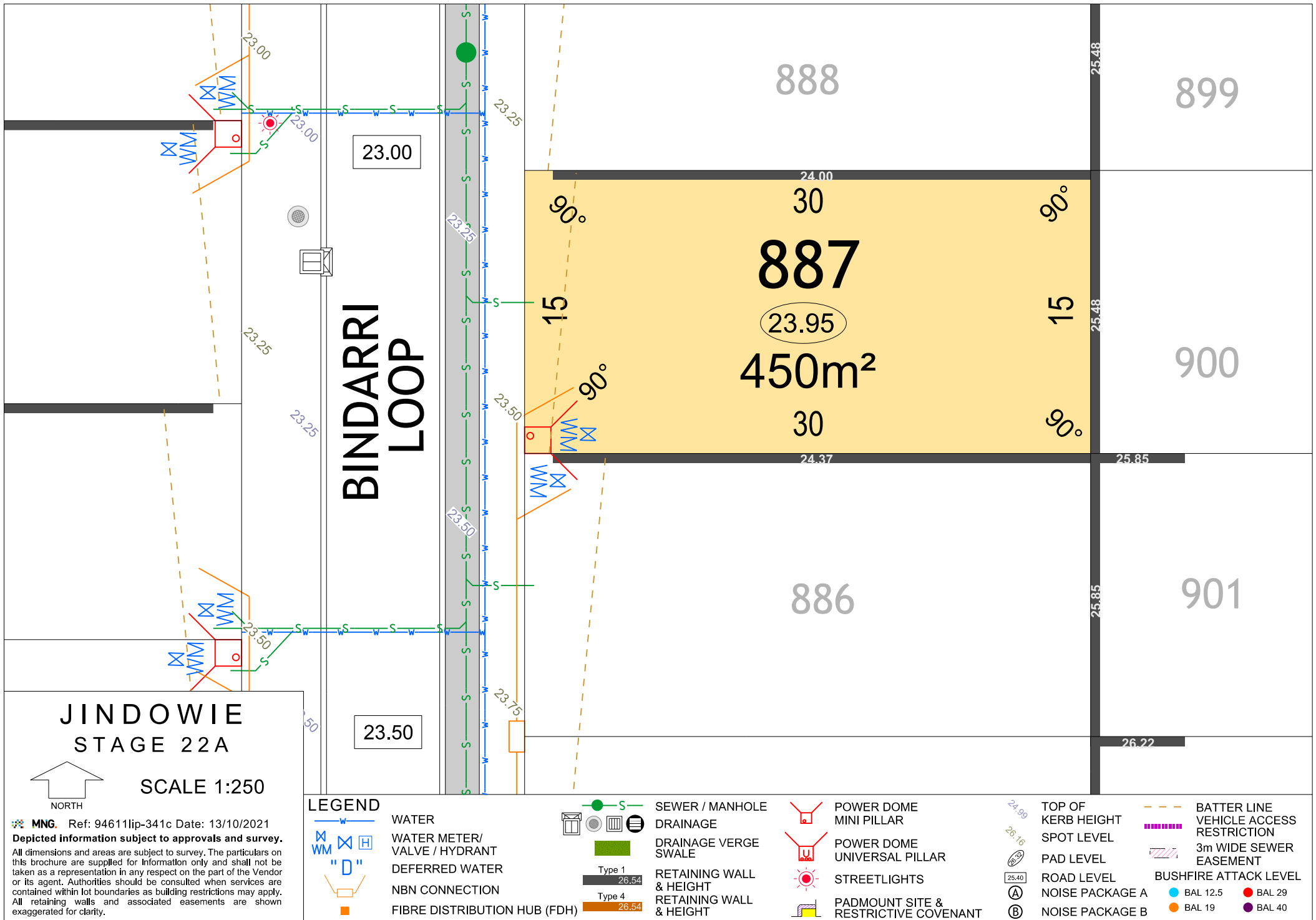
LEGEND

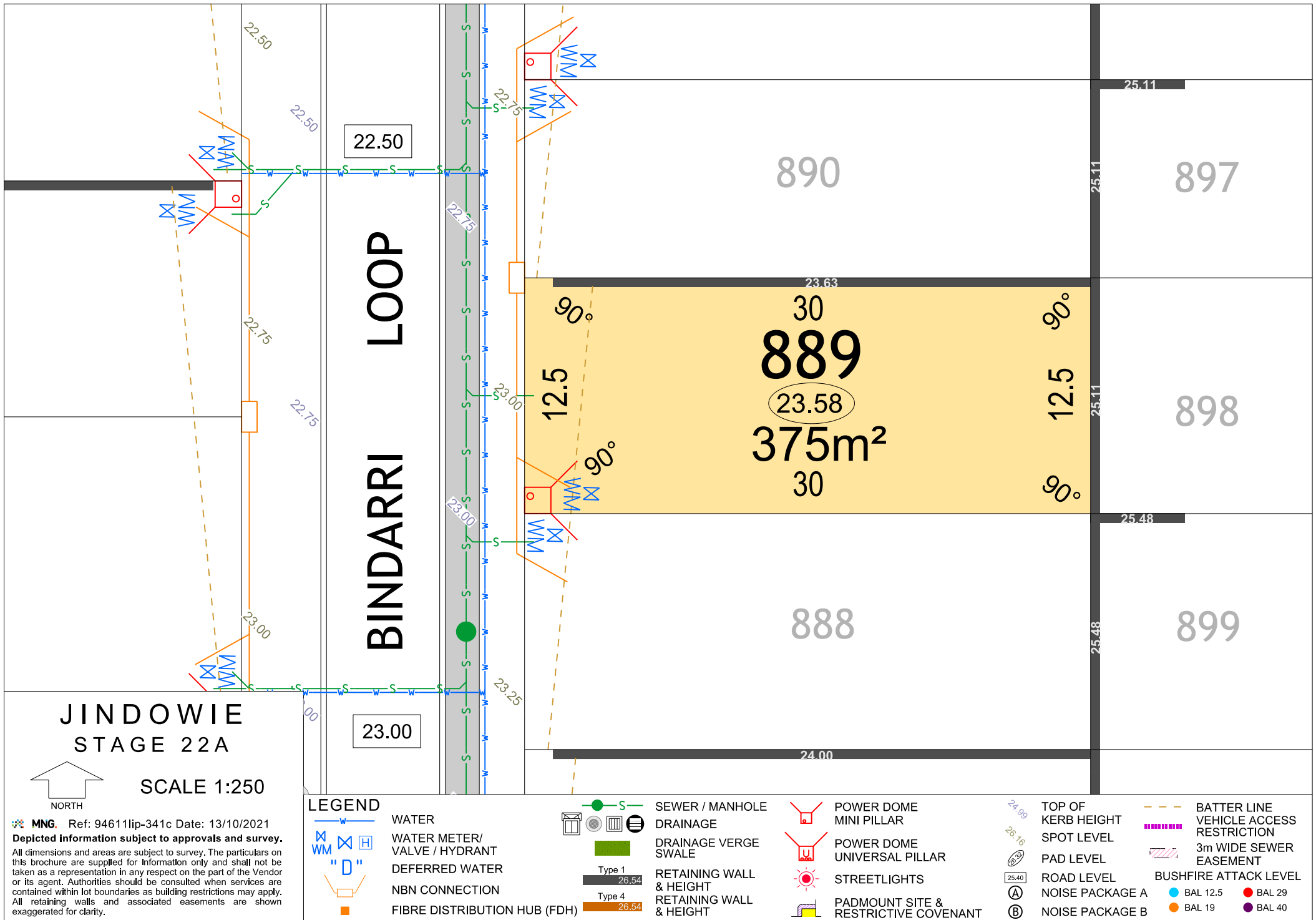
	WATER		SEWER / MANHOLE		POWER DOME MINI PILLAR		TOP OF KERB HEIGHT		BATTER LINE
	WATER METER/ VALVE / HYDRANT		DRAINAGE		POWER DOME UNIVERSAL PILLAR		SPOT LEVEL		VEHICLE ACCESS RESTRICTION
	DEFERRED WATER		DRAINAGE VERGE SWALE		STREETLIGHTS		PAD LEVEL		3m WIDE SEWER EASEMENT
	NBN CONNECTION		RETAINING WALL & HEIGHT		PADMOUNT SITE & RESTRICTIVE COVENANT		ROAD LEVEL		BUSHFIRE ATTACK LEVEL
	FIBRE DISTRIBUTION HUB (FDH)		RETAINING WALL & HEIGHT				NOISE PACKAGE A		BAL 12.5
			RETAINING WALL & HEIGHT				NOISE PACKAGE B		BAL 19
									BAL 40

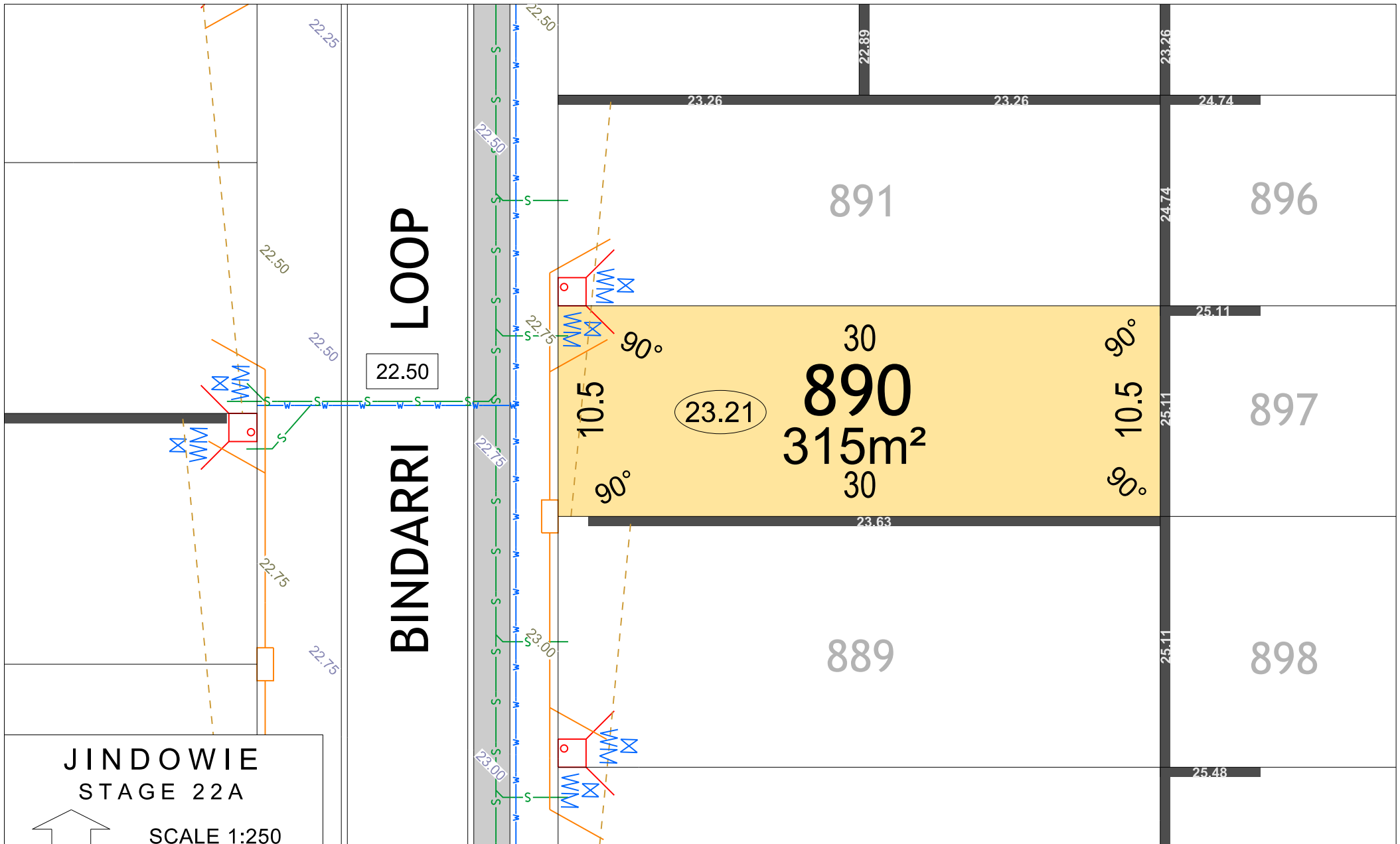












JINDOWIE

STAGE 22A

NORTH

SCALE 1:250

MNG. Ref: 94611ip-341c Date: 13/10/2021

Depicted information subject to approvals and survey.

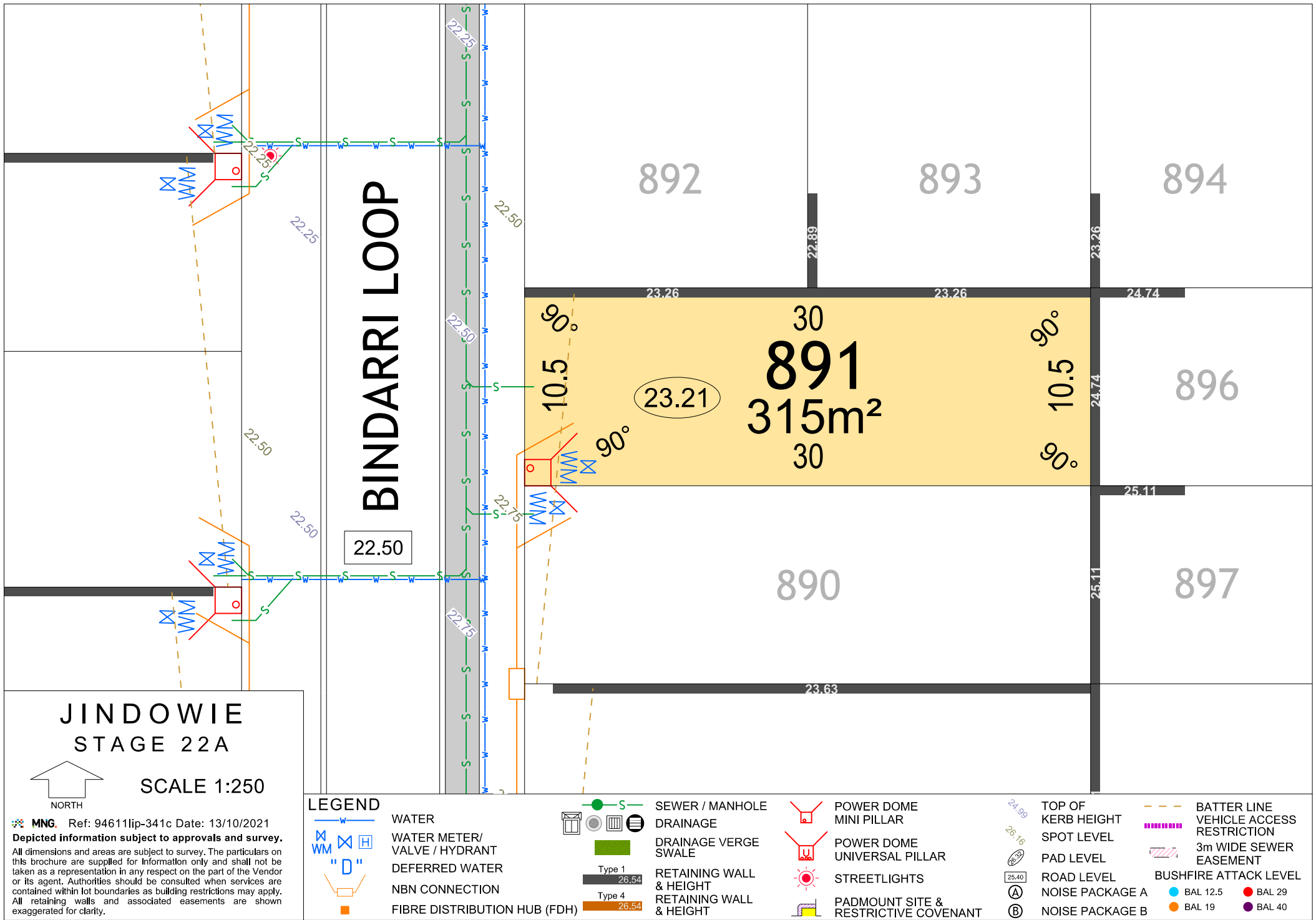
All dimensions and areas are subject to survey. The particulars on this brochure are supplied for Information only and shall not be taken as a representation in any respect on the part of the Vendor or its agent. Authorities should be consulted when services are contained within lot boundaries as building restrictions may apply. All retaining walls and associated easements are shown exaggerated for clarity.

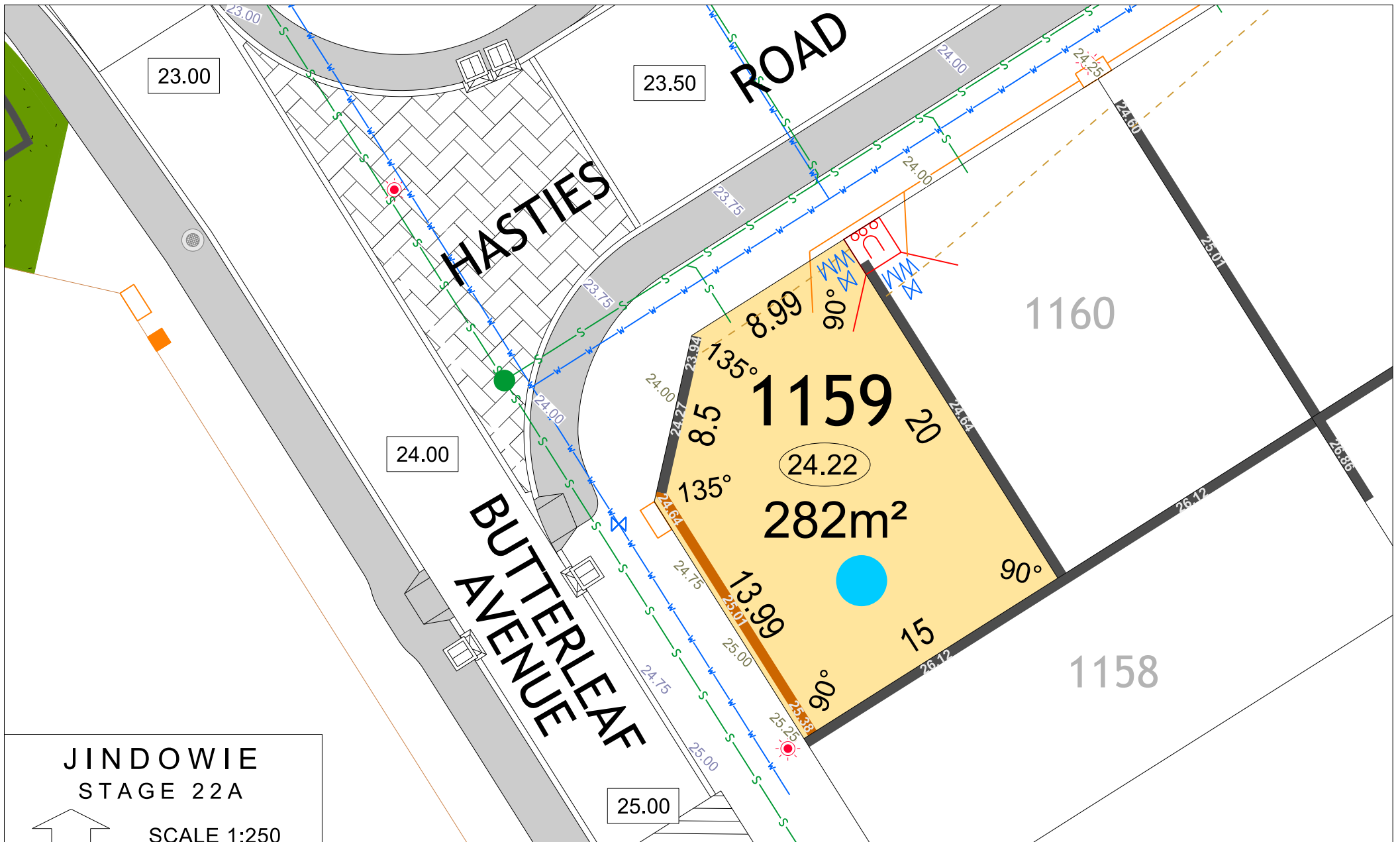
LEGEND

	WATER		SEWER / MANHOLE		POWER DOME MINI PILLAR		BATTER LINE
	WATER METER/ VALVE / HYDRANT		DRAINAGE		POWER DOME UNIVERSAL PILLAR		VEHICLE ACCESS RESTRICTION
	DEFERRED WATER		DRAINAGE VERGE SWALE		STREETLIGHTS		3m WIDE SEWER EASEMENT
	NBN CONNECTION		RETAINING WALL & HEIGHT		PADMOUNT SITE & RESTRICTIVE COVENANT		BUSHFIRE ATTACK LEVEL
	FIBRE DISTRIBUTION HUB (FDH)		RETAINING WALL & HEIGHT				BAL 29

	24.99	TOP OF KERB HEIGHT
	26.16	SPOT LEVEL
	25.40	PAD LEVEL
	(A)	NOISE PACKAGE A
	(B)	NOISE PACKAGE B

	BAL 12.5
	BAL 19
	BAL 29
	BAL 40





JINDOWIE STAGE 22A

SCALE 1:250

MNG. Ref: 94611ip-341c Date: 13/10/2021
Depicted information subject to approvals and survey.
All dimensions and areas are subject to survey. The particulars on this brochure are supplied for Information only and shall not be taken as a representation in any respect on the part of the Vendor or its agent. Authorities should be consulted when services are contained within lot boundaries as building restrictions may apply. All retaining walls and associated easements are shown exaggerated for clarity.

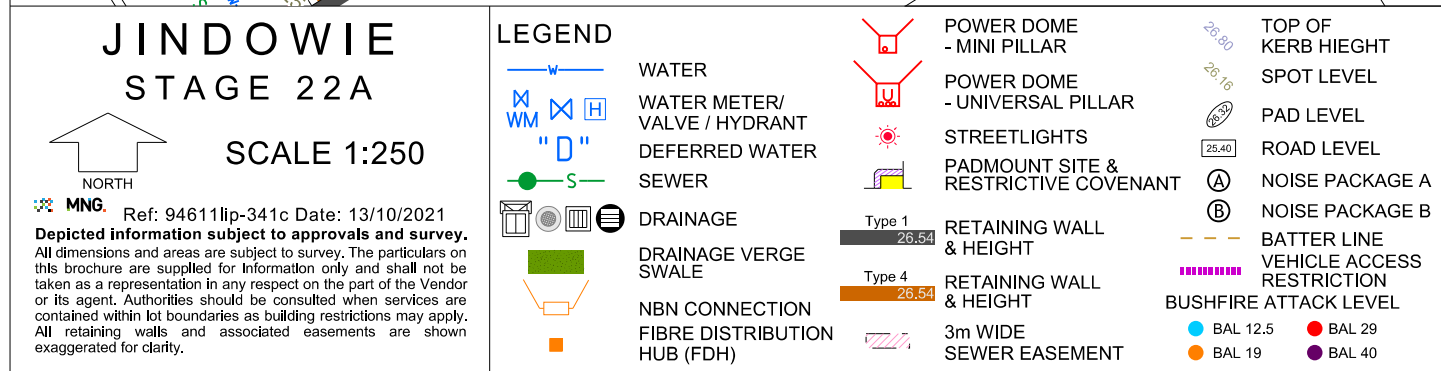
LEGEND

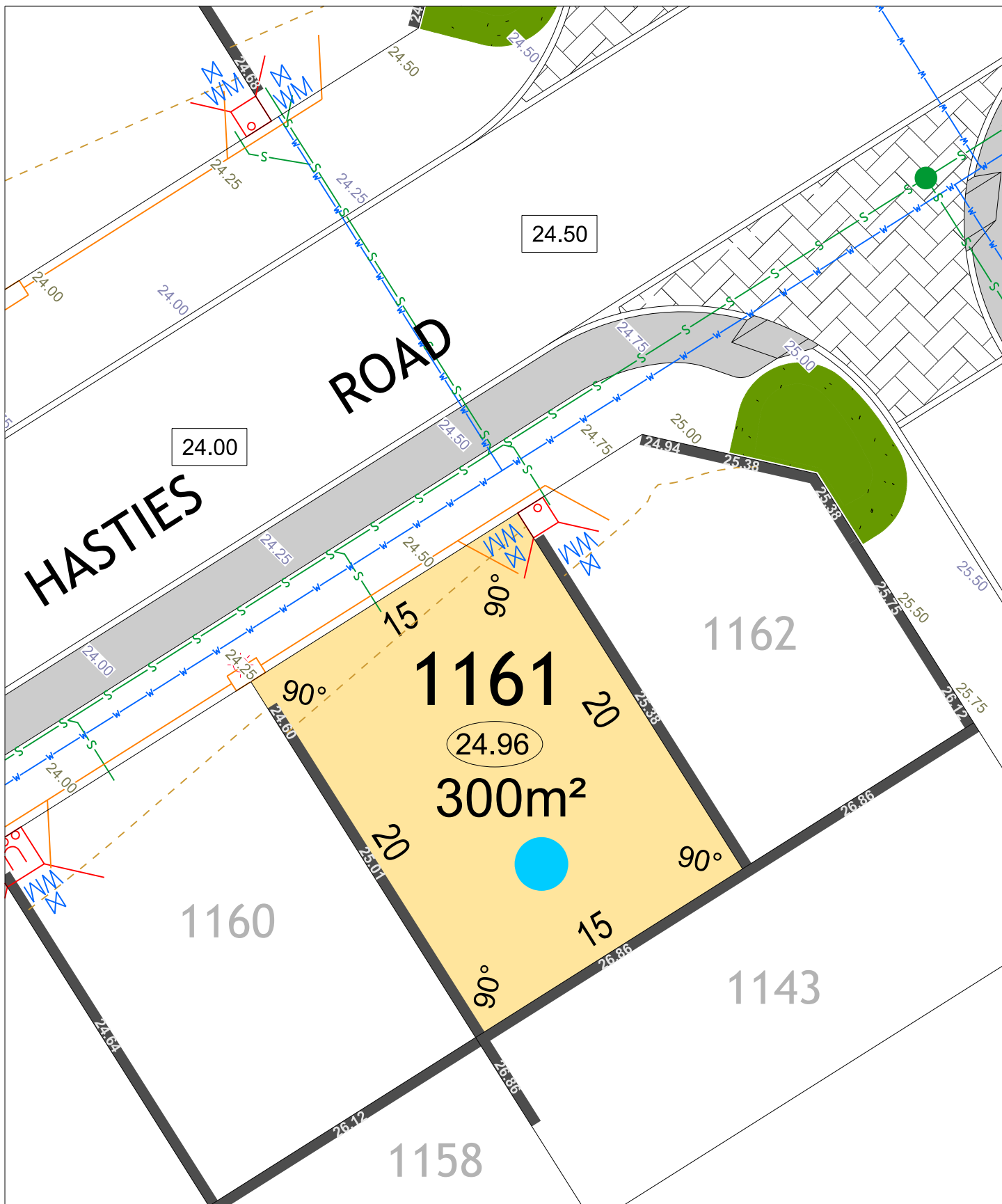
- WATER
- WATER METER/ VALVE / HYDRANT
- DEFERRED WATER
- NBN CONNECTION
- FIBRE DISTRIBUTION HUB (FDH)

- SEWER / MANHOLE
- DRAINAGE
- DRAINAGE VERGE SWALE
- RETAINING WALL & HEIGHT
- RETAINING WALL & HEIGHT

- POWER DOME MINI PILLAR
- POWER DOME UNIVERSAL PILLAR
- STREETLIGHTS
- PADMOUNT SITE & RESTRICTIVE COVENANT

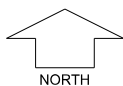
- TOP OF KERB HEIGHT
- SPOT LEVEL
- PAD LEVEL
- ROAD LEVEL
- NOISE PACKAGE A
- NOISE PACKAGE B
- BATTER LINE
- VEHICLE ACCESS RESTRICTION
- 3m WIDE SEWER EASEMENT
- BUSHFIRE ATTACK LEVEL
- BAL 12.5
- BAL 19
- BAL 29
- BAL 40





JINDOWIE STAGE 22A

SCALE 1:250



MNG

Ref: 94611lip-341c Date: 13/10/2021

Depicted information subject to approvals and survey.

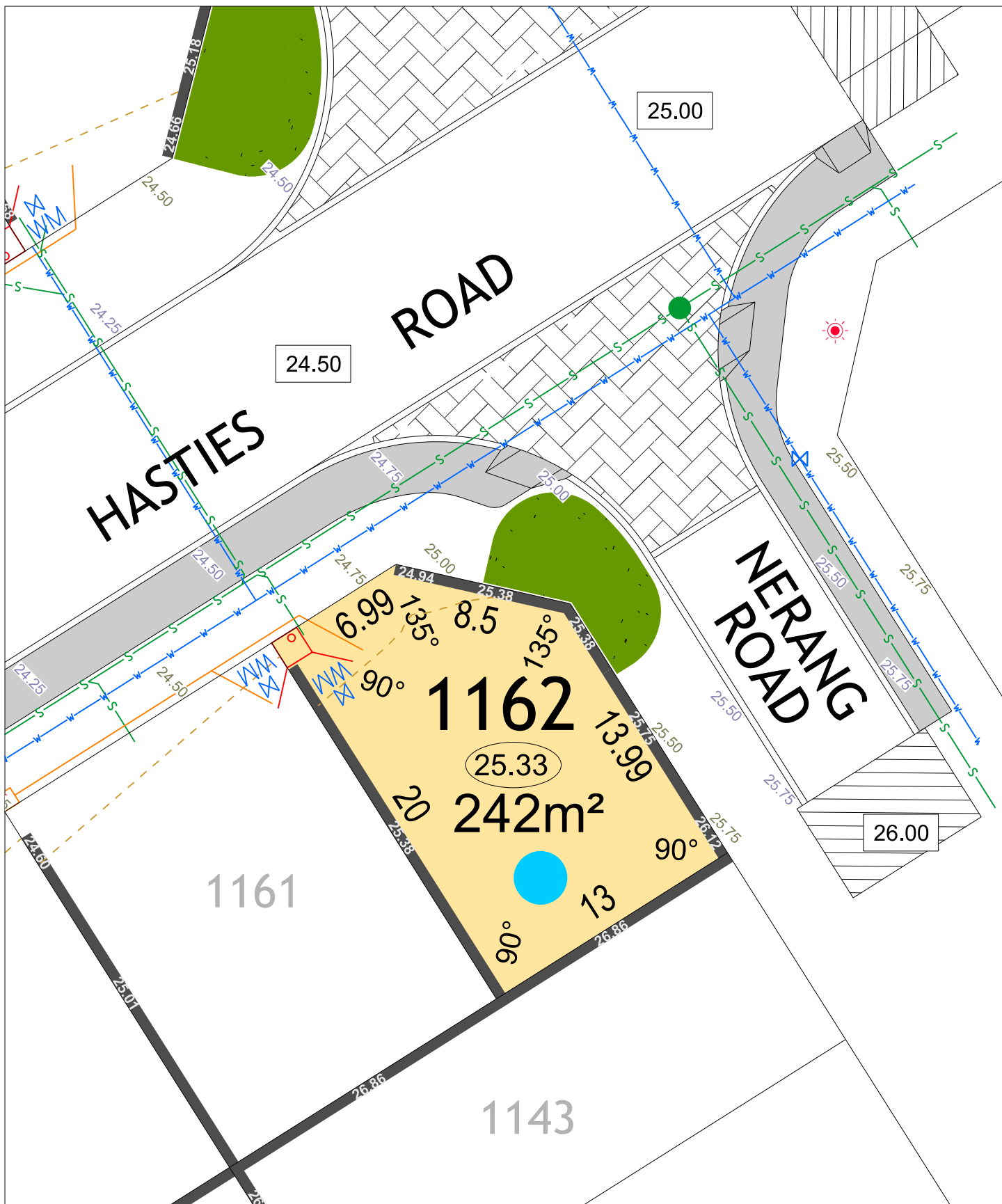
All dimensions and areas are subject to survey. The particulars on this brochure are supplied for Information only and shall not be taken as a representation in any respect on the part of the Vendor or its agent. Authorities should be consulted when services are contained within lot boundaries as building restrictions may apply. All retaining walls and associated easements are shown exaggerated for clarity.

LEGEND

- WATER
- WATER METER/ VALVE / HYDRANT
- DEFERRED WATER
- SEWER
- DRAINAGE
- DRAINAGE VERGE SWALE
- NBN CONNECTION FIBRE DISTRIBUTION HUB (FDH)

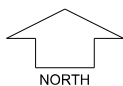
- POWER DOME - MINI PILLAR
- POWER DOME - UNIVERSAL PILLAR
- STREETLIGHTS
- PADMOUNT SITE & RESTRICTIVE COVENANT
- RETAINING WALL & HEIGHT
- RETAINING WALL & HEIGHT
- 3m WIDE SEWER EASEMENT

- TOP OF KERB HIEGHT
- SPOT LEVEL
- PAD LEVEL
- ROAD LEVEL
- NOISE PACKAGE A
- NOISE PACKAGE B
- BATTER LINE
- VEHICLE ACCESS RESTRICTION
- BUSHFIRE ATTACK LEVEL
- BAL 12.5
- BAL 19
- BAL 29
- BAL 40



JINDOWIE STAGE 22A

SCALE 1:250



MNG

Ref: 94611lip-341c Date: 13/10/2021

Depicted information subject to approvals and survey.

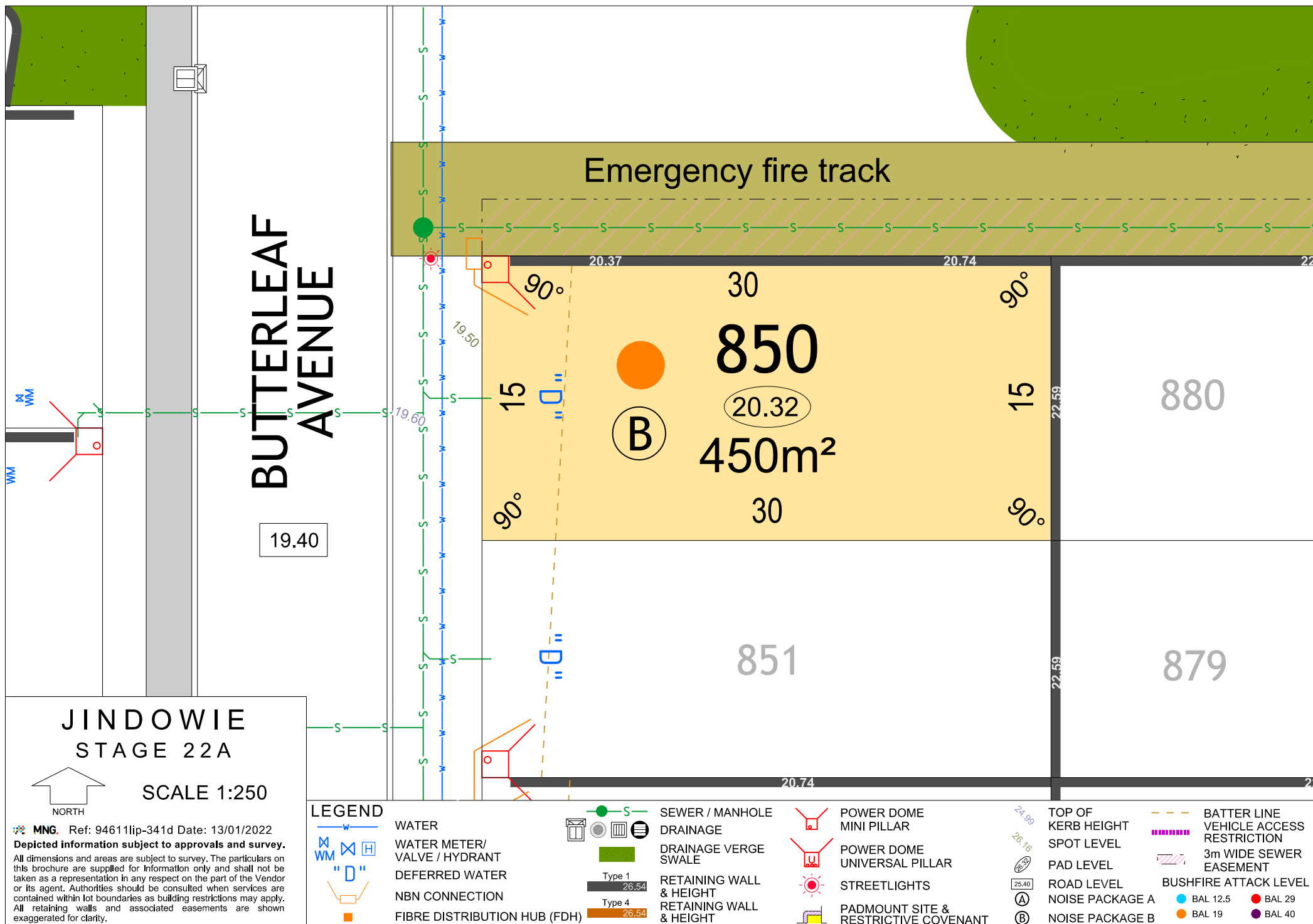
All dimensions and areas are subject to survey. The particulars on this brochure are supplied for Information only and shall not be taken as a representation in any respect on the part of the Vendor or its agent. Authorities should be consulted when services are contained within lot boundaries as building restrictions may apply. All retaining walls and associated easements are shown exaggerated for clarity.

LEGEND

- WATER
- WATER METER/ VALVE / HYDRANT
- DEFERRED WATER
- SEWER
- DRAINAGE
- DRAINAGE VERGE SWALE
- NBN CONNECTION
- FIBRE DISTRIBUTION HUB (FDH)

- POWER DOME - MINI PILLAR
- POWER DOME - UNIVERSAL PILLAR
- STREETLIGHTS
- PADMOUNT SITE & RESTRICTIVE COVENANT
- RETAINING WALL & HEIGHT 26.54
- RETAINING WALL & HEIGHT 26.54
- 3m WIDE SEWER EASEMENT

- TOP OF KERB HIEGT
- SPOT LEVEL
- PAD LEVEL
- ROAD LEVEL
- NOISE PACKAGE A
- NOISE PACKAGE B
- BATTER LINE
- VEHICLE ACCESS RESTRICTION
- BUSHFIRE ATTACK LEVEL
- BAL 12.5
- BAL 19
- BAL 29
- BAL 40



Emergency fire track

850

880

450m²

B

851

879

LOOP

BINDARRI

JINDOWIE
STAGE 22A

SCALE 1:250



MNG. Ref: 94611lip-341d Date: 13/01/2022
Depicted information subject to approvals and survey.
All dimensions and areas are subject to survey. The particulars on this brochure are supplied for Information only and shall not be taken as a representation in any respect on the part of the Vendor or its agent. Authorities should be consulted when services are contained within lot boundaries as building restrictions may apply. All retaining walls and associated easements are shown exaggerated for clarity.

LEGEND

- | | | | | | | | | | |
|--|-------------------------------|--|-------------------------|--|--------------------------------------|--|--------------------|--|----------------------------|
| | WATER | | SEWER / MANHOLE | | POWER DOME MINI PILLAR | | TOP OF KERB HEIGHT | | BATTER LINE |
| | WATER METER / VALVE / HYDRANT | | DRAINAGE | | POWER DOME UNIVERSAL PILLAR | | SPOT LEVEL | | VEHICLE ACCESS RESTRICTION |
| | DEFERRED WATER | | DRAINAGE VERGE SWALE | | STREETLIGHTS | | PAD LEVEL | | 3m WIDE SEWER EASEMENT |
| | NBN CONNECTION | | RETAINING WALL & HEIGHT | | PADMOUNT SITE & RESTRICTIVE COVENANT | | NOISE PACKAGE A | | BUSHFIRE ATTACK LEVEL |
| | FIBRE DISTRIBUTION HUB (FDH) | | RETAINING WALL & HEIGHT | | | | NOISE PACKAGE B | | |